

Science Year 4 ONLINE EXAM

SCIENCE 2

SR.Serasa

Make sure you type the correct spelling.
Wrong spelling will give you 0 mark.

SECTION A [60 MARKS]

1. Match the statements in **Column A** with the correct words in **Column C**.

Type the answers in **Column B**.

	Column A	Column B	Column C
(a)	These are special parts of our body that help us sense the world around us.		thermometer
(b)	This is a material made from a type of soil called clay.		sense organs
(c)	This is a form of energy we can hear.		water
(d)	An instrument used to measure temperature.		sound
(e)	This comes from plants. It helps to move food through the digestive system.		roughage
			heat
			ceramic

2. Read the statements below. Indicate whether each statement is **TRUE** or **FALSE**.

- (a) Plants use the energy in sunlight to make food. _____
- (b) The boiling point of water is 0°C. _____
- (c) Substances that dissolve in water are soluble. _____
- (d) Living things get their energy from food. _____
- (e) You should exercise for at least twice a month. _____

3. Fill in the blanks and complete the sentences below. Use the words given.

hardness	metals	movement	poor
good	stored	flexibility	strength

- (a) _____ are materials that come from under the ground.
- (b) The _____ of a material is how much it can be pulled apart or pressed together without breaking.
- (c) _____ is how easily a material can be scratched or dented.
- (d) _____ is how much a material can be bent without breaking.
- (e) _____ energy is energy that is stored in an object and can be used another time.
- (f) _____ energy is the energy an object possesses when it is moving.
- (g) A material that allows heat to flow through it easily is a _____ conductor of heat.
- (h) A material that does not allow heat to flow through it easily is a _____ conductor of heat.

4. **Classifying** living things.

(a) Classify the plants below as **flowering plants** and **non-flowering plants** in the table provided.



Orchid plant



Pine tree



Lily plant



Bird's nest plant



Hibiscus plant

Flowering plants	Non-flowering plants
<hr/>	<hr/>
<hr/>	<hr/>
<hr/>	<hr/>

(b) Classify the animals below as **animals with backbones** and **animals without backbones** in the table provided.



Rabbit



Kingfisher



Scorpion



Bee

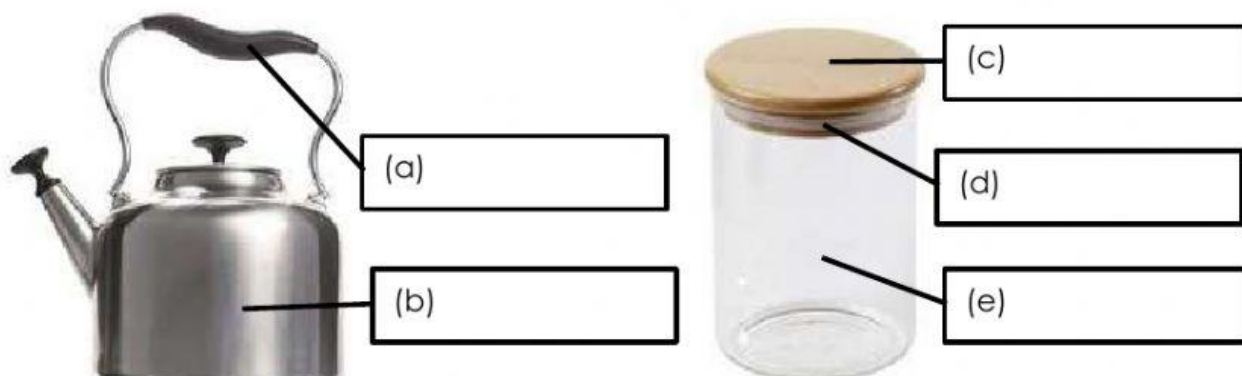


Turtle

Animals with backbones	Animals without backbones
<hr/>	<hr/>
<hr/>	<hr/>
<hr/>	<hr/>

5. Identify the **materials** used to make the objects below.

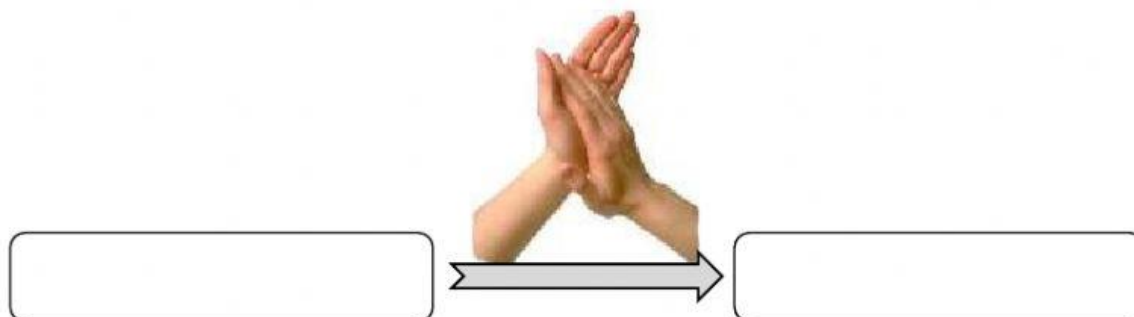
rubber	metal	wood	glass	plastic
--------	-------	------	-------	---------



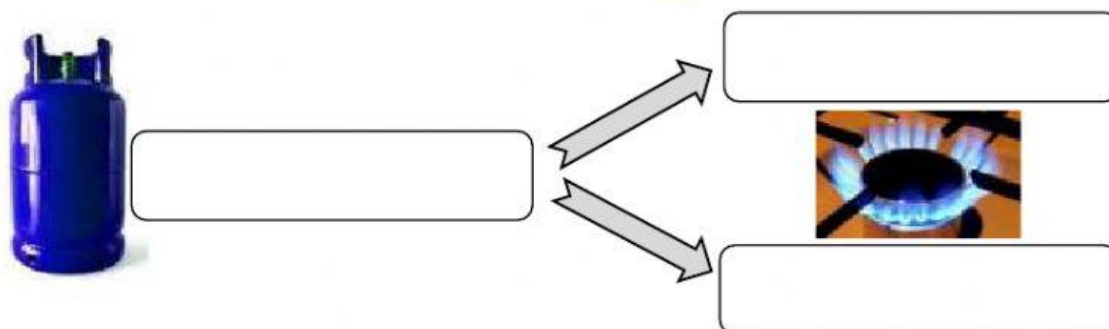
6. Identify the **energy conversions** below. Use the words given.

Light energy	Sound energy	Stored energy	Movement energy	Heat energy
--------------	--------------	---------------	-----------------	-------------

(a) What energy conversion takes place when you **clap your hands**?

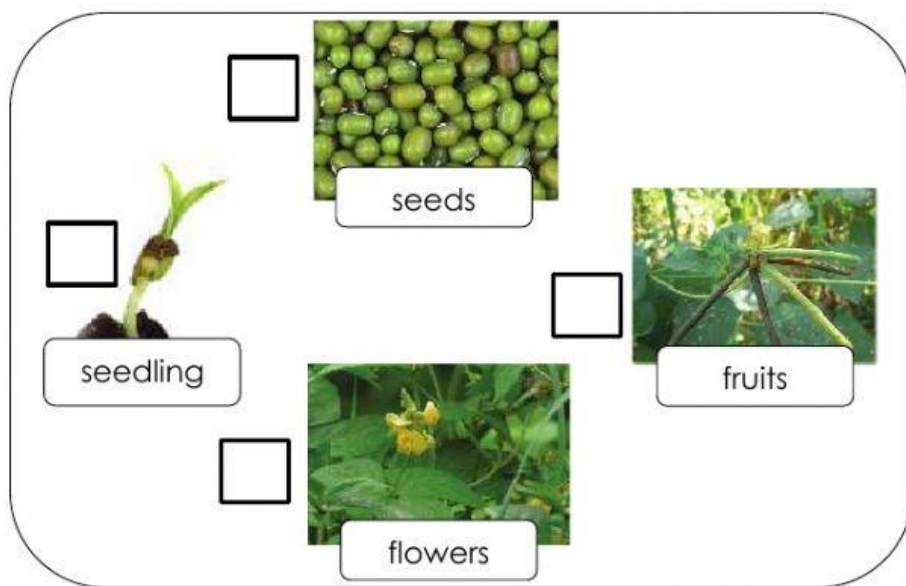


(b) What energy conversion takes place when a **gas burner is lit**?



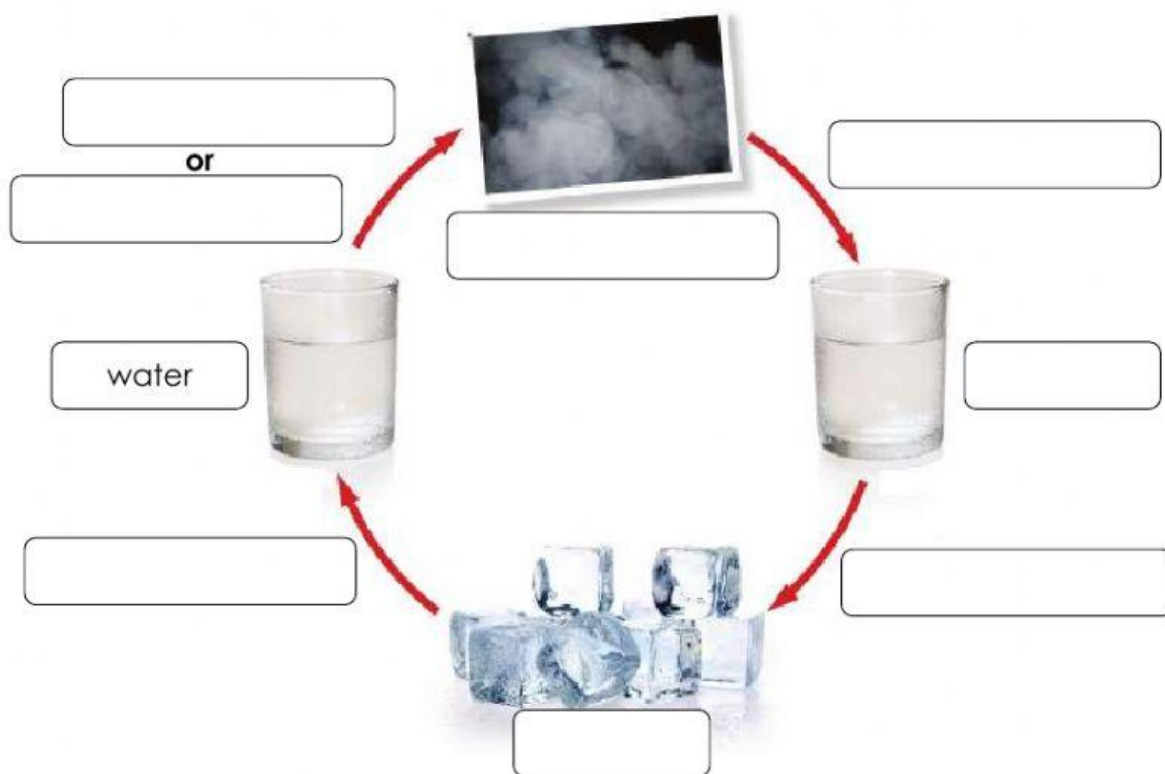
7. Complete the **cycles** below.

(a) Put number **1, 2, 3** and **4** in the boxes provided based on its **lifecycle**.



(b) Use the words below to label the diagram.

water vapour	melting	water	evaporation
ice	condensation	boiling	freezing



8. Label the different **types of food** below.

vitamin	carbohydrate	mineral	protein	fat
---------	--------------	---------	---------	-----



butter



meat



green vegetables



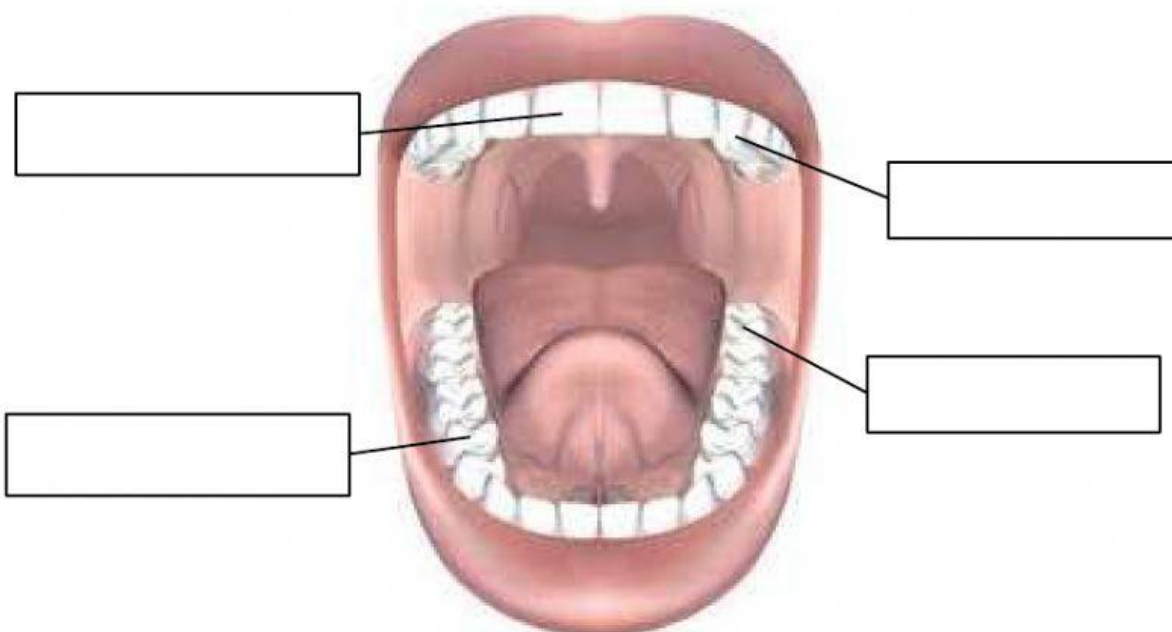
bread



milk, eggs and cheese

9. (a) Label the **different types of teeth**. Use the words below.

premolar	incisor	molar	canine
----------	---------	-------	--------

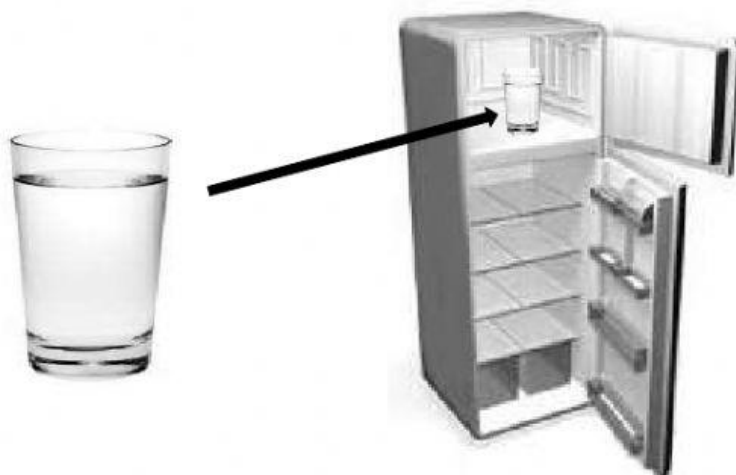


(b) What type of teeth is used to bite and cut food? _____.

SECTION B: OPEN-ENDED QUESTIONS

Click the **correct** answer.

Syazani placed a glass of water in a freezer for one day.



(a) What **happened** to the water in the glass after one day?

The water freeze and change into a solid state

The water still in a liquid state

(b) What was the **process** when the changing state of water happened?

The water is freezing

The water is melting

(c) What is the **temperature** at which water changes from a **liquid to a solid**?

100°

0°

(d) What will happen if the glass from the freezer is put out under the Sun for two hours?

The ice will freeze

The ice will melt

END OF PAPER