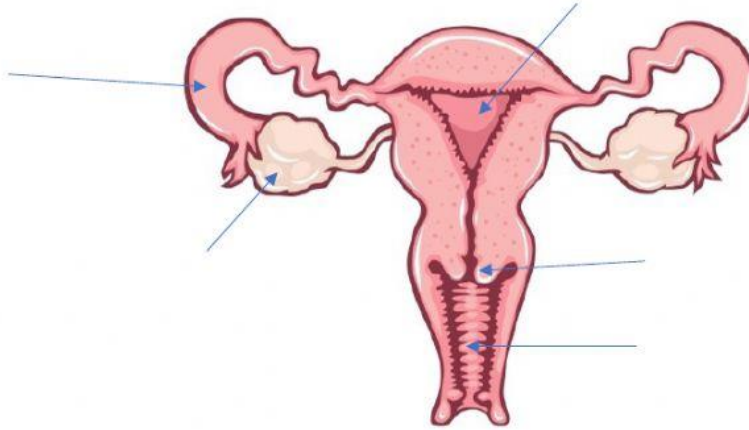


Name: _____

Date: _____

The Female Reproductive System

Label the diagram of the female reproductive system.



Match the function to the correct part of the female reproductive system.

Ovary

accommodates and protects
the embryo

Oviduct (fallopian tube)

connects the uterus with
the vagina and produces
mucus for sperm movement

Vagina

channels ovum from the
ovary to the uterus and the
place where fertilization

Cervix

produces ovum

Uterus

passage way for menstrual
cycle, receives sperm from
the penis, produces fluid
for lubrication and is also
the birth canal