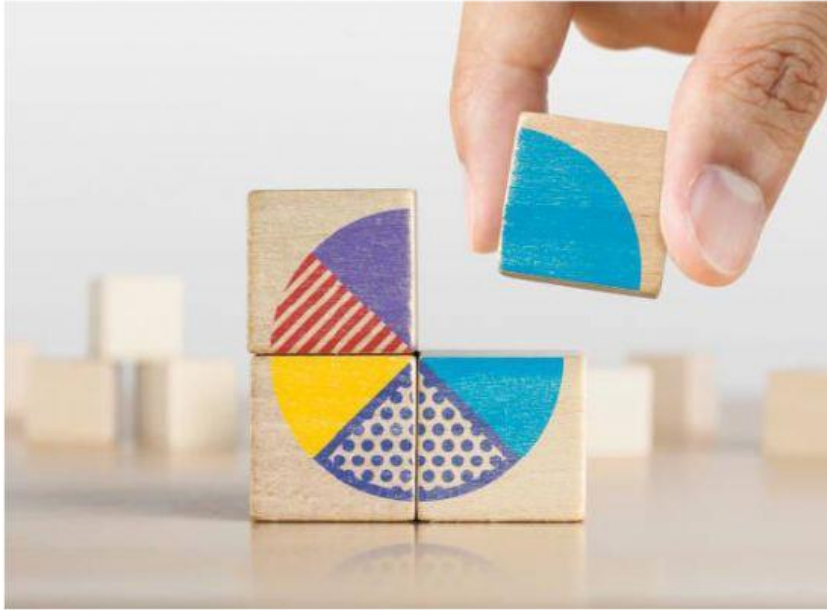


Suma de fracciones homogéneas



Parea con el total correcto.

$$\frac{9}{43} + \frac{12}{43} = \frac{43}{43}$$

$$\frac{12}{43} + \frac{14}{43} = \frac{21}{43}$$

$$\frac{27}{43} + \frac{19}{43} = \frac{46}{43}$$

$$\frac{34}{43} + \frac{9}{43} = \frac{26}{43}$$

Escuela Carmen Gómez Tejera
Biblioteca Escolar

$$\frac{81}{145}$$

+

$$\frac{31}{145}$$

$$\frac{33}{145}$$

$$\frac{56}{145}$$

+

$$\frac{27}{145}$$

$$\frac{83}{145}$$

$$\frac{29}{145}$$

+

$$\frac{29}{145}$$

$$\frac{112}{145}$$

$$\frac{15}{145}$$

+

$$\frac{18}{145}$$

$$\frac{140}{145}$$

$$\frac{121}{145}$$

+

$$\frac{19}{145}$$

$$\frac{58}{145}$$

$$\frac{62}{145}$$

+

$$\frac{38}{145}$$

$$\frac{100}{145}$$