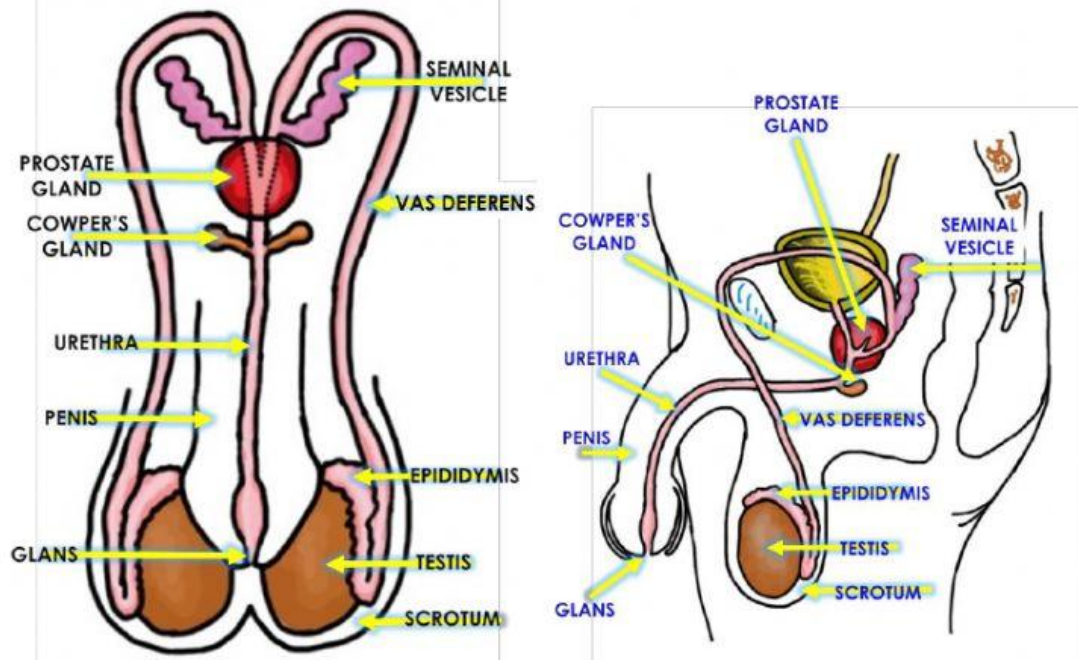


GROUP 1: GUESS ME!

Study the illustration of the male reproductive system below, then identify the parts being described.



ORGAN	DESCRIPTION/FUNCTION
	This is a pair of pouch-like sacs that serves as skin covering of the testes. It controls its temperature because the testes must be slightly cooler than the body to produce sperm cells.
	It is a pair of spherical glands located in a pouch. These are the glands that produce sperm cells and male sex hormones called testosterone. It is the main organ of the male reproductive system.
	It is a narrow-coiled tube that stores immature sperm cells until they mature and where they are temporarily stored before their release.
	It is a long, muscular tube that connects the testes to the seminal vesicle and urethra. It serves as passageway of the sperm cells released from the testes.
	These are sac-like pouches attached to the Vas Deferens. It produces a sugar-rich fluid that provides energy to sperm cells' motility.
	It is walnut-sized gland located between the bladder and the penis. It secretes fluid that nourishes and protects the sperm.
	It is also called as the Bulbourethral Gland, one of the two pea-sized organs found beneath the prostate gland. It is responsible in releasing fluid that flushes out foreign matter and neutralizes the acidic urine in the urethra.
	It is the passageway of both urine from the urinary bladder and semen from the glands.
	It is the external male organ with a tip called glans. It is covered with foreskin that may be removed through circumcision and acts as a conduit for urine to leave the body.
	It is the tip of a penis.



DOÑA ROSARIO ELEMENTARY SCHOOL

Address: #673 Panday Pira St. Doña Rosario Subd. Barangay Nova Proper, Quezon City

Telephone Number: 77911645

e-Mail Address: dres_es@yahoo.com