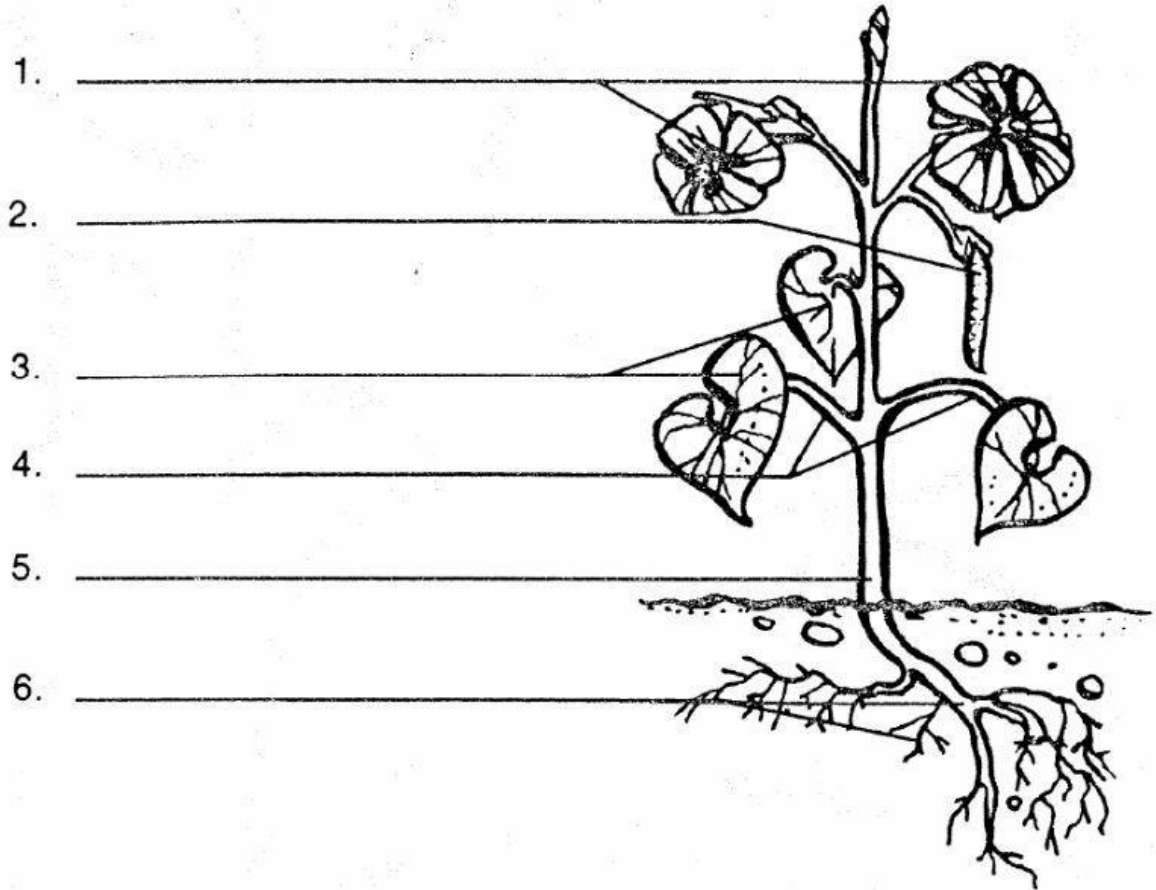


Parts of a Plant

Read the story then label the parts of the plant.



A plant has **roots** which keep it in the ground. The roots also take in water and minerals from the soil.

Above the ground is the **main stem**. It holds up the plant and carries water throughout the plant.

Secondary stems , or **petioles**, grow from the main stem. These stems have the **leaves**. Green leaves make most of the plants food.

The **flowers** of the plant produce **fruit**. Inside the fruit are the **seeds**. The seeds produce new plants.

Plant Facts

Circle the letter in the correct column for each statement.

	True	False
1. Plants have three parts: the root, the stem, and the carbon dioxide.	H	Y
2. Plants can live without water.	I	O
3. Roots hold a plant in the ground.	U	L
4. Plants and animals produce their own food.	O	H
5. Stems carry water from the roots to the leaves.	A	G
6. Food is make in the leaves of green plants.	V	F
7. All leaves look alike.	R	E
8. Green plants need sunlight.	E	C
9. All plants have chlorophyll.	S	A
10. Seeds store food.	R	S
11. Flowering plants produce fruit.	S	D

What do you have that a corn plant has?

To find out, fill in the letters you circled above on the lines of the question numbers below.

 1 2 3 4 5 6 7 8 9 10 11



Plant Parts Review

Circle the correct answer.

1. A plant has roots which keep it
 - a) in the ground
 - b) living
 - c) from getting cold

2. The main stem above the ground helps
 - a) the bugs bring food
 - b) the flowers bloom
 - c) carry water throughout the plant

3. The secondary stems grow out from the main stem, and these stems have
 - a) thistles
 - b) flowers
 - c) leaves

4. Green leaves make most of the plant's
 - a) chlorophyll
 - b) food
 - c) seeds

5. The flowers of the plant produce
 - a) seeds
 - b) fruit
 - c) leaves

6. Roots and stems carry
 - a) sunlight and sugar
 - b) nutrients and water
 - c) carbon dioxide and sugar

7. Photosynthesis takes place in the
 - a) root
 - b) leaves
 - c) stem