

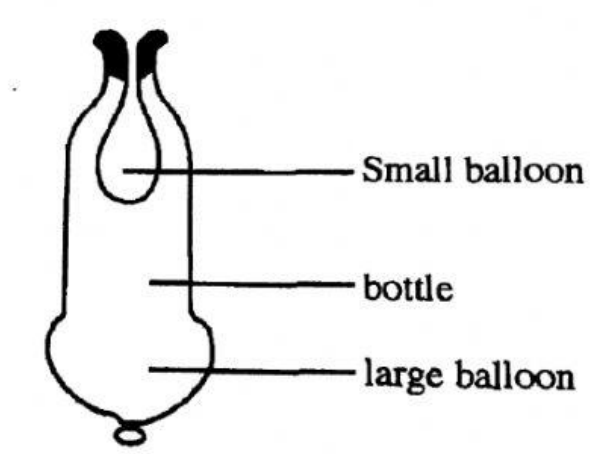
Name: \_\_\_\_\_

# Biology

## Respiratory System Review Worksheet #2

**Instruction:** Answer the following questions in the spaces provided.

1. The diagram shows a model of the human respiratory system.



When a large balloon is pulled downwards, the small balloon inflates.

a. What part of the respiratory system is represented by the: [3]

i. small balloon? \_\_\_\_\_

ii. bottle? \_\_\_\_\_

iii. large balloon? \_\_\_\_\_

b. Explain how the intercostal and diaphragm muscles help to enlarge the thorax during inspiration. [4]

---

---

---

---

- c. State **TWO** ways that the trachea of a human is adapted for removing dust particles from the air as it moves towards the lungs. [2]

---

---

- d. Explain the difference between breathing and respiration. [2]

---

---

---

- e. Complete the table below with the missing information: [3]

Name of Gas	Inspiration	Expiration
Oxygen		16%
Carbon dioxide	0.04%	
Nitrogen	78%	78%
Water vapour		more