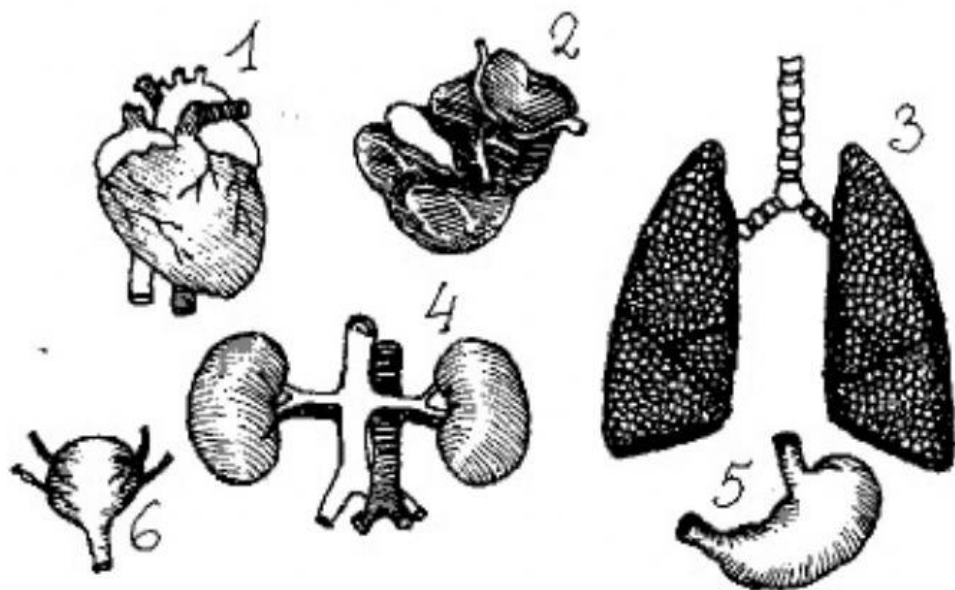


BODY. Choose the correct answer.

1. The PUPIL is part of the
a) ear b) stomach c) eye d) hand
2. The SOLE is part of the
a) hand b) foot c) eye d) ear
3. The CALF is part of the
a) leg b) arm c) chest d) head
4. The WRIST is part of the
a) hand b) foot c) eye d) ear
5. The IRIS is part of the
a) hand b) foot c) eye d) ear
6. The HEEL is part of the
a) hand b) foot c) eye d) breast
7. The PALM is part of the
a) hand b) foot c) ear d) breast
8. The NIPPLE is part of the
a) hand b) foot c) ear d) breast
9. The THUMB is part of the
a) hand b) foot c) head d) chest
10. The SHIN is part of the
a) arm b) leg c) head d) breast

BODY. Give names of the bodily organs indicated in the picture below.



1. 2. 3. 4. 5. 6.