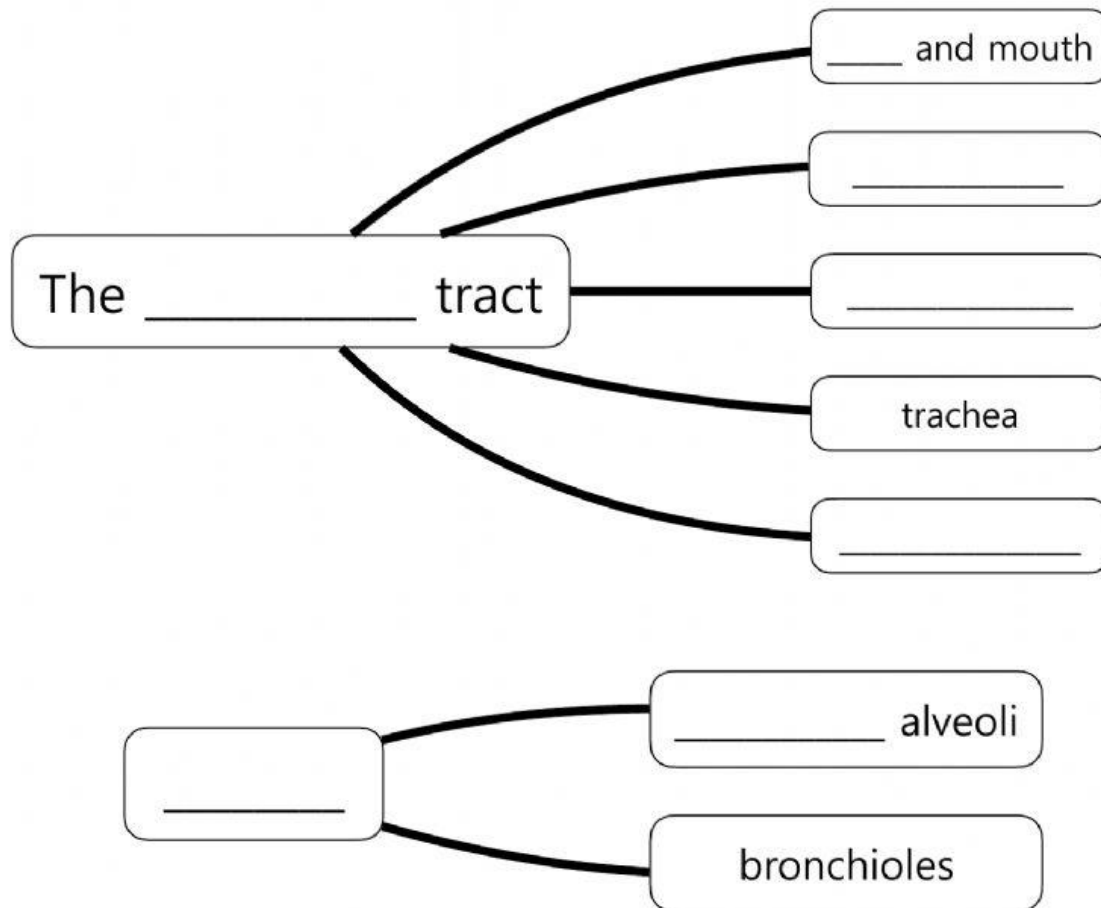
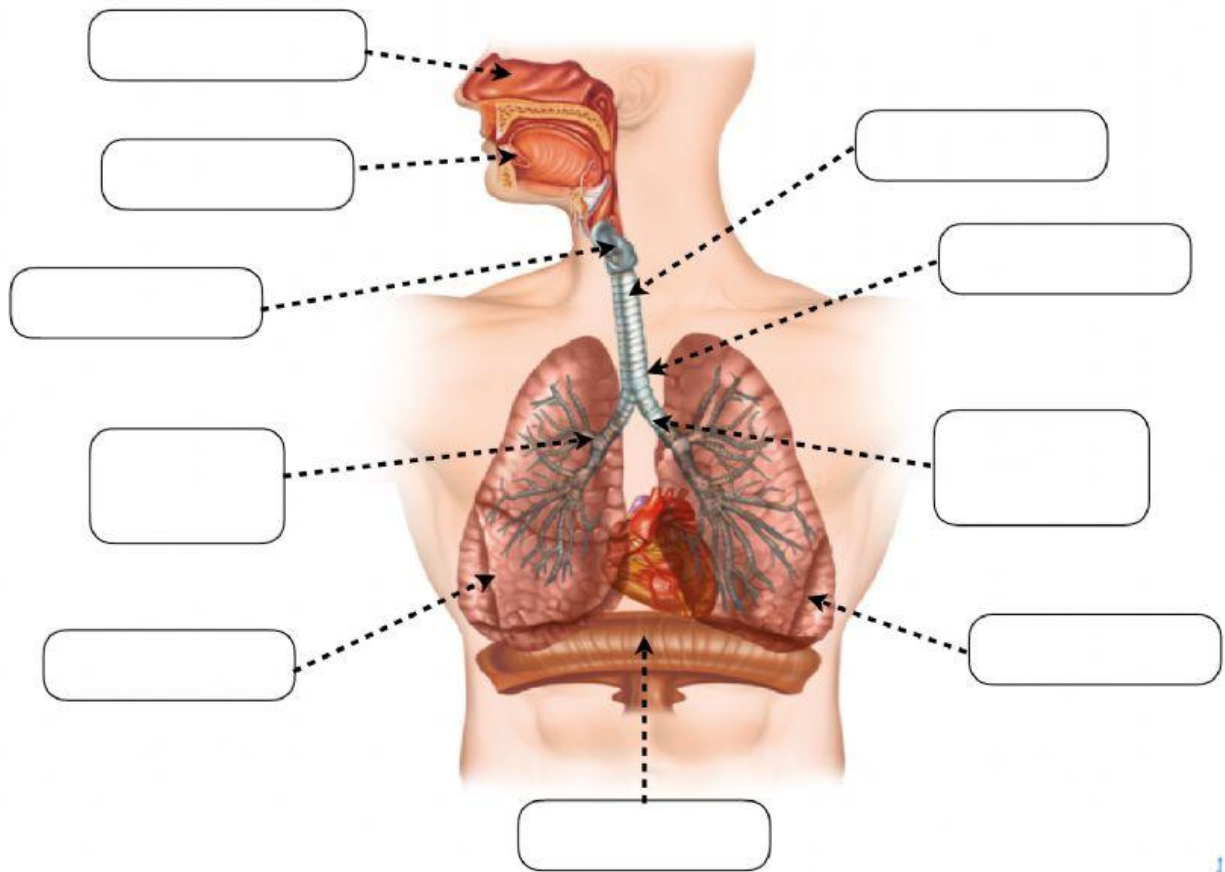


Complete the concept map about the respiratory system:



Complete the picture with the parts of the respiratory system:



Match the parts of the respiratory system to their definitions:

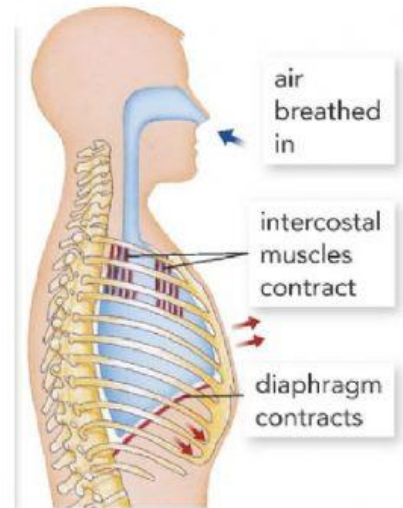
- |                   |   |
|-------------------|---|
| 1. Mouth and nose | A. two smaller tubes that connect the trachea and the lungs |
| 2. Vocal cords    | B. two large bags   |
| 3. Bronchioles    | C. long, rigid tube   |
| 4. Lungs          | D. air enters the body through them                         |
| 5. Trachea        | E. tiny sacs in the lungs                                   |
| 6. Bronchi        | F. small tubes inside the lungs                             |
| 7. Alveoli        | G. they vibrate and enable us to speak                      |

Complete the text about the movement of the lungs, INHALATION, using the words in the box:

ribcage   lungs   downwards   inhale   inflate   bigger   contracts

When we \_\_\_\_\_, the diaphragm \_\_\_\_\_ and pulls \_\_\_\_\_, the intercostal muscles contract and lift the \_\_\_\_\_.

The space inside the \_\_\_\_\_ is \_\_\_\_\_ so they inflate and take the air.



Complete the text about the movement of the lungs, EXHALATION, using the words in the box:

intercostal   lungs   diaphragm   exhale   relax   smaller   getting

When we \_\_\_\_\_, the \_\_\_\_\_ and the \_\_\_\_\_ muscles \_\_\_\_\_.

The space in the \_\_\_\_\_ becomes \_\_\_\_\_, pushing out the air that they contain and \_\_\_\_\_ smaller.



Complete with the words in the box:

mouth    vocal cords    trachea    bronchi    lungs    bronchioles

\_\_\_\_\_ They produce sound when air passes over them.

\_\_\_\_\_ They are two large bags that are connected to the bronchi.

\_\_\_\_\_ Air enters the body through this.

\_\_\_\_\_ They are small tubes inside the lungs.

\_\_\_\_\_ They are tubes that connect the trachea to the lungs.

\_\_\_\_\_ A long tube that connects the mouth to the bronchi.