

**3** *There be + noun (+ in)* can also be used to describe trends.

Example: *There was a rise in fast food consumption.*

Write the noun form of the verbs 1–7.

Example: *rose*      *rise*

1 increased

5 fell

2 peaked

6 dropped

3 decreased

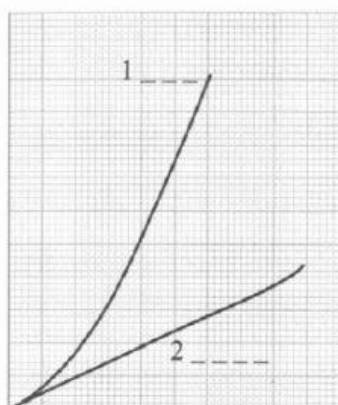
7 fluctuated

4 dipped

**4** The adjectives a–g can be used to describe the degree of change represented in a line graph. Adjectives are placed before the noun.

Example: *There was a sharp rise in fast food consumption.*

Match each adjective with the line that it best describes.



- a gradual
- b moderate
- c modest
- d sharp
- e dramatic
- f slight
- g steep

**5** Adverbs can also be used to describe the degree of change. Adverbs come after the verb.

Example: *Fast food consumption rose sharply.*

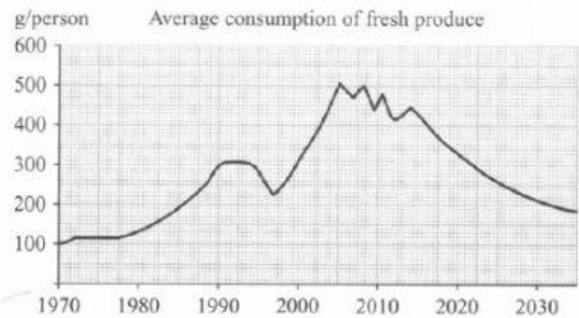
The sentences 1–5 on the left describe trends using *there be + adjective + noun*. Complete the sentences on the right using the corresponding verb + adverb.

Example: <i>There was a steep increase in sales of convenience food.</i>	<i>Sales of convenience food increased steeply.</i>
1 There was a dramatic decrease in the use of dietary supplements.	The use of dietary supplements _____.
2 There was a modest dip in levels of obesity.	Levels of obesity _____.
3 There was a slight fall in the production of genetically modified food.	The production of genetically modified food _____.
4 There was a significant drop in levels of malnutrition.	Levels of malnutrition _____.
5 There was moderate fluctuation in the availability of seasonal produce.	The availability of seasonal produce _____.

## Part 2: Practice exercises: Task 1

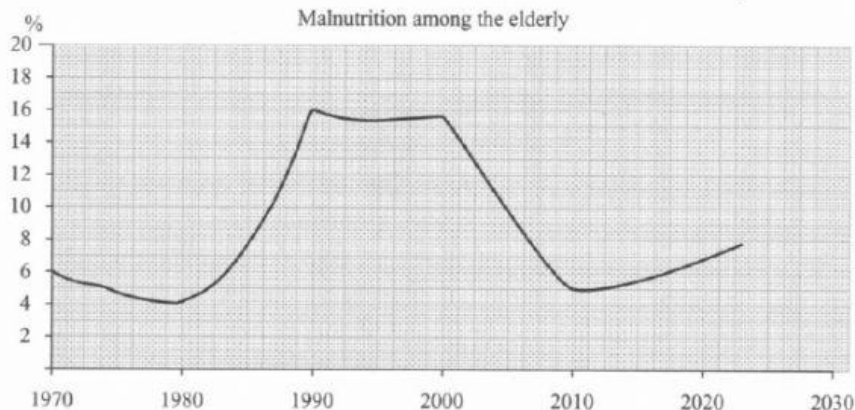
- 1 In order to describe a line graph, you need to understand the time frame and use the correct tense. Study the graph below. Then read the passage and draw a solid line (—) under examples of the past tense, a dotted line (.....) under examples of the present perfect tense, and circle the expressions which refer to the future. Then answer questions 1–4.

Consumption of fresh fruit and vegetables rose steadily from 1970 to 1990, and then levelled off. There was a dip in the early and mid 1990s, and then a further rise until it reached a peak of 500g per person in 2005. Since then consumption has fluctuated. Over the next ten years, consumption is expected to fall steadily. Between 2020 and 2030, it is also projected to decline, but more gradually.



- When should you use the past tense in describing a line graph?
- When should you use the present perfect tense?
- What other expressions can you use for future trends?
- When would you use the present tense?

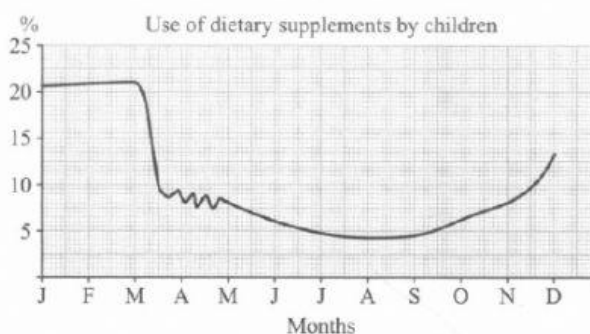
- 2 Complete the passage below using verbs, adverbs, adjectives and nouns. Make sure you use the correct verb tenses. The first one has been done for you.



The percentage of malnourished elderly people in the EU fell gradually between 1970 and 1978. Over the following seven years, it (1) \_\_\_\_\_ (2) \_\_\_\_\_, until 1990, when it (3) \_\_\_\_\_ at 16 per cent. After falling slightly, the rate of malnutrition (4) \_\_\_\_\_ for a decade. Since 2000, there (5) \_\_\_\_\_ a (6) \_\_\_\_\_ fall. Over the next ten years, it is (7) \_\_\_\_\_ to (8) \_\_\_\_\_ (9) \_\_\_\_\_.

- 3 When describing a line graph, you should also indicate precisely the time you are referring to. Use the expressions a–e to complete the passage below.

- a over the next .../for the following ...
- b thereafter
- c from ... to/between ... and
- d until
- e in [x2]



The percentage of children using supplements is at its highest level (1) \_\_\_\_\_ January \_\_\_\_\_. It then falls sharply and fluctuates (2) \_\_\_\_\_ two months. Supplement use continues to fall gradually (3) \_\_\_\_\_ it reaches its lowest point (4) \_\_\_\_\_ August. (5) \_\_\_\_\_, it increases gradually during the autumn months and more sharply (7) \_\_\_\_\_ December.

**Exam tip:** You can also use *from ... to* to describe the amount of change.

Example: *The percentage of children taking dietary supplements fell from 21 per cent in January to 6 per cent in March.*

Notice that the start and end points are indicated by *in* (*in January ... in March*). If you find this word order confusing, put the time frame at the start of the sentence and the amount of change at the end.

Example: *Between January and March, the percentage of children taking dietary supplements fell from 21 per cent to 8 per cent.*

- 4 Compare the two descriptions of a graph on obese adults. Underline any differences that you find.

#### Description 1

The percentage of obese adults rose steadily from 8 per cent in 1950 to 15 per cent in 1970. There was a slight dip, and then there was a gradual rise until 1990. It rose steeply for the next ten years, and then it levelled off. It has risen even more sharply, and it is projected to peak at 35 per cent in 2010 and then it will level off.

#### Description 2

The percentage of obese adults rose steadily from 8 per cent in 1950 to 15 per cent in 1970. There was a slight dip, followed by a gradual rise until 1990. After rising steeply for the next ten years, it levelled off. Since then, it has risen even more sharply. It is projected to peak at 35 per cent in 2010, and level off thereafter.

Now use the expressions: *followed by ...*, *after + -ing* and *since then* to rewrite the description below. Remove any unnecessary words.

Between 1996 and 1999, expenditure on convenience foods fell gradually from approximately £25 per week to half that amount. It rose sharply over the next three years and then levelled off at £30 per week. It remained the same for over two years. It dipped briefly and then rose slightly. Between 2005 and 2007 it fluctuated. It rose sharply and peaked at nearly £50 per week in 2008 and then started to fall.