

# TASTE

## 1. Drag the words to complete the text and then, label the picture.

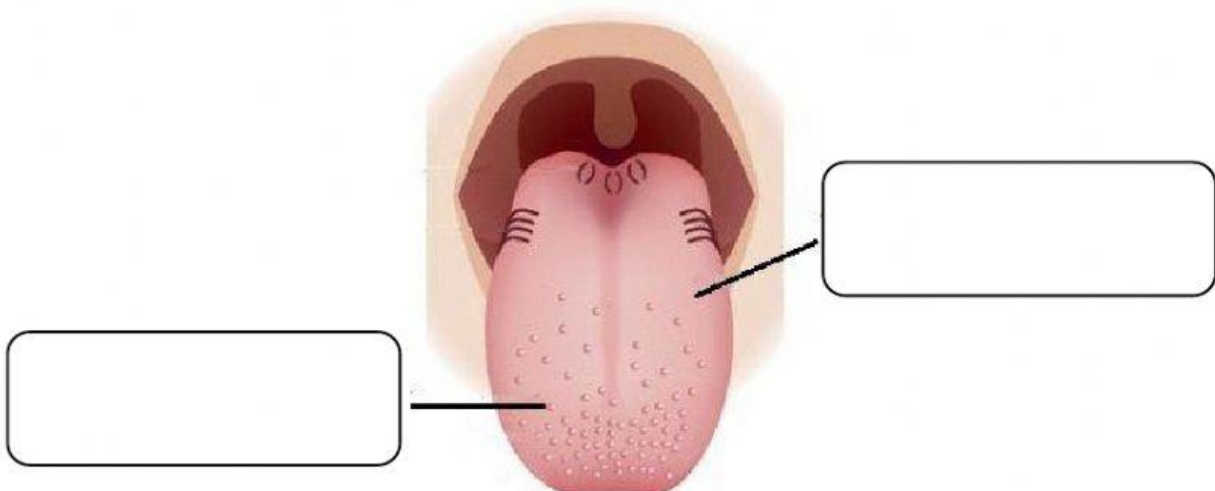
taste buds    salty    taste    brain    flavours    nerves    tongue

You use your sense of \_\_\_\_\_ to capture different \_\_\_\_\_ of foods.

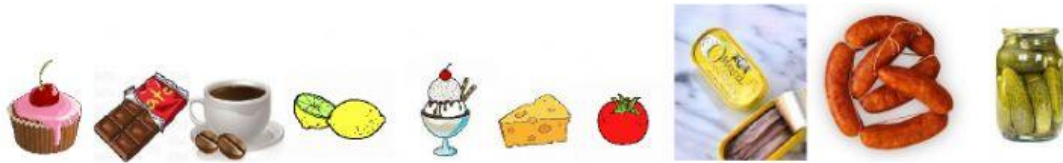
The \_\_\_\_\_ is the main sense organ of taste. It is covered with small bumps called \_\_\_\_\_. These capture different types of flavours.

You can distinguish five basic flavours: sweet, \_\_\_\_\_, sour, bitter and umami.

All other flavours are a combination of these five basic flavours. Information from your sense of taste reaches the \_\_\_\_\_ through your \_\_\_\_\_.



2. Classify this food into the corresponding place (in the order they appear):



SWEET	SALTY	SOUR	BITTER	UMAMI
