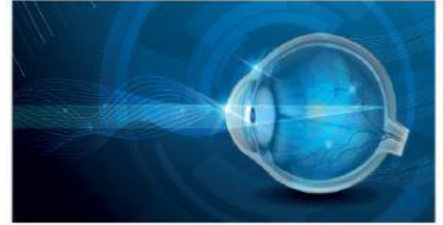


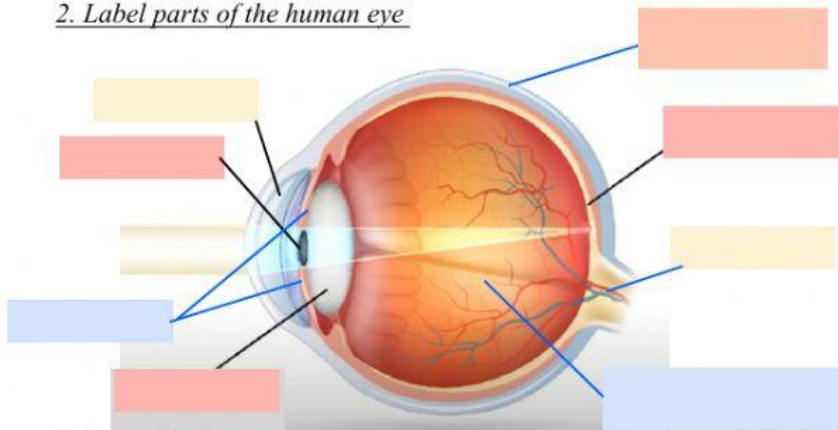
SIGHT and the EYE



1. Choose the correct word:

_____ stimuli is picked up by visual _____ located in the _____. Eye is the _____ of the sight. Visual _____ are stimulated by _____, colour and movement.

2. Label parts of the human eye



WORD BANK

CORNEA	RETINA	LENS
OPTIC	IRIS	PUPIL
NERVE	VITREUS	SCLERA
	HUMOUR	

3. Complete the sentences. Use words offered in the Word Bank

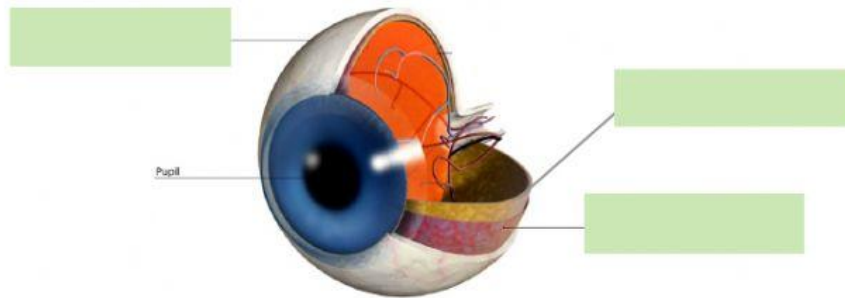
1. The part of the eye through which light enters is called the _____.
2. The _____ has six tiny muscles, which control the eye's movements. It's white.
3. The _____ covers the iris and the pupil and helps the eye to focus.
4. The part of the eye which sends signals to the brain is the _____.
5. Light is focused onto the retina by the _____.
6. The _____ is the part of the eye which changes light into the electric signals.
7. The _____ is the coloured part of the eye.
8. The _____ is a jelly-like substance that makes the eye round in shape

4. Complete the sentences:

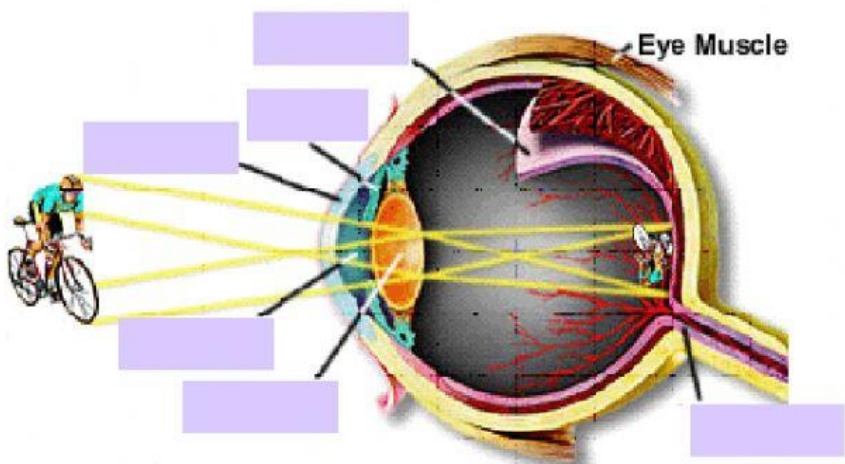
- a) The is the front part of the sclera and it is transparent.
- b) The nerve transports visual stimuli to the brain.
- c) The is the coloured part of the eye.

- d) The part of the eye that is sensitive to light is the
- e) The part that regulates how much light gets into the eye is called

5. The eye is made of 3 layers. Describe:



6. Describe:



The image reflected on the retina is _____ and _____.

The most common vision disorder are _____ hyperopia, _____ and presbyopia.

The tactile reading and writing system for blind people is called _____.

the near-sighted disorder is called _____

the far-sighted disorder is called _____