

Practice Questions

Section A: Multiple-choice questions

For each question, 4 options are given. One of them is the correct answer. Make your choice (1, 2, 3 or 4). Write your answer in the brackets provided.

1. Which statement is **incorrect**?
 - (1) Light is matter.
 - (2) Light is a form of energy.
 - (3) Light allows us to see objects around us.
 - (4) Light is important in some life processes. ()

Study the following table and answer questions 2 and 3.

Group A	Group B
Sun	Fire
Firefly	Table lamp
X	Y

2. Which of the following shows suitable headings for groups A and B? ()

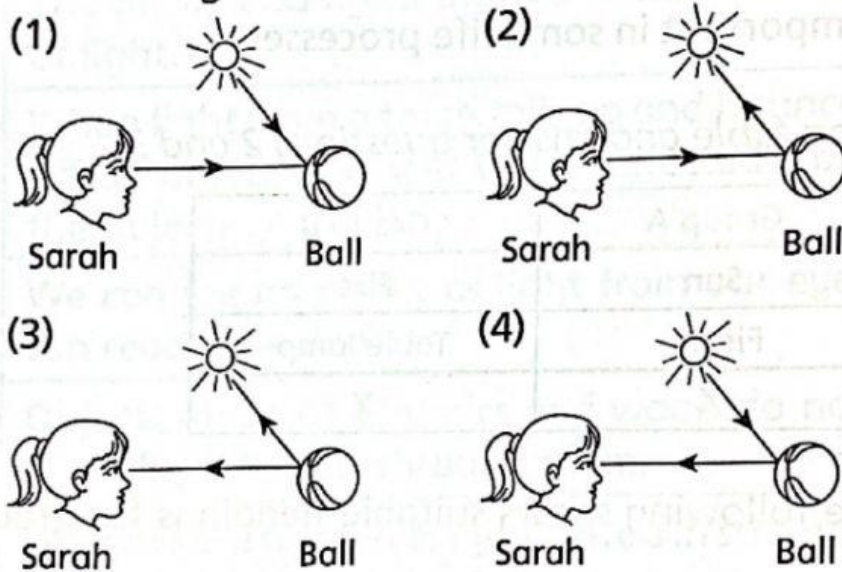
	Group A	Group B
(1)	Natural sources of light	Artificial sources of light
(2)	Non-matter	Matter
(3)	Living things	Non-living things
(4)	Give off heat	Do not give off heat

()

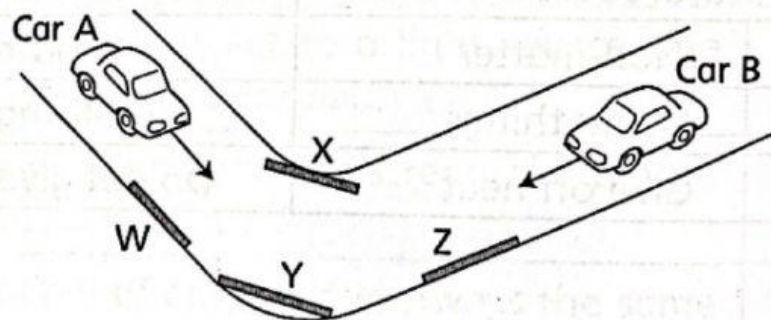
3. Which examples best fit X and Y?

	X	Y
(1)	Star	Moon
(2)	Lighted candle	Star
(3)	Lightning	Lighted candle
(4)	Lightning	Moon

4. Which diagram shows why Sarah is able to see the ball?



5. Study the diagram below.



Which mirror will enable the drivers in cars A and B to see each other?

- (1) W (2) X
(3) Y (4) Z

6. Which statement explains why the Moon can be seen at night?
- (1) The Moon is a source of light.
 - (2) The Moon reflects light from the Sun.
 - (3) The Moon reflects light from the Earth.
 - (4) The Moon reflects light from the Sun and the Earth.

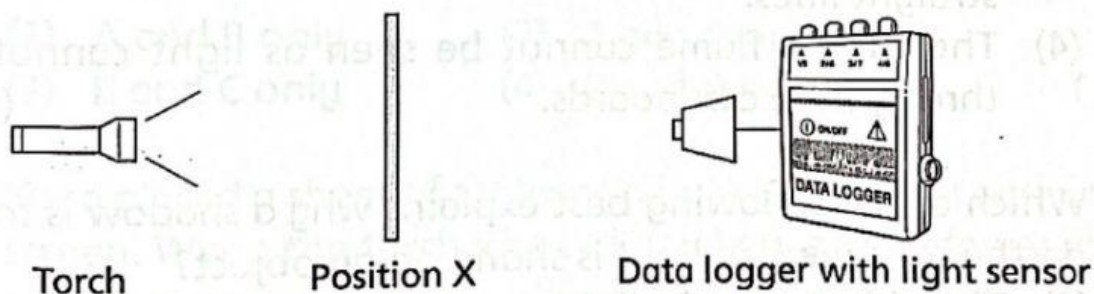
()

7. Which shows the correct examples of the different materials?

	Allows most light to pass through	Allows some light to pass through	Allows no light to pass through
(1)	Tracing paper	Frosted glass	Ceramic vase
(2)	Ceramic vase	Tracing paper	Metal door
(3)	Clear plastic bottle	Frosted glass	Metal door
(4)	Clear plastic bottle	Ceramic vase	Frosted glass

()

8. Clover performed the following experiment in the dark.



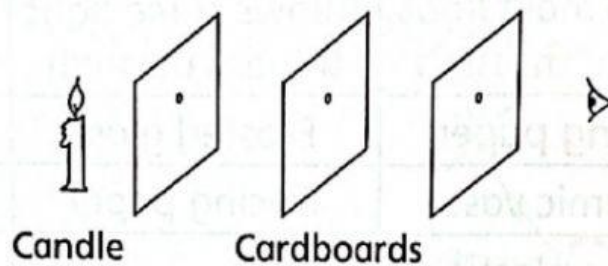
She used materials A, B and C and recorded the readings from the data logger as shown below.

Material	Amount of light detected by the light sensor (Lux)
A	120
B	6
C	50

Which conclusion can Clover make for her experiment?

- (1) Material B did not allow light to pass through it.
 - (2) Material A allowed the most light to pass through it.
 - (3) Material A allowed less light to pass through it than material C.
 - (4) Material B allowed more light to pass through it than material C.
- ()

9. Study the diagram below.



Which statement is correct?

- (1) The candle flame can be seen as light travels in straight lines.
 - (2) The candle flame can be seen as light can pass through the cardboards.
 - (3) The candle flame cannot be seen as light does not travel in straight lines.
 - (4) The candle flame cannot be seen as light cannot pass through the cardboards.
- ()

10. Which of the following best explains why a shadow is formed on the screen when light is shone on an object?

- (1) The object absorbs light energy.
 - (2) The object reflects light from the light source.
 - (3) Light from the light source is blocked by the object.
 - (4) Light from the light source can pass through the object.
- ()

11. Which statement about shadows is **incorrect**?
- (1) A shadow is a region where there is no light.
 - (2) The shadows of an object can be different in size.
 - (3) The shadows of an object can be different in shape.
 - (4) Shadows are formed because light bends around the object.
- ()

12. Study the cylinder below.



Which of the following shadows can be formed when light is shone on the cylinder from different positions?

A



B



C



D



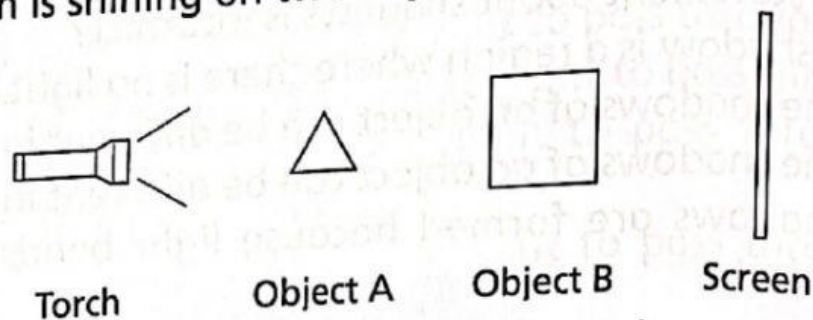
- | | |
|------------------|------------------|
| (1) A and B only | (2) A and D only |
| (3) B and C only | (4) C and D only |
- ()

13. Yana placed a sheet of material X between a torch and a white screen. When the torch was switched on, no shadow was seen on the screen.

Which object can be made using material X?

- | | |
|----------------------|----------------|
| (1) Spectacle lenses | (2) Sunglasses |
| (3) Curtains | (4) Mirrors |
- ()

14. A torch is shining on two objects as shown below.



The shadow formed on the screen is as shown.



Which materials of objects A and B are correct?

	Material of object A	Material of object B
(1)	Clear plastic	Frosted glass
(2)	Frosted glass	Wood
(3)	Clear plastic	Wood
(4)	Wood	Frosted glass

()

15. The diagram below shows a purse.



Which of the following shadows **cannot** be formed when light shines on the purse from different directions?

(1)



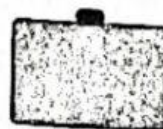
(2)



(3)

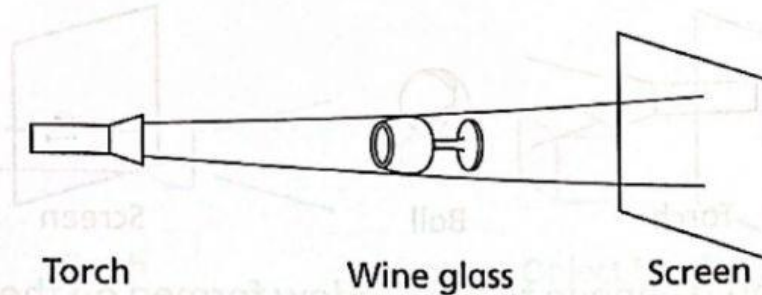


(4)



()

16. Study the diagram below.

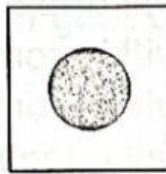


Which of the following will be observed on the screen?

(1)



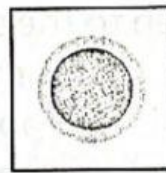
(2)



(3)



(4)



()

17. Which of the following statements is correct?

- (1) The shadows of an object are always similar.
- (2) The shadow of an object resembles the object.
- (3) The shadow of an object is always of the same size as the object.
- (4) The shadow of an object is formed between the object and the light source.

()

18. Evelyn placed an object between a torch and a screen.

Which of the following should she do to make the shadow on the screen bigger?

- (1) Move the torch nearer to the object.
- (2) Move the object nearer to the screen.
- (3) Move the screen nearer to the object.
- (4) Move the object further from the torch.

()