



Primary 5 Science
Topical Test 2 / Term 2
Unit 2

Name : _____

Marks : _____ / 30

Class : _____

Parent's Signature : _____

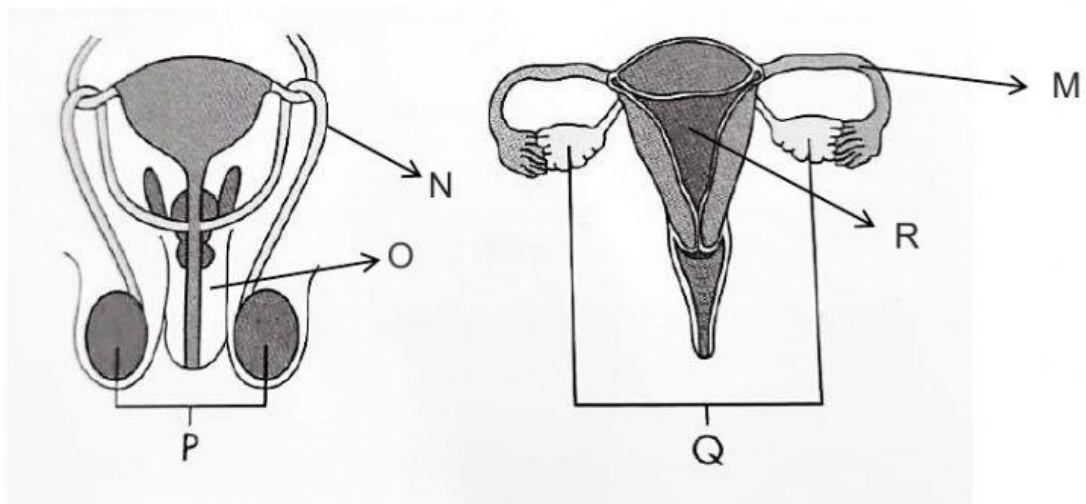
Date : _____

Duration : 45 minutes

ESSAY

Read the questions carefully and write your answer in the space provided below.

1. The diagram below shows the male and female reproductive parts in humans.



- a. Which letter shows the part of human reproductive system that produces the sperms? (1)

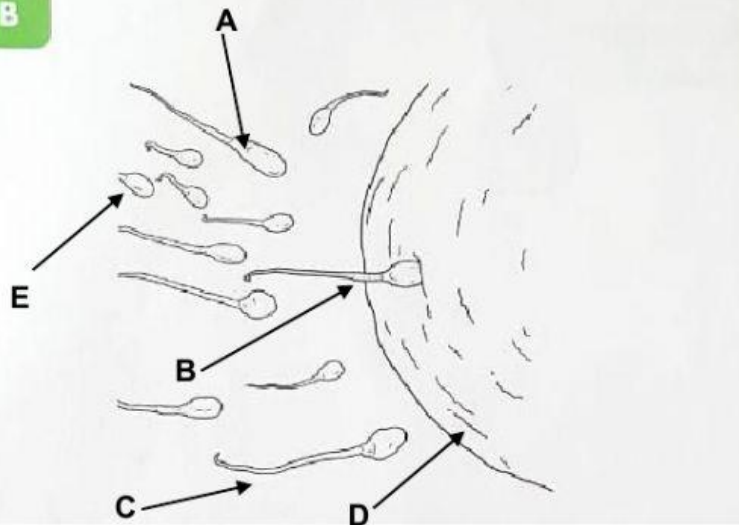
- b. Which letter shows the part of human reproductive system that produces the eggs? (1)

- c. How can fertilization occur if one part of M in the diagram above failed to function? Explain your answer. (2)



2. Study the diagram below carefully.

Diagram B



a. Name the process shown in the diagram above. (1)

b. In diagram B, which letters that shows the reproductive cells that will pass on their hereditary information to the baby, which develops after process in (a) occurs? (2)

Male reproductive cell: _____.

Female reproductive cell: _____.

c. Describe the process that is shown taking place in (a). (2)

d. What will happen after the process in (a) is completed. (3)

3. Darren has single eyelids. He observed that his parents also have single eyelids. Darren then predicted that his unborn baby sister will have single eyelids.

Explain how Darren came up with this prediction. (2)

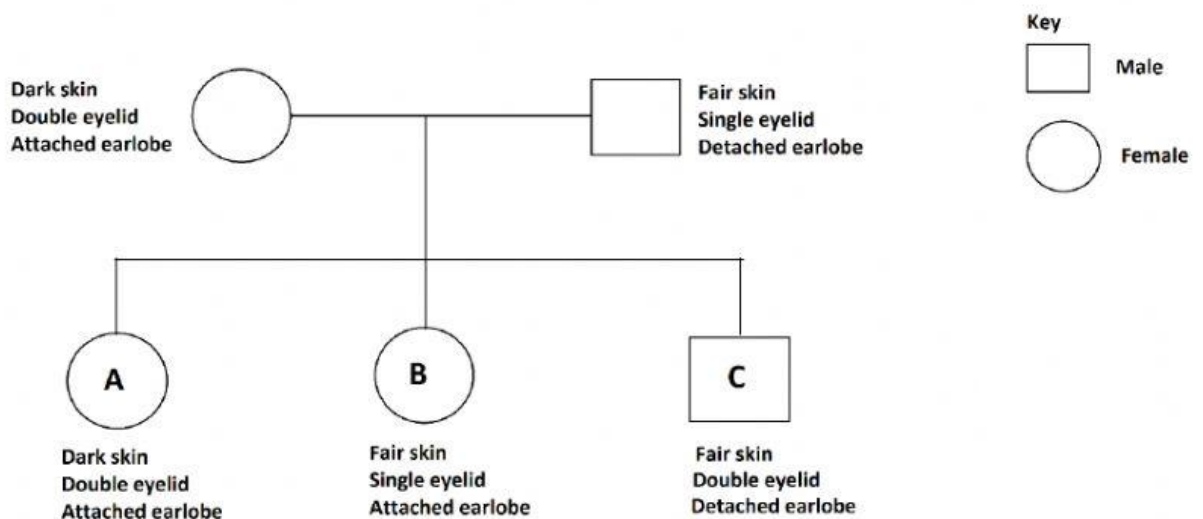


4. Study the picture below.



State three observable characteristic that are passed on from the parents to their young. (3)

5. Study the family tree below and answer the questions below.

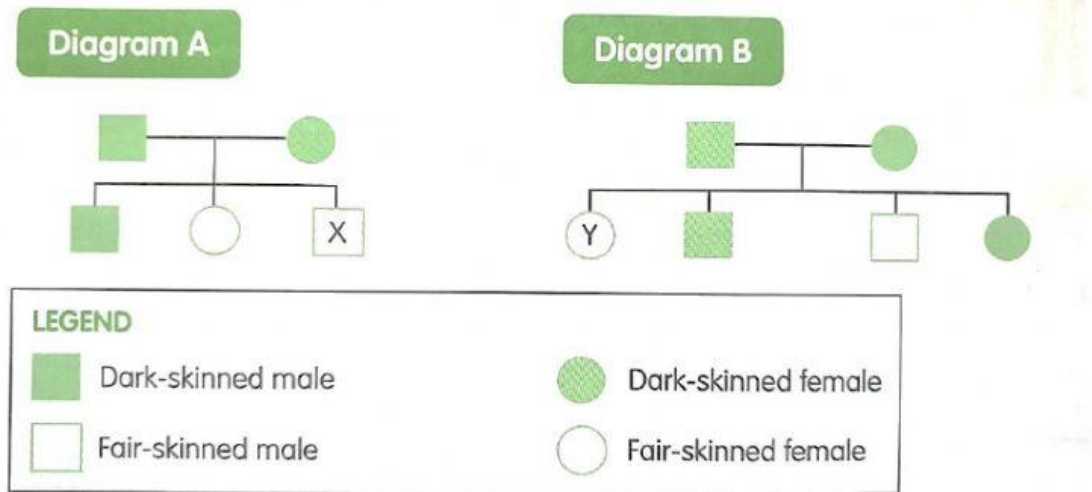


a. What are the characteristics that the only boy in the family inherits from his father? (2)

b. Who did Child 'A' inherit dark skin from? (1)

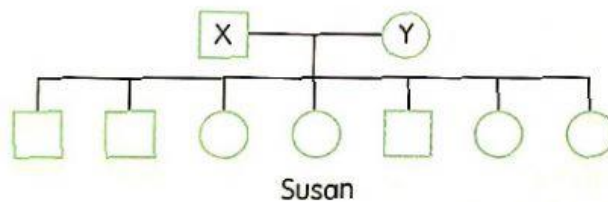


6. Diagram A and B show the inheritance pattern of skin color in two families, S and T respectively.



- a. If X and Y were to get married and have children, predict the four possible combination of skin color and gender of their children. (4)
- i. _____
- ii. _____
- iii. _____
- iv. _____
- b. Diagram C shows Susan's family tree, where Susan is the daughter of X and Y. Based on diagram A, B and C, answer the following questions. (3)

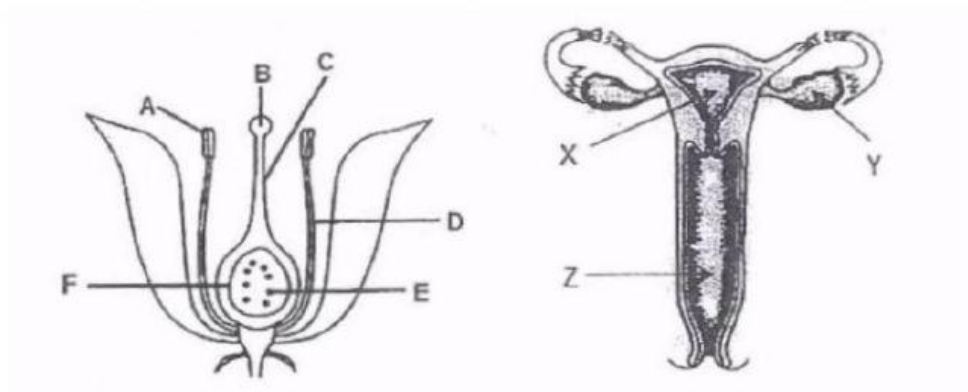
Diagram C



- i. How many uncles does Susan have? _____
- ii. How many of Susan's aunt have fair skin? _____
- iii. How many sisters does Susan have? _____



7. The diagrams below show the reproductive parts of a flowering plant and a female human.



- a. Mention two letters that represent the part where the female reproductive cells are produced from both diagrams. (2)

- b. Explain how the growths of fertilized egg are different between the flowering plant and human. (2)
