

Dowroong Wittaya School

Final Test

Semester 1

Academic year: 2021-2022

Course No.: _____

Course Title: Science

Class: P 4/1

Name: _____

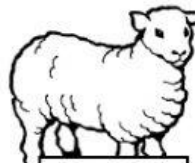
Number: _____

A. Group the following animals according to the food they eat.

HERBIVORES	CARNIVORES	OMNIVORES
1. Sheep	1. Cheetah	1. Pig
2.	2.	2.
3.	3.	3.
4.	4.	4.



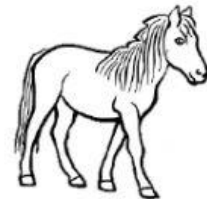
Tiger



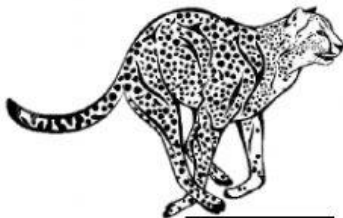
Sheep



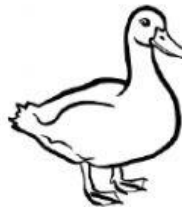
Snake



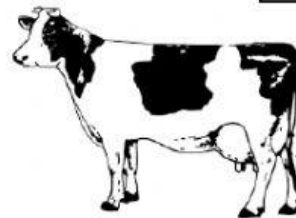
Horse



Cheetah



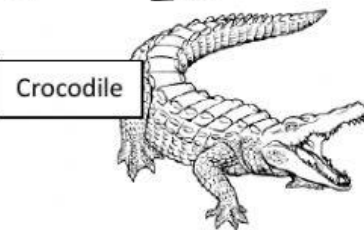
Duck



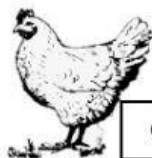
Cow



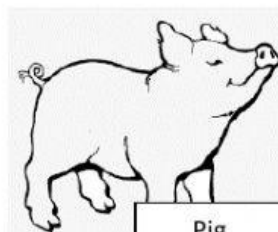
Caterpillar



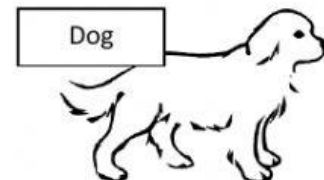
Crocodile



Chicken

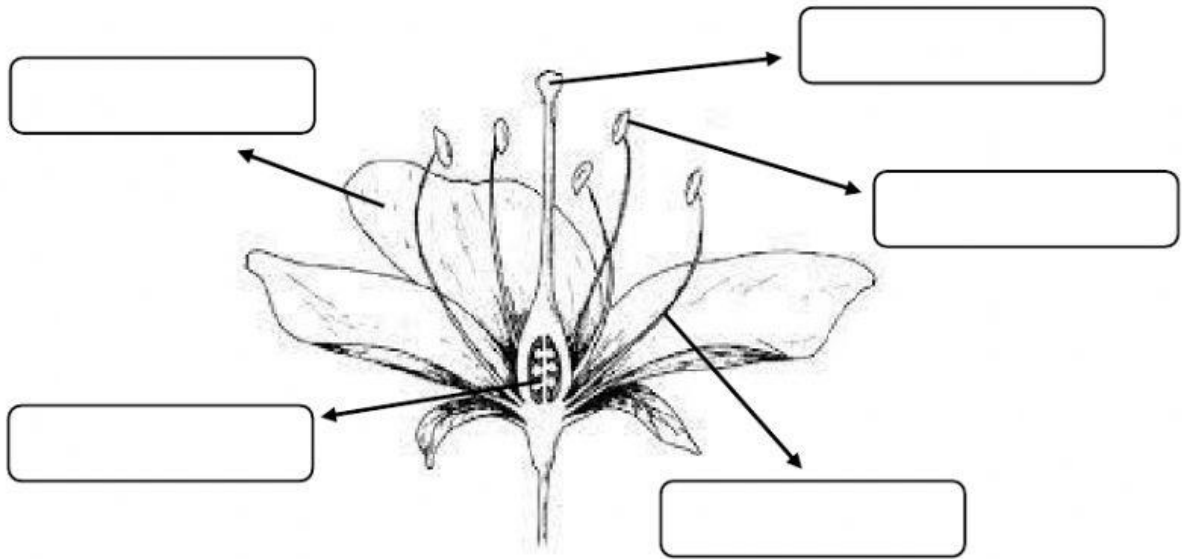


Pig



Dog

B. Name the parts of a flower. Choose your answer from the box below.



- | | | |
|-----------------|---------------|---------------|
| Petal | Anther | Stigma |
| Filament | Ovary | |

C. **True of False.** Write TRUE if the statement is correct and FALSE if it is not.

1. Non-flowering plants are plants that **don't** produce flowers.
2. Mosses have simple stems and tiny roots.
3. Ferns **doesn't** have proper stems, leaves and roots.
4. Conifers have needle-like leaves.
5. Flowering plants are plants that **don't** produce flowers.