

School Number:	Candidate Number:
Surname:	Initials:

# **GEOGRAPHY**

## **Unit Test- 1**

### **Grade 10A**

**Instructions:** Answer **ALL** sections.

The number of marks available is shown in brackets [ ] at the end of each question or part question. This paper carries [ **35** ] marks.

#### **SECTION A: MULTIPLE CHOICE**

**Select the letter next to the correct answer. (10 marks)**

1. The main masses of land above sea level are called:

- a.) Continents
- b.) Island
- c.) Mountains
- d.) Countries

2. The thickest layer of the earth is called the :

- a.) Core
- b.) Mantle
- c.) Crust
- d.) Lithosphere

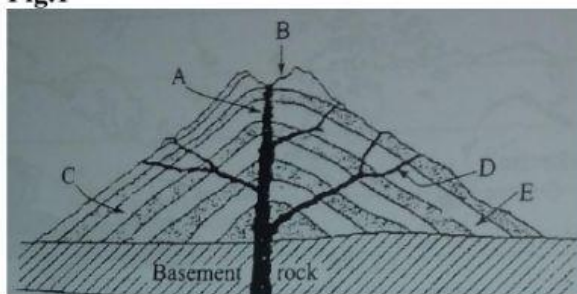
3. The Crust makes up about \_\_\_\_\_ of the Earth's structure.
- a.) 70%
  - b.) 30%
  - c.) 29%
  - d.) 1%
4. What another term for continental crust?
- a.) Basaltic
  - b.) Granitic
  - c.) Rigid
  - d.) Mantle
5. An earthquake is the \_\_\_\_\_.
- a.) Collision of continental and crustal plates
  - b.) Displacement of a large mass of water
  - c.) Shaking of the ground
  - d.) Opening of a fissure
6. If an earthquake occurs underwater is can result in a \_\_\_\_\_.
- a.) Fold
  - b.) Volcano
  - c.) Crater Lake
  - d.) Tsunami/Tidal Wave
7. Earthquake activity mainly occurs along \_\_\_\_\_.
- a.) Plate boundaries
  - b.) Coastlines
  - c.) Axial Planes
  - d.) Bedding Planes
8. Which one of the following features may occur when lava cools at the surface?
- a) Lava plateau
  - b) Sill
  - c) Batholiths
  - d) Dyke

9. This is a reservoir which houses the magma inside the volcano. Which feature is being described?

- a) Crater
- b) Magma chamber
- c) Pipe
- d) Vent

10. Name the part labeled D on the diagram of a composite volcano?

**Fig.1**



- a.) dyke
- b.) side vent
- c.) sill
- d.) magma chamber

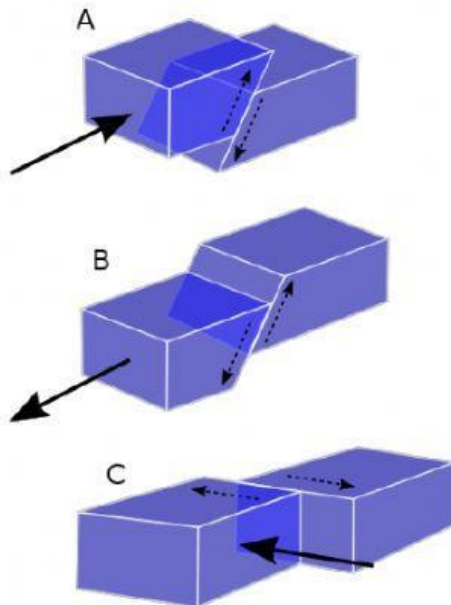
## SECTION B: SHORT ANSWERS

### Short Answer Questions/ Labeling

#### Question 1: Folding and Faulting

*Instructions: Answer the following questions the spaces provided below. The point value for each question is found in parenthesis ().*

- 1.) The upward bend of a fold is known as the \_\_\_\_\_ whereas the downward bend is known as the \_\_\_\_\_. (2).
- 2.) Two fold mountains are \_\_\_\_\_ and \_\_\_\_\_. (2)
- 3.) On the spaces provided below name the faults shown. (3)

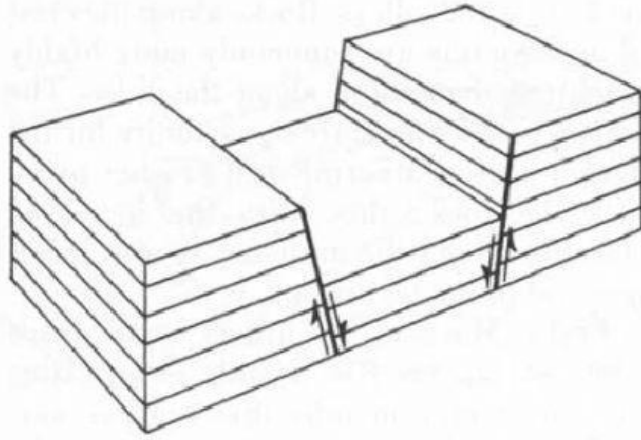


A \_\_\_\_\_

B \_\_\_\_\_

C \_\_\_\_\_

4.) How are Rift Valleys formed? (4)



---

---

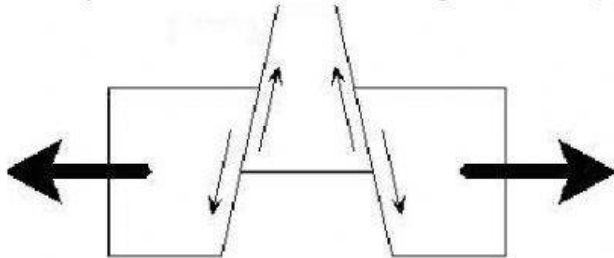
---

---

5.) Give the name of a place where a Rift Valley (Graben) is found? (1)

---

6.) Identify the feature shown in the diagram below. (1)



---

## Question 2: Plate Tectonics

*Instructions: Answer the following questions the spaces provided below. The point value for each question is found in parenthesis ().*

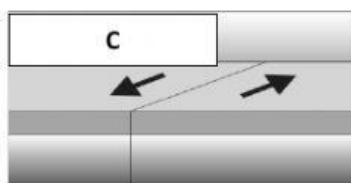
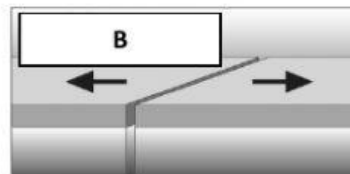
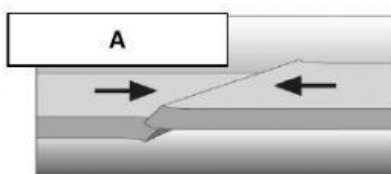
1. Plate margins are described as **Conservative**, **Destructive** and **Constructive**. Using the words above, write the most appropriate description for each of the following plate margins. (3 marks)

(a) Convergent: \_\_\_\_\_

(b) Divergent: \_\_\_\_\_

(c) Transform or Shearing: \_\_\_\_\_

*Study Fig. 2 below then name the plate margins shown: (3 marks)*



A: \_\_\_\_\_

B: \_\_\_\_\_

C: \_\_\_\_\_

2. List any four (4) of the major plates of the world. (2 marks)

(i) \_\_\_\_\_ (ii) \_\_\_\_\_ (iii) \_\_\_\_\_

(iv) \_\_\_\_\_ (v) \_\_\_\_\_ (vi) \_\_\_\_\_

3. Explain the following terms: (2 marks each)

(i) Continental Drift:

---

---

---

---

---

(ii) The Plate Tectonic Theory:

---

---

---

---

---