

Name: _____ Date: _____

Grade 7 Classwork on Characteristic of Living things

Part 1. Multiple Choice



1. Which characteristic of living organism is shown in the picture
A. excretion C. nutrition
B. growing D. reproduction
2. Which list includes only activities that are carried out by all living things?
A. excreting, growing, reproducing, respiring
B. excreting, moving, reproducing, sleeping
C. growing, moving, respiring, thinking
D. growing, respiring, swimming, thinking
3. Which characteristic of living things obtain and uses oxygen to produce energy?
A. digesting B. excretion C. reproduction D. respiration
4. We quickly withdraw our finger when it is pricked. This is an example of:
A. excretion B. irritability C. nutrition D. respiration
5. The picture shows one characteristics of living things.



- A. excretion B. growth C. nutrition C. irritability

6. Which row shows the correct definition for the term given?

	Term	Definition
A	Excretion	Removal of undigested food
B	Irritability	Ability to respond to stimuli
C	Respiration	Breathing
D	Reproduction	Producing new skin cells

7. Which of the following characteristics of living organisms enables them to detect and respond to stimuli?
A. excretion B. growth C. irritability D. movement

8. The diagram shows a mammal.

Which characteristic of living things is represented by the picture?



- A. excretion
- B. growth
- C. nutrition
- D. respiration

The picture shows a father with his two children. Eventually the children will be about the same size as their father. Use this picture to answer questions 9 and 10



9. Which characteristics of living things will be responsible for this change?

- A. excretion
- B. growth
- C. movement
- D. reproduction

10. Which characteristic of living things are most responsible for providing the family with the energy needed for them to run?

- A. excretion and movement
- B. nutrition and respiration
- C. reproduction and respiration
- D. reproduction and growth

11. In which characteristic of life passed on to produce a living thing?

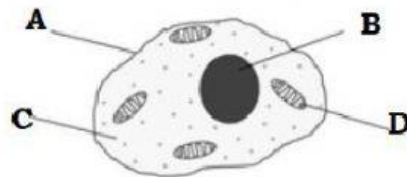
- A. excretion
- B. growth
- C. reproduction
- D. sensitivity

12. Which characteristics of living things enable a baby to develop inside its mother's womb?

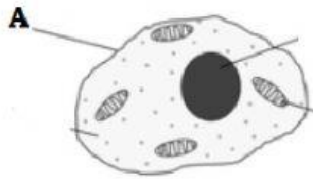
- A. excretion and respond
- B. growth and sensitivity
- C. movement and respiration
- D. nutrition and growth

Part II. The Human Body

1. In the diagram of a simple human cell, which letter points to the part where chromosomes would be found?

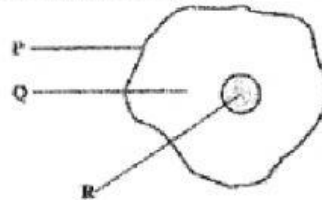


2. The diagram shows a typical animal cell. What is the function of structure A?



- A. controls the activities of the cell
- B. control what enters and leaves the cell
- C. contains the genetic information of the cell
- D. stores food

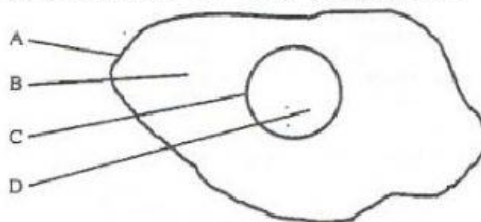
3. The diagram below represents a human cheek cell.



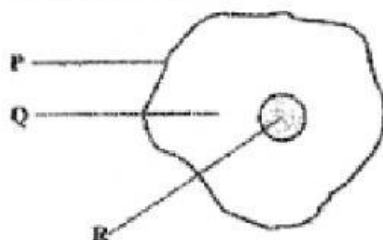
Which row in the table gives the correct name for each of this cheek cell?

	P	Q	R
A	Nucleus	Cytoplasm	Cell membrane
B	Cytoplasm	Nucleus	Cell membrane
C	Cell membrane	Cytoplasm	Nucleus
D	Cytoplasm	Cell membrane	nucleus

4. In this diagram of a human cell, which letter points to the part of the cell that is "selectively permeable" or "semi-permeable"?



5. The diagram below represents a human cell.



Which row in the table gives the correct name for each of this cell?

	P	Q	R
A	is a jelly-like substances	controls what the cells does	is partially permeable
B	is partially permeable	is a jelly-like substances	controls what the cells does
C	controls what the cells does	is partially permeable	is a jelly-like substances
D	is partially permeable	controls what the cells does	is a jelly-like substances

6. Which structure found in cells contains genes and chromosomes?

- A. cytoplasm B. membrane C. nucleus D. vacuole

7. What do you call the smallest unit of life?

- A. cell B. tissue C. organ D. system

8. Which structure in the human body are made up of different tissues combined to carry out specific function?

- A. cells B. organs C. platelets D. systems

9. The diagram below shows the levels of organization of the human body, from the simplest to the most complex.



What do letters P and Q represent?

- A. P is an atom and Q is a tissue C. P is a tissue and Q is an organ
B. P is an organ and Q is a tissue D. P is a tissue and Q is a molecule

10. Which row in the table correctly matches the body organs with the correct system?

	Organs	Body system
A	brain	Nervous system
B	Lungs	Muscular system
C	Kidneys	Respiratory system
D	Ovaries	Circulatory system