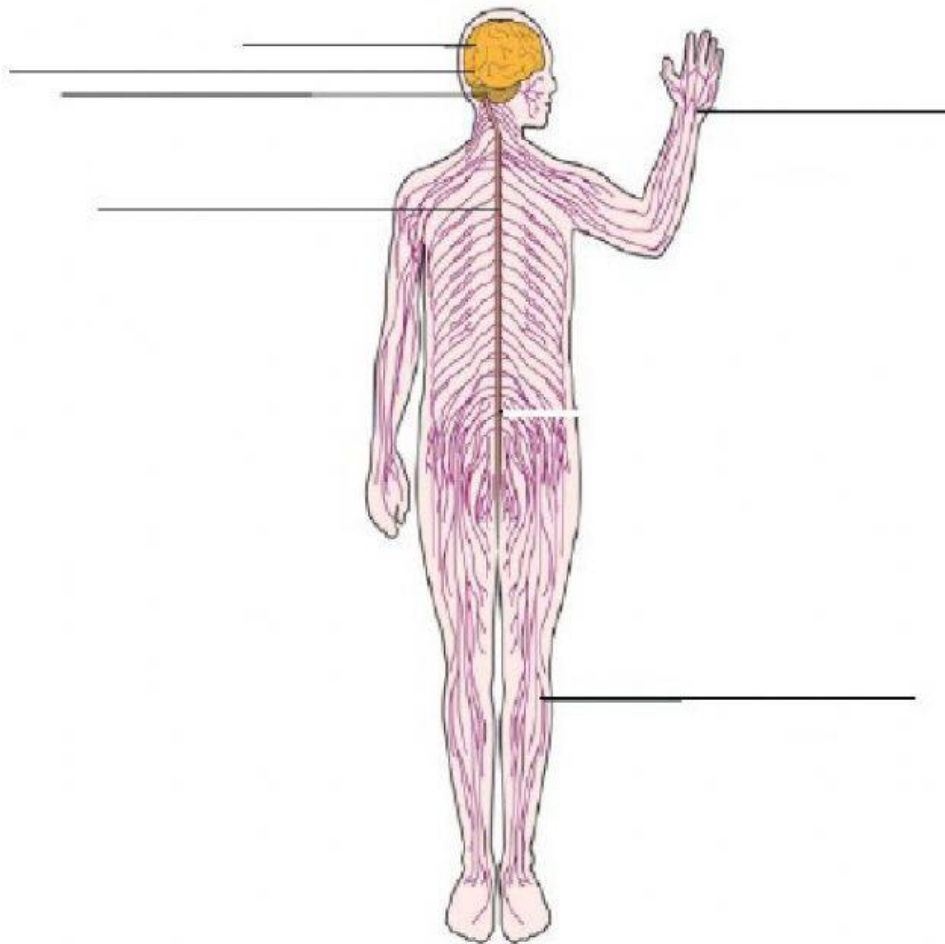


NERVOUS SYSTEM

A. Look carefully the next image, label its parts with the words from the box:

SPINAL CORD	CEREBRUM	CEREBELLUM
PERIPHERAL NERVES	BRAIN STEM	PERIPHERAL NERVES



B. Match the parts of the Nervous System and their functions:

- | | |
|----------------------|--|
| 1. Cerebrum | It controls involuntary actions such as breathing or heart race. |
| 2. Cerebellum | It controls voluntary actions such as running and talking. |
| 3. Brain stem | It controls movement, coordination and balance. |
| 4. Peripheral nerves | They are the nerve cells. |
| 5. Skull | It connects the brain and the peripheral nervous system. |
| 6. Spinal cord | It protects the brain. |
| 7. Neurons | It connects the central nervous system to the rest of the body. |