

Name:

Date:

Year:

EXERCISE 15.9: FERTILISATION AND SEED & FRUIT FORMATION
--

1. Put these words in the correct spaces below.

Stigma

Ovary

Pollen tube

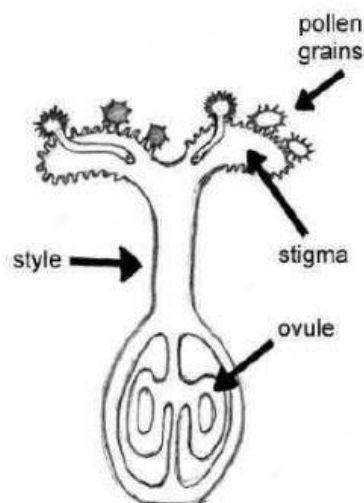
Fertilised

Fuses

Flower

Seeds

Fruits



- a) Pollen lands on the stigma but it's nucleus has to fuse with the ovule nucleus.
- b) To do this, a sticky solution on the top of the stigma stops the pollen from falling off or blowing away.
- c) The pollen makes which grow down the and into the
- d) When it reaches the ovule, the pollen moves down the tube and with the ovule nucleus.
- e) The ovule has then been

- f) After fertilization, most parts of the wither and die.
- g) The ovary gets bigger and becomes the
- h) When mature, the ovules in the fruits becomes the