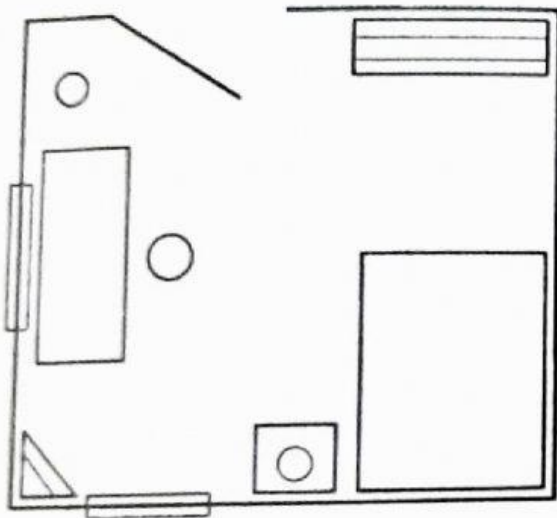


# The Title

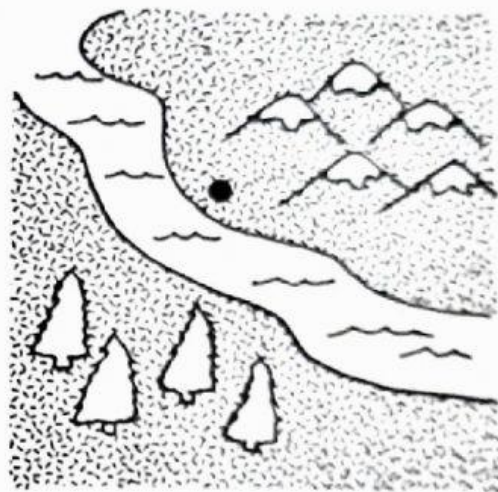
A *title* is a name. People have titles, and so do pets. Maps also have titles. A map's title tells us what the map is about.

Under each map, write the correct title.

<b>Rivertown</b>	<b>South America</b>
<b>Market Street</b>	<b>My Bedroom</b>



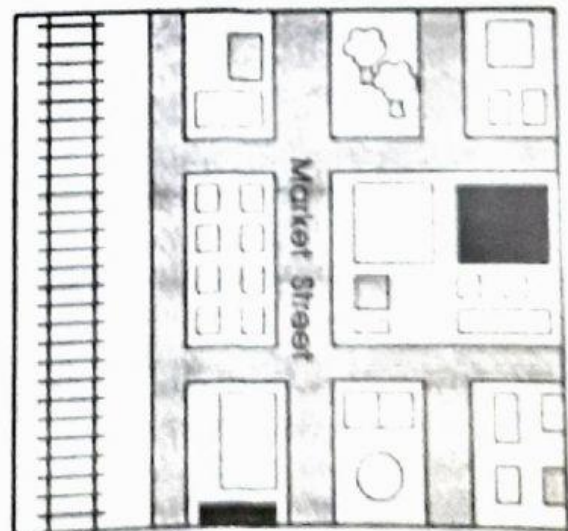
1. \_\_\_\_\_



2. \_\_\_\_\_



3. \_\_\_\_\_

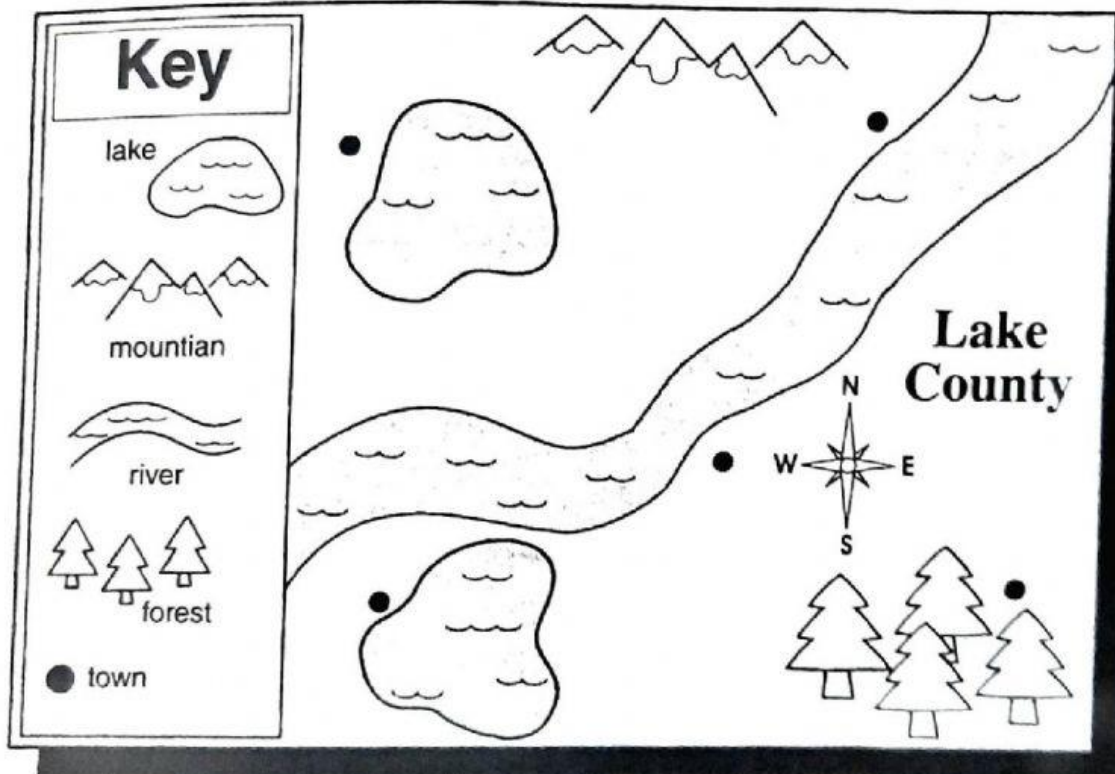


4. \_\_\_\_\_

# A Key

Map makers draw the symbols they use in a **map key**. The map key tells what each symbol stands for.

Look at this map and the map key. Use it to answer the questions below.



1. There are \_\_\_\_\_ lakes in Lake County.
2. There are \_\_\_\_\_ towns in Lake County.
3. One of the towns in Lake County is not by water. It is by the  
f \_\_\_\_\_.
4. Between a lake and the river, there are m \_\_\_\_\_ at the  
north end of Lake County.
5. A r \_\_\_\_\_ runs through the middle of the county between two lakes.