

## WRITTEN TEST UNIT 7 – MY HOUSE

NAME: \_\_\_\_\_

TEACHER: YANINA PLANES

### 1) Listen and write the parts of the house

#### Listening

1 There's a flat

2 There's a \_\_\_\_\_

3 There's a \_\_\_\_\_

4 There's a \_\_\_\_\_

5 There's a \_\_\_\_\_

6 There's a \_\_\_\_\_



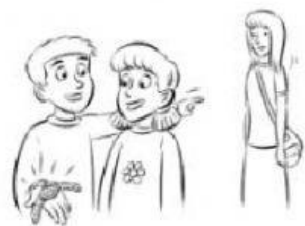
### 2) Look and write the possessives. Follow the example.



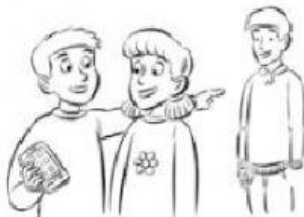
1 It's hers.



2 \_\_\_\_\_



3 \_\_\_\_\_



4 \_\_\_\_\_



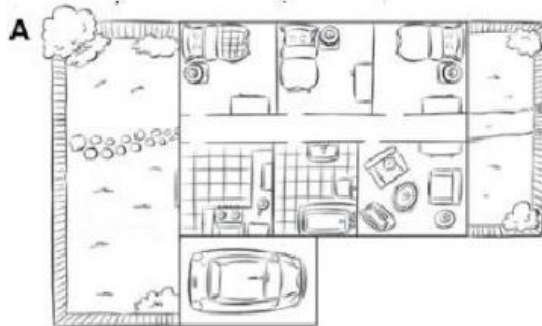
5 \_\_\_\_\_



6 \_\_\_\_\_

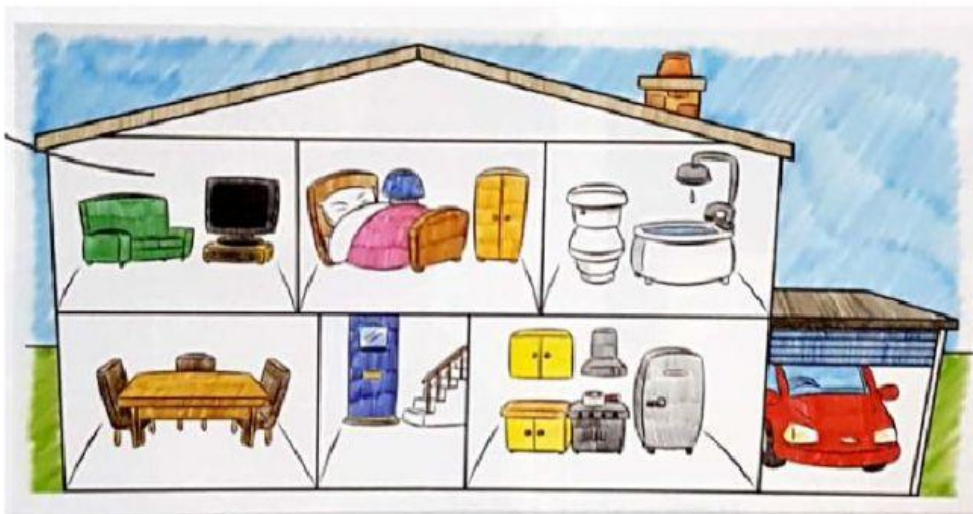
3) Look, choose and write A or B

Reading



- 1 There's a big garden. A
- 2 There's a hall. \_\_\_\_
- 3 There are two small bedrooms. \_\_\_\_
- 4 There isn't a garage. \_\_\_\_
- 5 There's a big living room. \_\_\_\_
- 6 There isn't a big bathroom. \_\_\_\_

4) Look at the house and write sentences



- a. (bedroom): There's a TV in the bedroom.
- b. (dining room): \_\_\_\_\_
- c. (garage): \_\_\_\_\_

- d. (small hall): \_\_\_\_\_  
 e. (bathroom) \_\_\_\_\_  
 f. (two sofas): \_\_\_\_\_

5) Write the possessives YOURS, HIS, HERS or MINE (escribir los posesivos)



Emma



Tom



Mark



Kay

1



EMMA: Whose is this watch?

TOM: It's \_\_\_\_\_

3



MARK: Whose is this camera?

TOM: It's \_\_\_\_\_

4



KAY: Whose is this radio?

TOM: \_\_\_\_\_

5



EMMA: Whose is this clock?

TOM: \_\_\_\_\_

6) Describe your house. Write positive and negative sentences.

✓	X
---	---

1-

2-

3-

4-

5-

6-