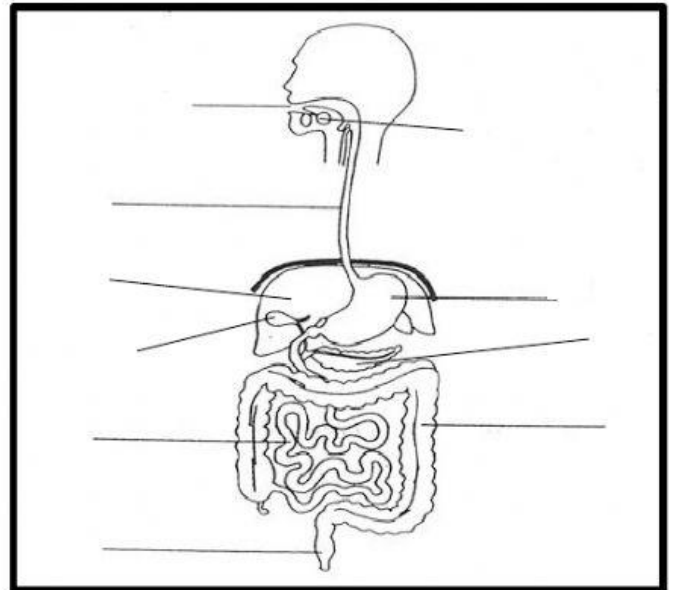


# THE HUMAN DIGESTIVE SYSTEM

Instructions: Label the following parts of the human digestive system on the diagram below.

- a. Mouth
- b. Salivary glands
- c. Esophagus
- d. Stomach
- e. Liver
- f. Pancreas
- g. Small intestine
- h. Large intestine
- i. Rectum
- j. Anus
- k. Gall bladder



*Fill in the blanks with the correct answers.*

Food passes from the \_\_\_\_\_ to the \_\_\_\_\_ to the \_\_\_\_\_ and then to the \_\_\_\_\_, where gastric juices break up proteins and other molecules. From the stomach, food passes to the \_\_\_\_\_, where nutrients are absorbed into the body's blood stream. Undigested material moves into the \_\_\_\_\_ or colon, where water is absorbed and the residual material is compacted. This material, now known as feces, moves into the \_\_\_\_\_ where it is stored temporarily until it passes out of the \_\_\_\_\_. Above the stomach is the \_\_\_\_\_, which plays many important roles in digestion and nested below the stomach is the \_\_\_\_\_ which secretes many of the digestive enzymes.