



Match the names of the organs with their function in the digestive process.

Stomach

Digestion begins here. Mechanical digestion happens here.

Liver

Produces enzymes and insulin, which helps to break down sugar in the body.

Salivary Glands

Final straight portion of the large intestine where waste is stored.

Large Intestines

Bile is stored here until it is needed for chemical digestion.

Anus

Hollow organ that holds food. Both mechanical and chemical digestion happen here in order to form the chyme.

Small Intestines

Produce saliva to help break down food.

Pancreas

Here water is absorbed in the bloodstream.

Gall bladder

A muscular tube that connects the mouth to the stomach. Peristalsis occurs here.

Mouth

Muscular ring through which waste leaves the body.

Epiglottis

Here nutrients are absorbed in the bloodstream.

Esophagus

Bile is created here. Largest organ in the body.

Rectum

A flap that covers the trachea when you swallow. It is located right before the esophagus.

Peristalsis

Muscle contractions that "push" the bolus down the esophagus.

Place the names of the organs in their correct place.

Liver

Gall bladder

Pancreas

Mouth

Anus

Large Intestines

Small Intestines

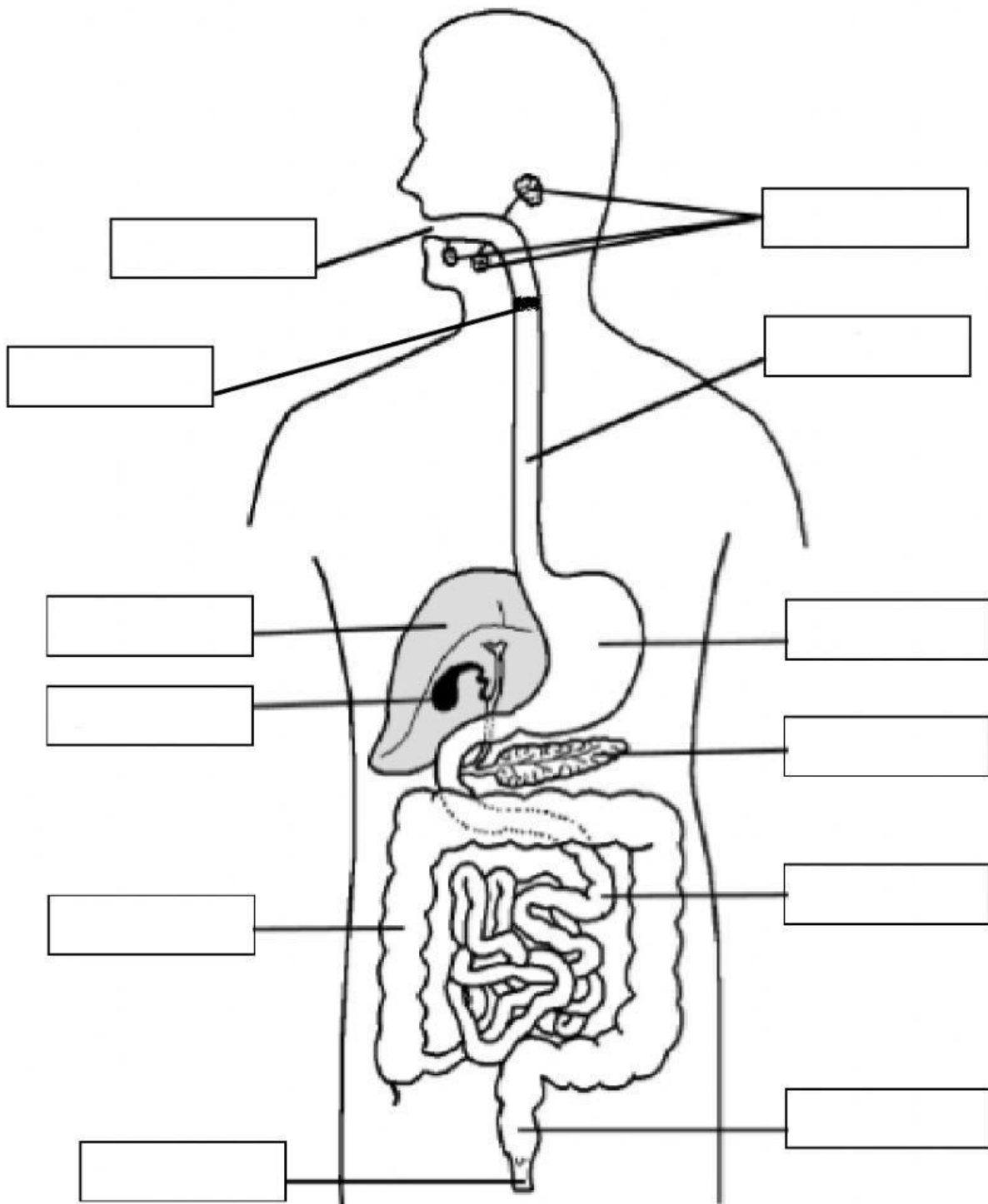
Epiglottis

Esophagus

Stomach

Salivary Glands

Rectum



Digestive System