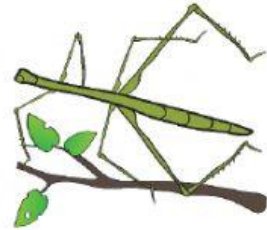
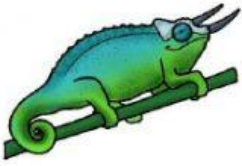


Animals using Mimicry and Camouflage

1. Write **C** for camouflage and **M** for mimicry to tell the animals' adaption.



2. What are the special features called that allow animals to live where they do?

- A. Adaptations
- B. Adopted
- C. Adjusted

3. What is an adaptation in which an animal looks or sounds like another animal called?

- A. Mimicry
- B. Camouflage

4. What is refers to an animal's ability to blend in with its surroundings.

- A. Camouflage
- B. Mimicry

5. Which adaption has colour, shape, or pattern that helps it blend in with its environment.

- A. Camouflage
- B. Mimicry

6. Which is **not** something that animals used in adaptation?

- behavior
- covering
- food
- action
- body parts