



PLANT CELL



Plants are living things. They are made up of cells.



yellow daisies



cactus



pine tree



apple tree



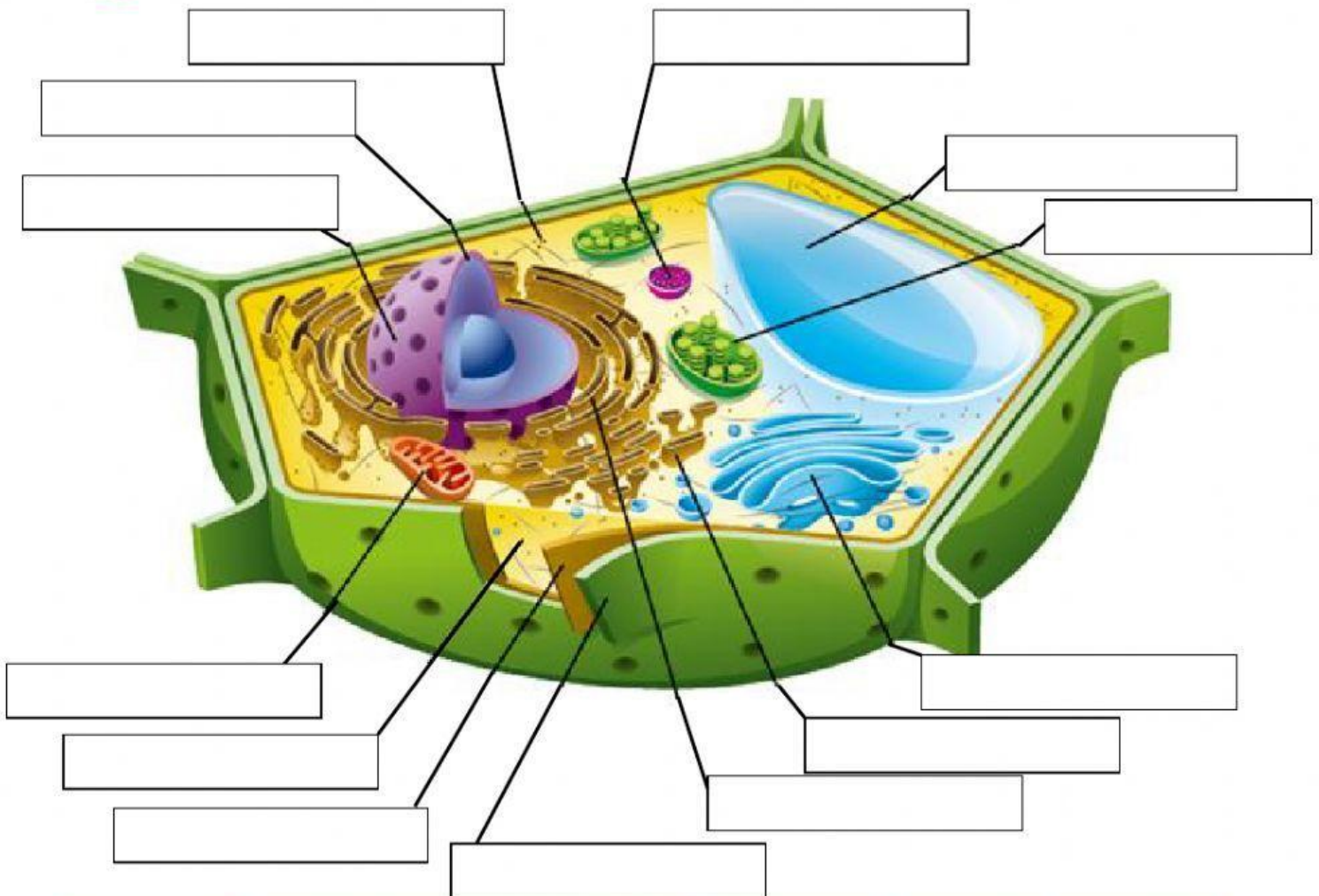
water lilies

Cells are the basic blocks of all living things.

Plant cells have similarities and differences with animal cells.



1-Label the main components and organelles of the plant cell:



Golgi body: Smooth endoplasmic reticulum Chloroplast Vacuoles: Lysosome

Mitochondrion Endoplasmic Reticulum Ribosome Nuclear membrane.

Nucleus: Cytoplasm Cell Membrane Cell Wall: