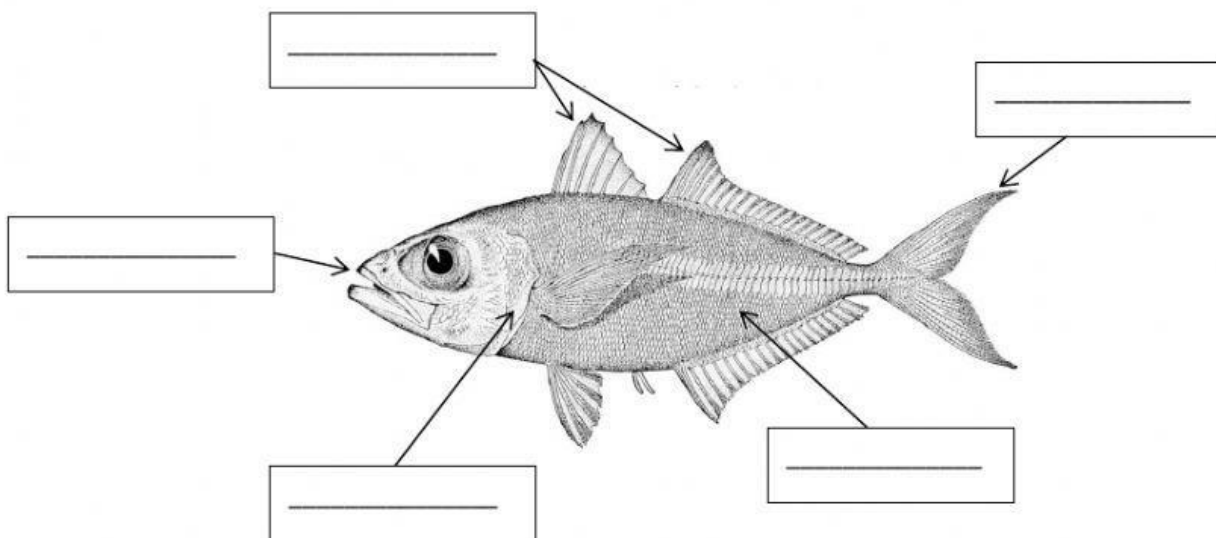


FISH

UNIT 2:
VERTEBRATES

1. Watch the video.

2. Complete the picture of the fish's body parts. Watch the video again.



Fins

Scales

Tail

Gills

Teeth

3. Choose the right option to complete the sentences.

Fish are _____. Because fish are born of _____.

Most fish are _____ like _____, they eat other animals. However, some fish are _____ like _____, they eat only plants. Others are _____, such as _____.