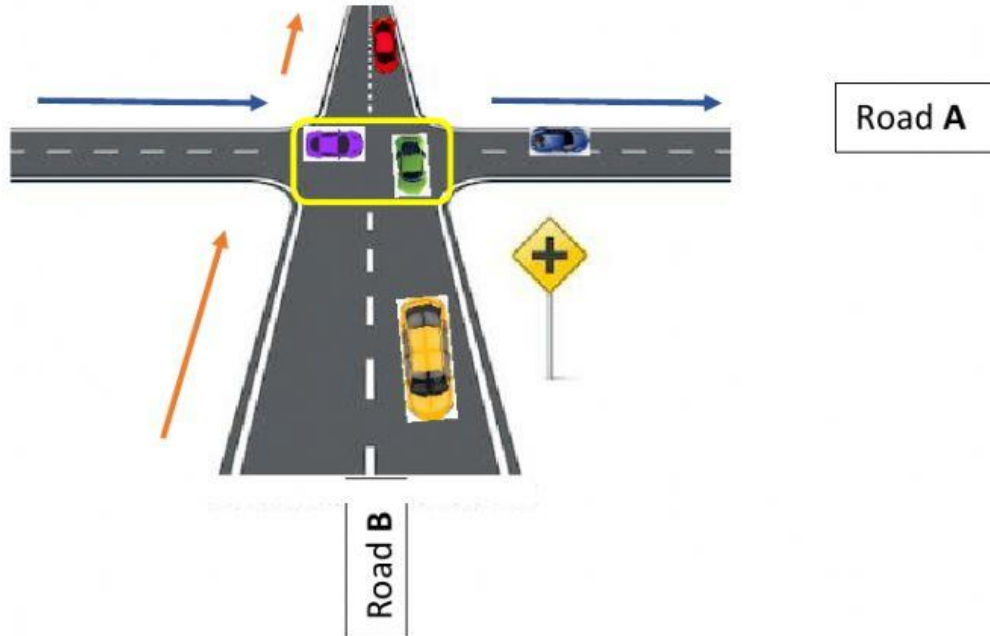


Intersection and Union of Sets

Watch the video posted in Google classroom and/or WhatsApp. Then look at the **picture showing cars** on the **road** network, labelled **Road A** and **Road B**. Use information to answer the questions below.



We are focusing three (3) section of the two (2) roads above: **Road A**, **Road B** and **where Road A and B meets (centre)**

1. Which colour cars are on Road **A**?

2. Which colour cars are on Road **B**?

3. Which colour cars are at the centre of Road **A** and **B**? (in the yellow box)

4. In Set A below, write ALL the colour cars that are on Road **A**.
 $A = \{ \hspace{10em} \}$
5. In Set B below, write ALL the colour cars that are on Road **B**.
 $B = \{ \hspace{10em} \}$
6. What is $A \cap B$?
 $A \cap B = \{ \hspace{10em} \}$
7. What is $A \cup B$?
 $A \cup B = \{ \hspace{10em} \}$