

Human Digestive system - Test

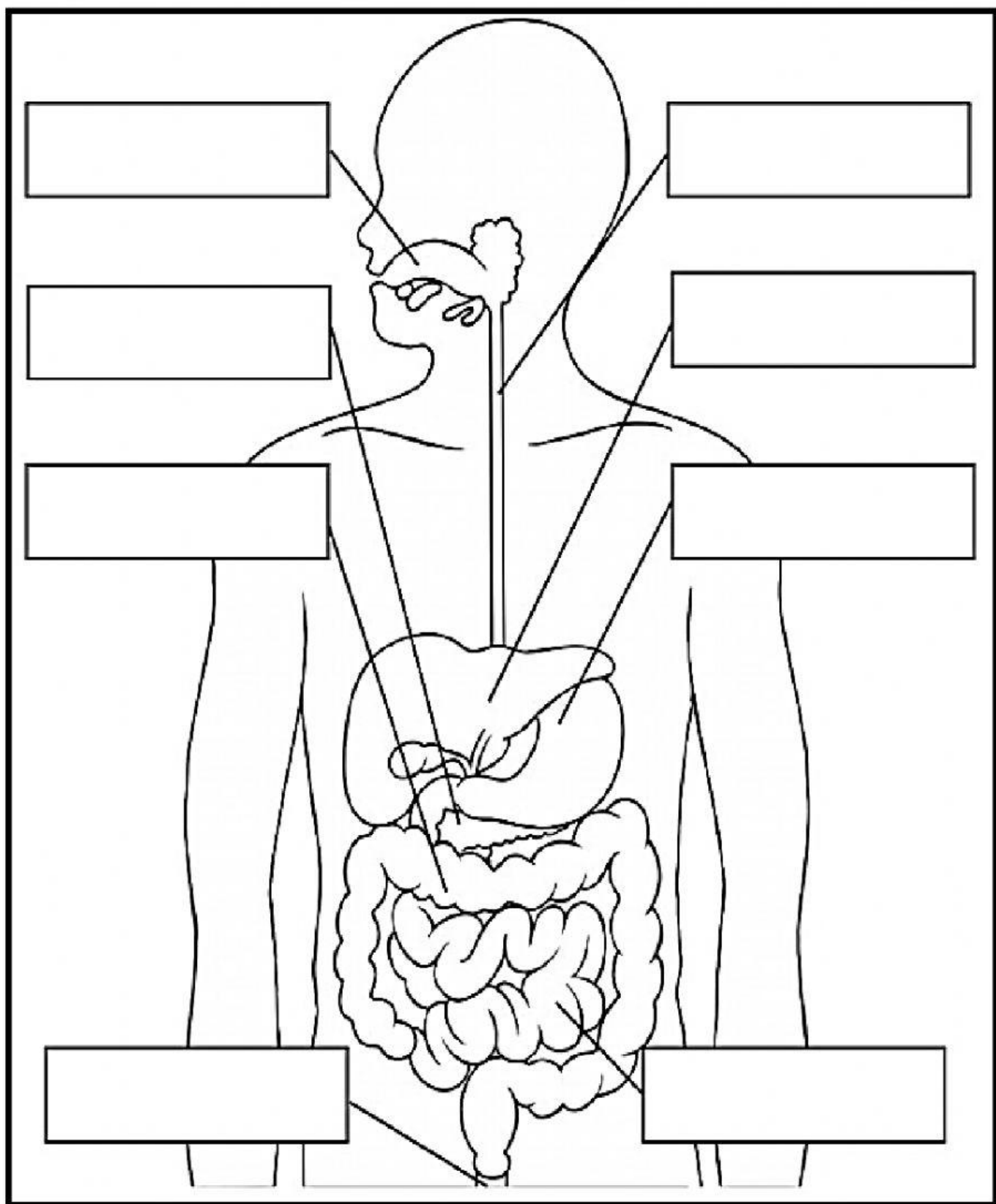
Section A : Choose the correct answer.

1. Your body obtains raw materials from food by the process of _____?
 - A. Digestive system
 - B. Digestion
 - C. Mouth
 - D. Saliva
2. Which of the following do we get from our food?
 - A. Power
 - B. Energy
 - C. Volts
 - D. Amps
3. What do enzymes do?
 - A. Cool down hot food
 - B. Separate meat from vegetables
 - C. Help break down your food
 - D. Help you convert oxygen to water
4. Why do we need to break apart the food we eat?
 - A. So it can fit to our stomach.
 - B. So our bodies can use the nutrients from food.
 - C. So liquids can be separated by solids.
 - D. So that the body have something to do.
5. What is the liquid in your mouth called?
 - A. Tongue
 - B. Oesophagus
 - C. Bile
 - D. Saliva
6. Saliva contains chemicals that change starch into _____.
 - A. Sugar
 - B. Fats
 - C. Proteins
 - D. Bile
7. Before the stomach the food travels down through the ...
 - A. Oesophagus
 - B. Duodenum
 - C. Arteries
 - D. Lungs

8. In which organ does peristalsis occur?
- A. Oesophagus
 - B. Small intestine
 - C. Large intestine
 - D. All of the above
9. Which of the following is NOT found inside of the stomach?
- A. Acid
 - B. Chyme
 - C. Enzymes
 - D. Bile
10. Acid in your stomach activates enzymes that start digestion. What else does it do?
- A. Keeps you hydrated
 - B. Converts carbohydrates to simple sugars
 - C. Cools you down
 - D. Kills bacteria
11. Which organ is NOT part of the digestive system?
- A. Stomach
 - B. Kidney
 - C. Rectum
 - D. Gall bladder
12. Which organ is not part of the alimentary canal?
- A. Oesophagus
 - B. Liver
 - C. Stomach
 - D. Small intestine
13. Bile is produced in the...
- A. Gall bladder
 - B. Duodenum
 - C. Liver
 - D. Pancreas
14. Peristalsis is responsible for...
- A. Blindness
 - B. Pushing food along the gut
 - C. Migraines
 - D. Nausea

Section B : Name the parts of alimentary canal and its associated organs.

(Reminder : The spelling of the parts should be correctly name)



Section C : Match the parts of alimentary canals and the organs with their functions.

| | |
|-----------------|---|
| Mouth | Holds the food to be broken up by the Hydrochloric acid. The acid also kills the present of bacteria. |
| Oesophagus | Food travels through this wider tube and becomes waste. It is stored in the rectum. |
| Stomach | Food is chewed and mixed with saliva. The saliva contains the enzyme amylase. |
| Liver | Produces bile which aids the digestion of fats. |
| Gall bladder | Food travels through this skinnier tube while the nutrients (the digested food of proteins, carbohydrates and fat) are being absorbed into the bloodstream. |
| Small intestine | Stores bile and releases bile into the small intestine. It also help the body to get rid of toxins. |
| Large intestine | The tube that carries food into the stomach by peristalsis process. |
| Anus | Where the undigested food from the rectum exits through. |