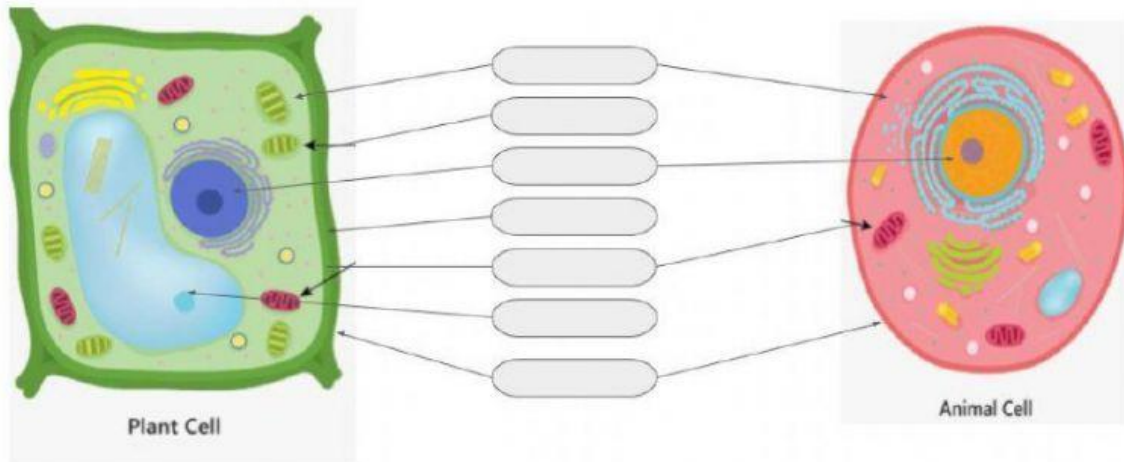


1. Complete the labeling of the cells.



2. Complete the blank parts.

- \_\_\_\_\_; contains the genetic material called, \_\_\_\_\_, that enables the cell to perform its living functions & divide to form \_\_\_\_\_.
- Chloroplast: it is where the process of \_\_\_\_\_ in plant cells occur. Contain \_\_\_\_\_, that is \_\_\_\_\_ in colour.
- \_\_\_\_\_; are small structures where the process of respiration occurs. During respiration, \_\_\_\_\_ is released from food & used for \_\_\_\_\_.
- \_\_\_\_\_; is a jelly like substance surrounding the \_\_\_\_\_ structures of the cell. It transports \_\_\_\_\_ around the cell & it is where the cell's \_\_\_\_\_ are broken down.
- Cell wall: is a \_\_\_\_\_ on the outside of the cell. It \_\_\_\_\_ the cell & gives it \_\_\_\_\_ & also allow \_\_\_\_\_ & fluids to pass through it.
- Cell membrane: is the \_\_\_\_\_ structure of the cell. It allows only some \_\_\_\_\_ to pass through it.
- \_\_\_\_\_; present in both plant & animal cells. It is storage space that contain \_\_\_\_\_ surrounded by a \_\_\_\_\_.

