

# Electricity

Electricity is a type of energy. Energy makes things work. We use electricity to make machines work. We use electric machines in our homes, schools, and offices.



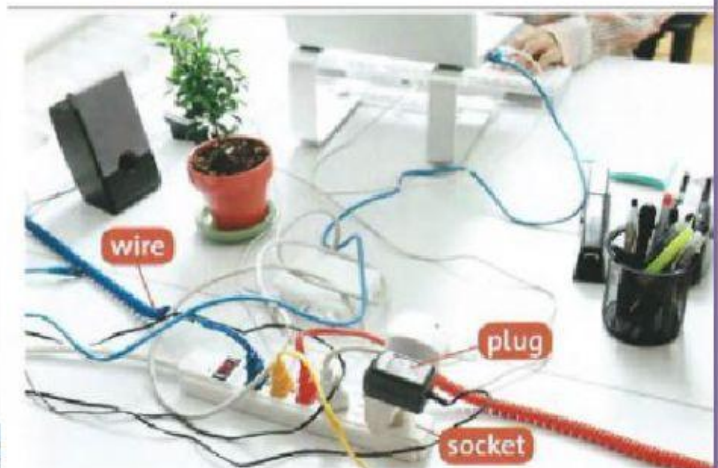
We can use electricity in trains, cars, and some buses, too!

Electric machines help us to do many things in the kitchen. We use a kettle to make water hot. We use a refrigerator to keep our food cold, and we use a stove to cook our food. We use a washing machine to wash our clothes, and we use a dishwasher to wash our dishes.

## 1. TRADUCIR EL TEXTO.

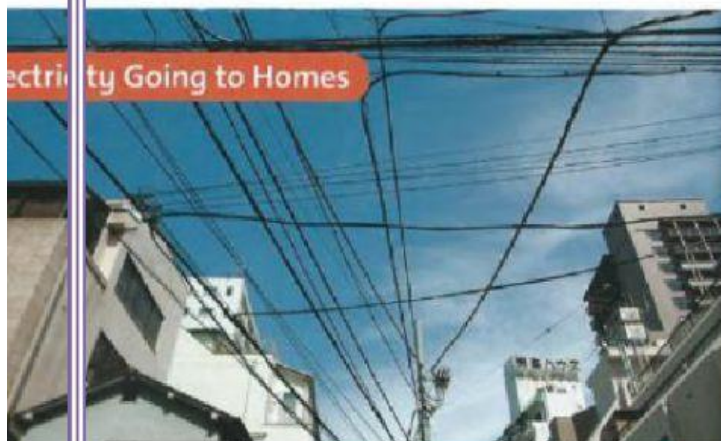
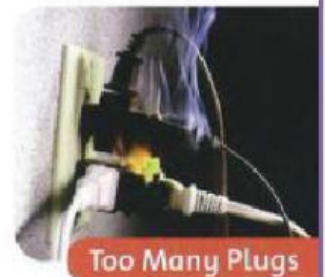
## How We Get Electricity

We use lots of electricity in our homes. Electricity moves from power stations to our homes. How does it get there? Electricity moves in wires. The wires take electricity from a power station. The wires take electricity to our homes, schools, and offices, too. Then we can use it.



Wires take electricity to sockets. We put a plug in a socket to use electricity. Electricity goes from the socket to the plug. Wires take electricity from the plug to electric machines.

It's bad to put too many plugs in one socket. The socket can get too hot and burn.



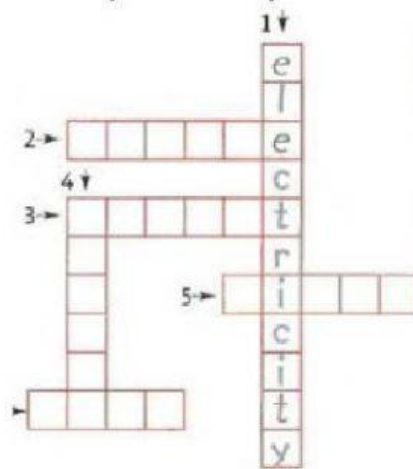
## ELECTRICITY

### 1. COMPLETE THE SENTENCES.

1. Electricity is a type of \_\_\_\_\_.
2. Energy makes things \_\_\_\_\_.
3. We use \_\_\_\_\_ to make machines work.
4. We use electric \_\_\_\_\_ in our homes.

### HOW WE GET ELECTRICITY

### 3. Complete the puzzle.



### 4. Write *true* or *false*.

- 1 Electricity moves in wires. \_\_\_\_\_
- 2 Wires take electricity from a power station. \_\_\_\_\_
- 3 Wires take wind to our homes, schools, and offices. \_\_\_\_\_

4.

### Answer the questions.

- 1 Where do we put a plug to use electricity?

\_\_\_\_\_

- 2 What do wires do?

\_\_\_\_\_

- 3 How many plugs can we put in a socket?

\_\_\_\_\_

- 4 When can a socket get too hot and burn?

\_\_\_\_\_