

Sewing Tool Identification

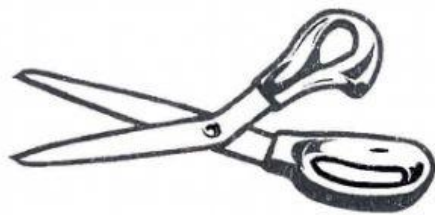
Name: _____

Hour: _____

GOAL: ...recognize names of sewing equipment.
...outline safety practices to follow when working in sewing lab.

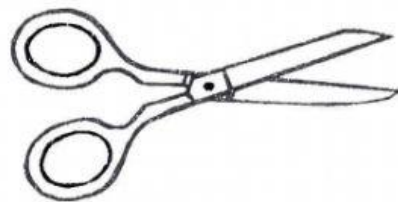
DIRECTIONS: Fill in names of sewing equipment using the word bank below.

Hand Sewing Needles	Marking Pencil	Pin Cushion
Pinking Shears	Sewing Gauge	Pressing Ham
Seam Ripper	Scissors	Tape Measure
Straight Pins	Tailors chalk	Thimble
Tracing Paper	Tracing Wheel	
Shears	Seam Roll	



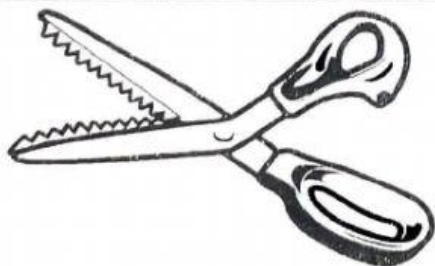
Heavy Duty cutting of fabric.
One handle larger than other.

1.



Used to trim threads.
Two handles same size.

2.



Cuts a zig-zag edge to prevent
raveling. Makes a seam finish.

3.



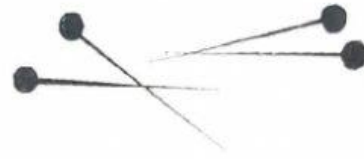
Protects your finger when
hand sewing.

4.



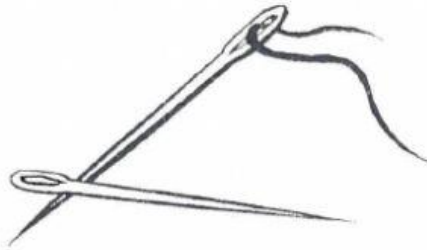
Stores pins, filled with sawdust which sharpens pins.

5.



Used to hold pattern to fabric or 2 layers of fabric. Must lay flat on fabric.

6.



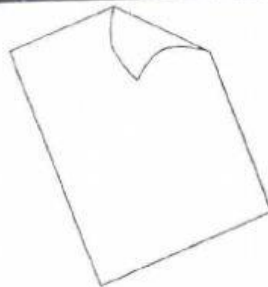
Different sizes and lengths. Used to sew by hand.

7.



Chalk-filled pencil - makes temporary marks on fabric.

8.



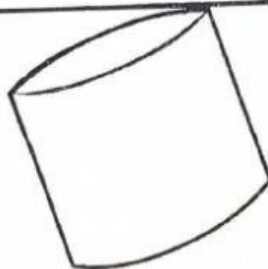
Waxy coated paper which transfers pattern markings.

9.



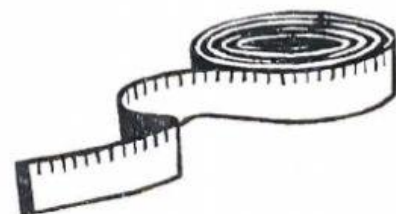
Handle & metal wheel with teeth, used with tracing.

10.



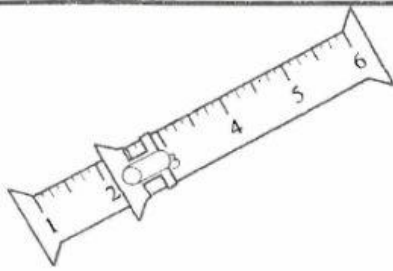
Square of chalk, makes temporary marks on fabric.

11.



60" long, takes pattern or body measurements.

12.



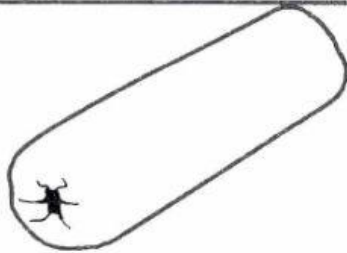
6" long with slide, helps you mark
a hem or smaller amounts.

13.



Takes out sewing mistakes.

14.



Helps press seams in tubes – like
sleeves. Looks like a sausage.

15.



Press curved areas.
Looks like a ham!

16.