

Centreville Primary School

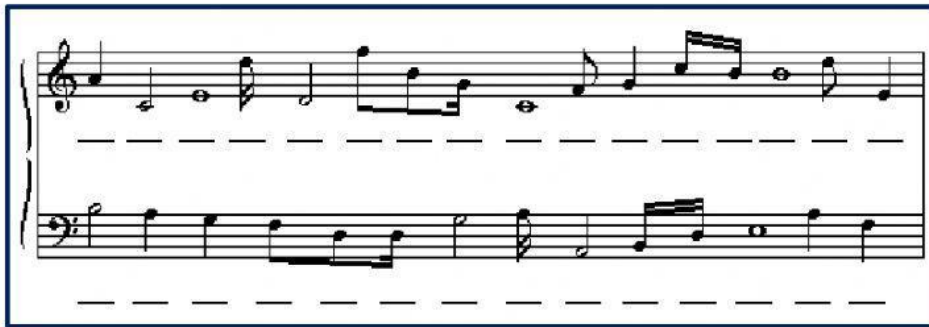
Music

Bass Clef & The Grand Staff

Worksheet

1. How many staves are apart of a typical grand staff?
a) 3 b) 2 c) 1
2. Which of the following instrument uses a grand staff?
a) piano b) flute c) xylophone
3. What is the name of the musical symbol that combines the staves?
a) bar b) measure c) brace
4. Are the bar lines usually joined vertically on a grand staff?
a) yes b) no c) sometimes
5. Music written in the bass clef are played with which hand?
a) right b) left c) both

Use the sheet music to answer the following questions.



1. What letter is the first note of the treble clef staff? _____
2. What letter is the last note of the bass clef staff? _____
3. Does this sheet music show a key signature? {YES} or {NO}

Use the word list to complete the diagram.

treble clef	measure	bass clef
bar line	brace	staff

Grand Staff

