

MASS

banana - 150 - 200 grams
apple - 100 grams
exercise book - 80 grams
glue stick is 35 grams
1 piece of paper - 1 gram
1 pencil - 5 grams
packet of cornflakes - 500 grams
bag of rice - 1 kg
1 litre of water - 1 kg
mass of a cat - 4kg
mass of guinea pig - 1kg
mass of a tea bag - 2 grams



mass = weight

Mass is measured using scales.

We use

- milligrams (mg)
- grams (g)

a grain of sugar = 1 mg

a thumbtack = 1 gram

a bag of rice = 1 kg

1 1/2 loaves of bread = 1 kg

Mr Wallace has a mass of 88 kg

1000 mg = 1 gram

1000 g = 1 KG

Mark the correct answer with a X

What is the best estimate for the mass of an biscuit?

80 kg 80 mg 80 g 80 L

What is the best estimate for the mass of a school bag?

2 kg 2 mg 2 g 2 m

What is the best estimate for the mass of a small notebook?

10 kg 10 mg 10 g 10 cm

What is the best estimate for the mass of a raffle ticket?

10 kg 10 mg 10 g 10 cm

What is the best estimate for the mass of a rabbit?

1.5 kg 1.5 mg 1.5 g 1.5 m

What is the most appropriate unit to measure the length of a rope?

M KG L M²

What is the most appropriate unit to measure a bag of sugar in?

ml

g

cm

cm²

What is the most appropriate unit to measure a width of book in?

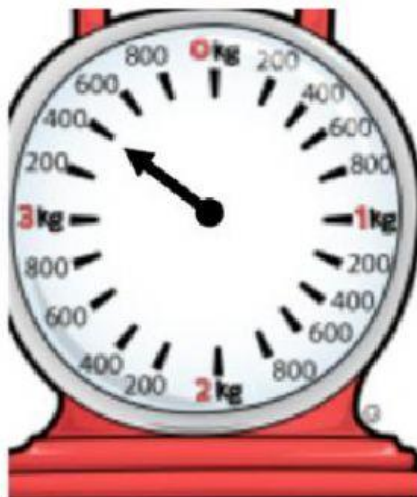
mm

mg

ml

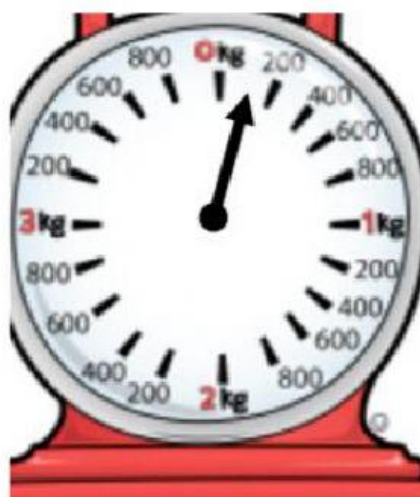
mm²

What mass is shown on the scales in **grams and kilograms**



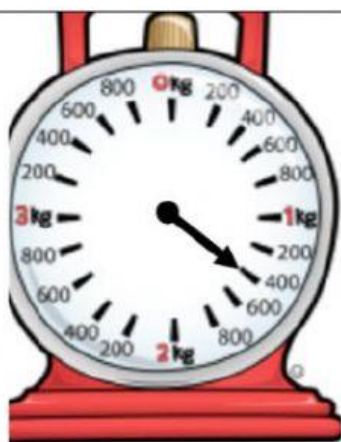
g

kg



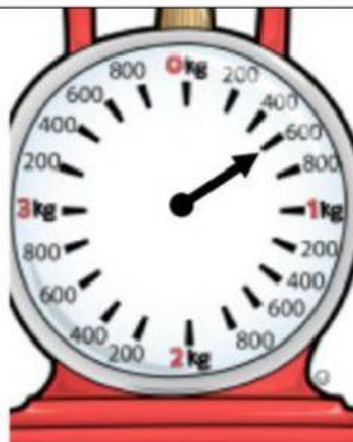
g

kg



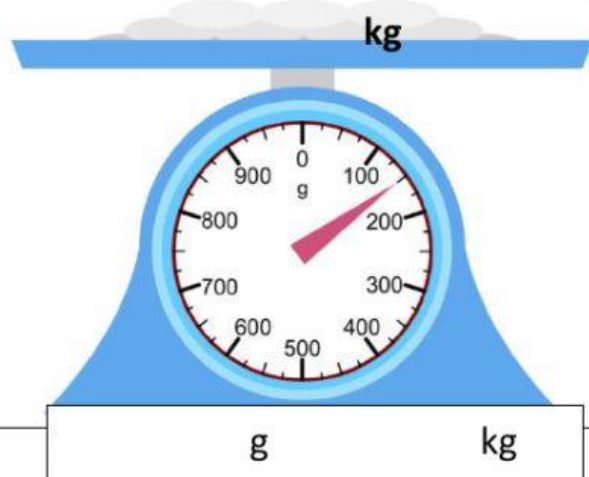
g

kg



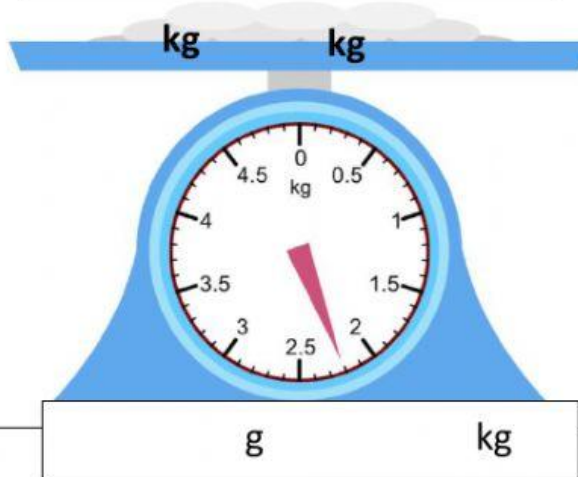
g

kg



g

kg



g

kg