

5.18 Intraplate Activity

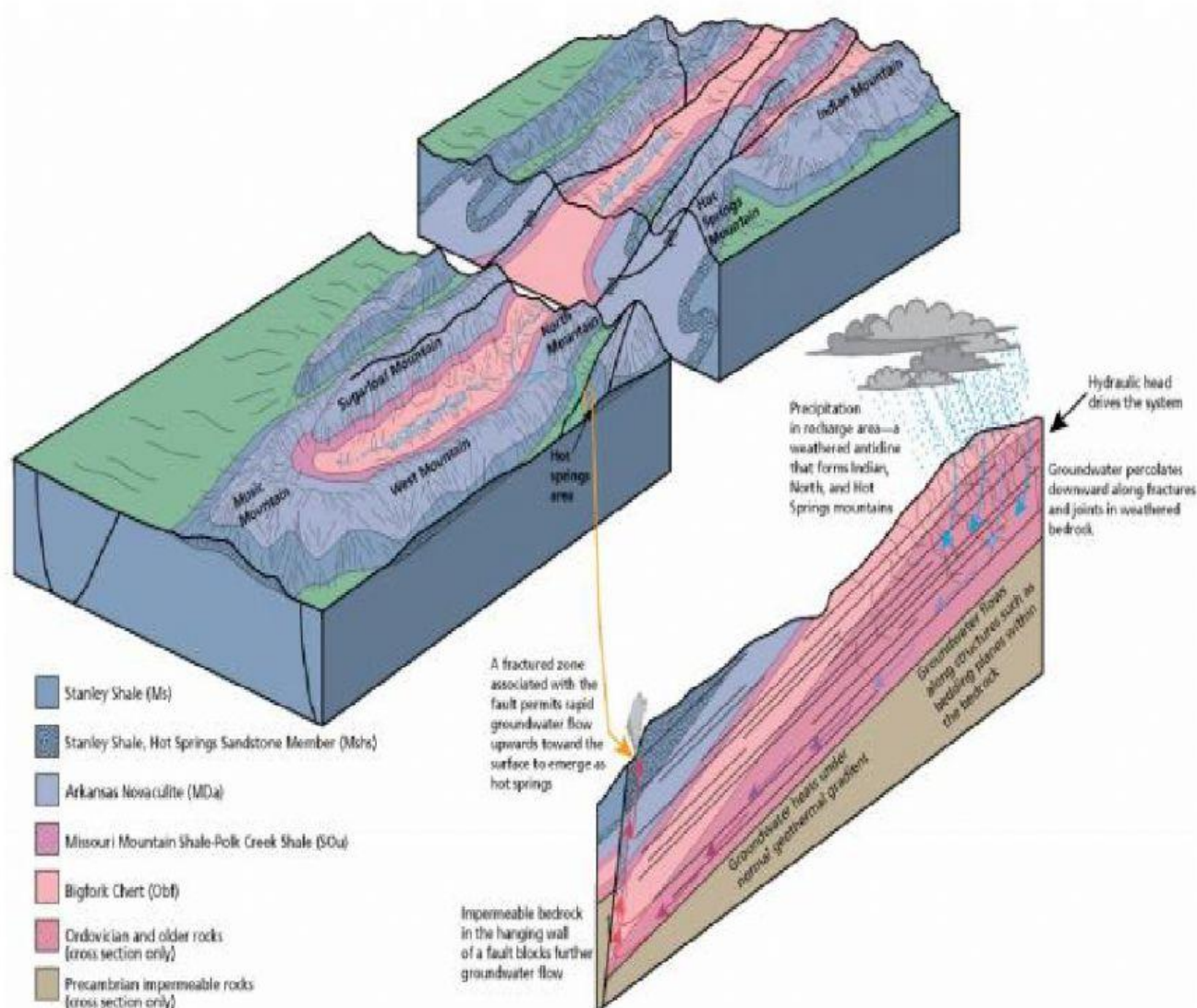
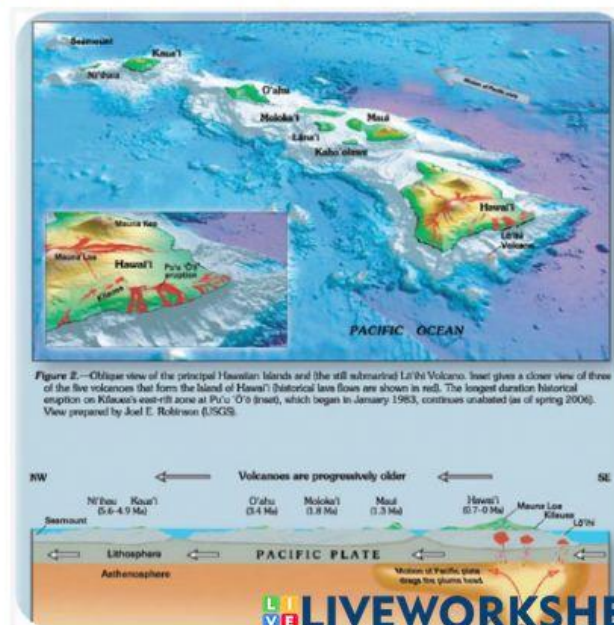
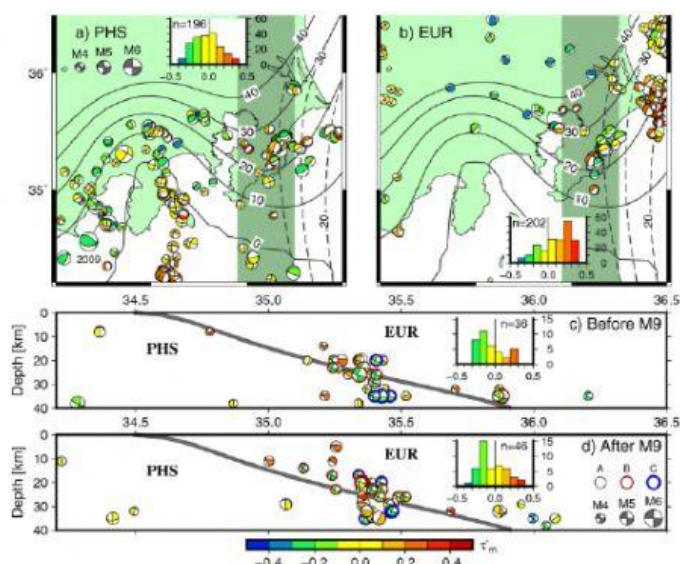
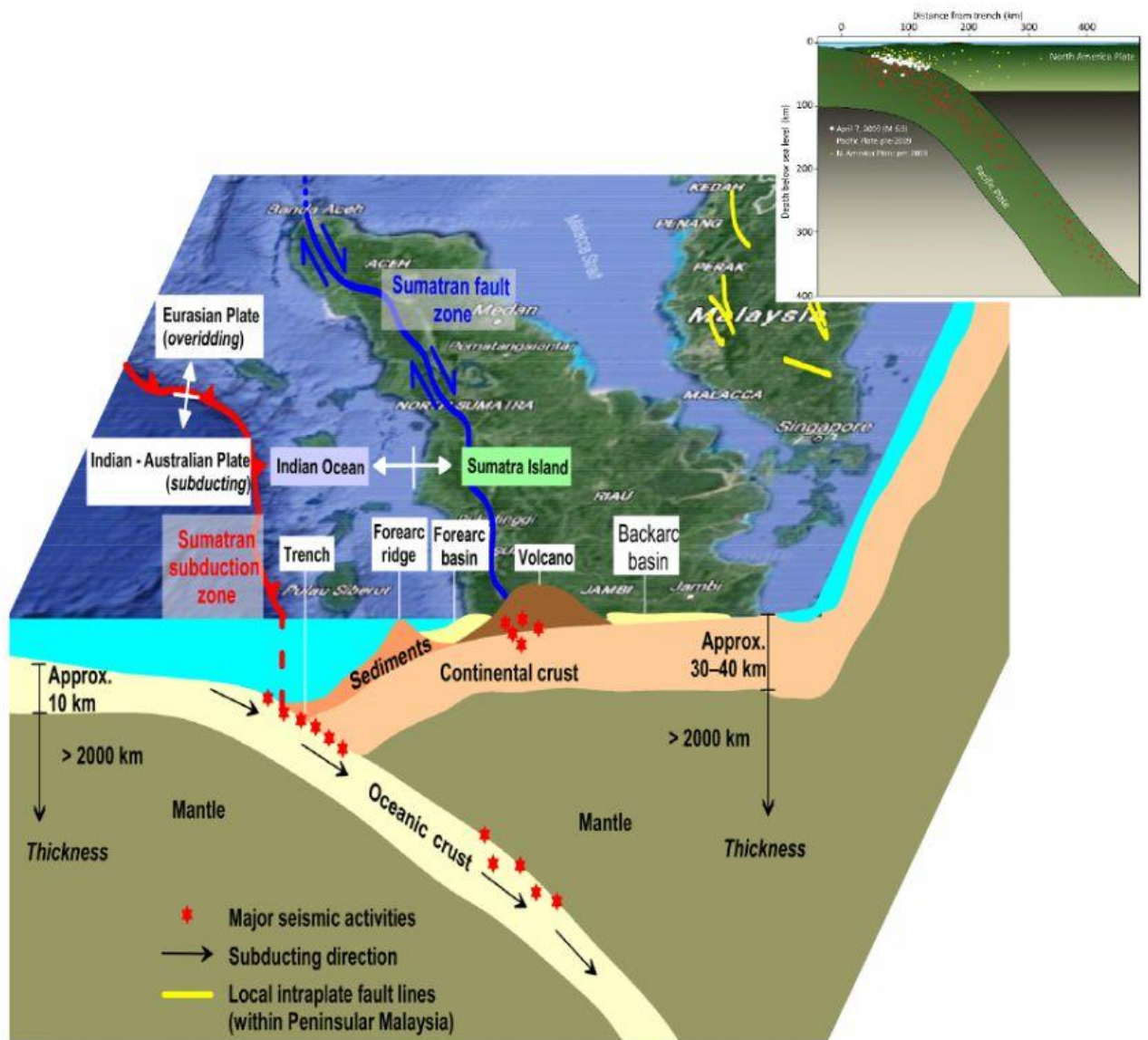


Figure 8. Cross section through Hot Springs Mountain and adjacent hills. Surface exposures of the Stanley Shale (Ms) are tinted green for clarity. Other colors are standard USGS colors. Bold black lines are faults. Geologic structures control the thermal water system that supplies the hot springs at Hot Springs National Park. Graphic by Trista L. Thornberry-Ehrlich (Colorado State University) after an unnumbered figure in Bedinger (1974).





1. What is a hotspot?
2. How do scientists use hotspot volcanism to tell the direction and speed of a plate?
3. Compare and contrast hotspots in the oceans and on continents.