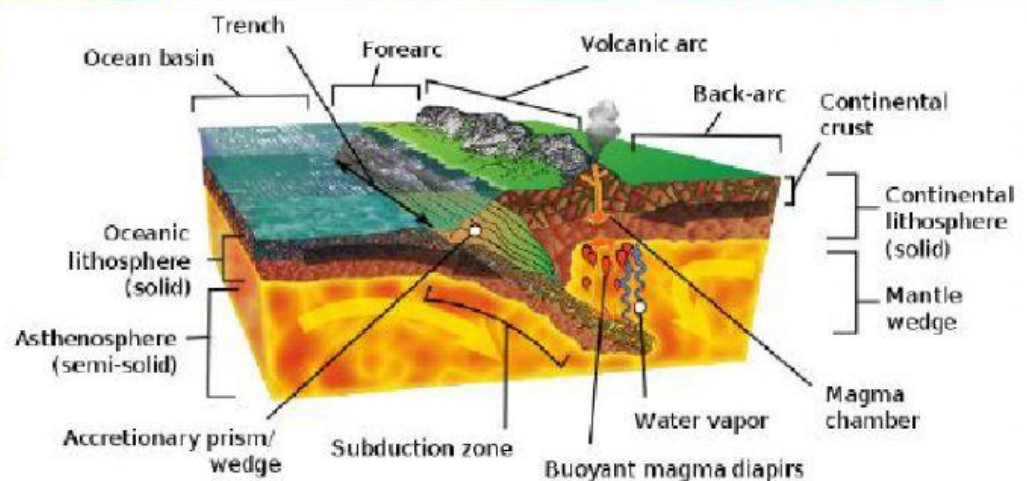
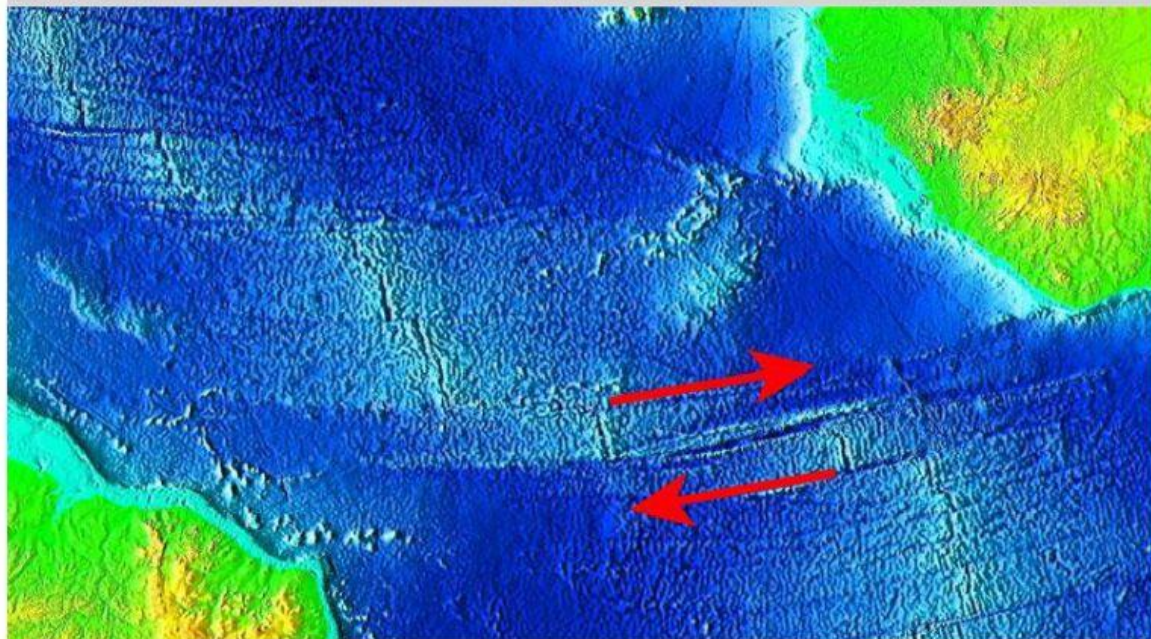
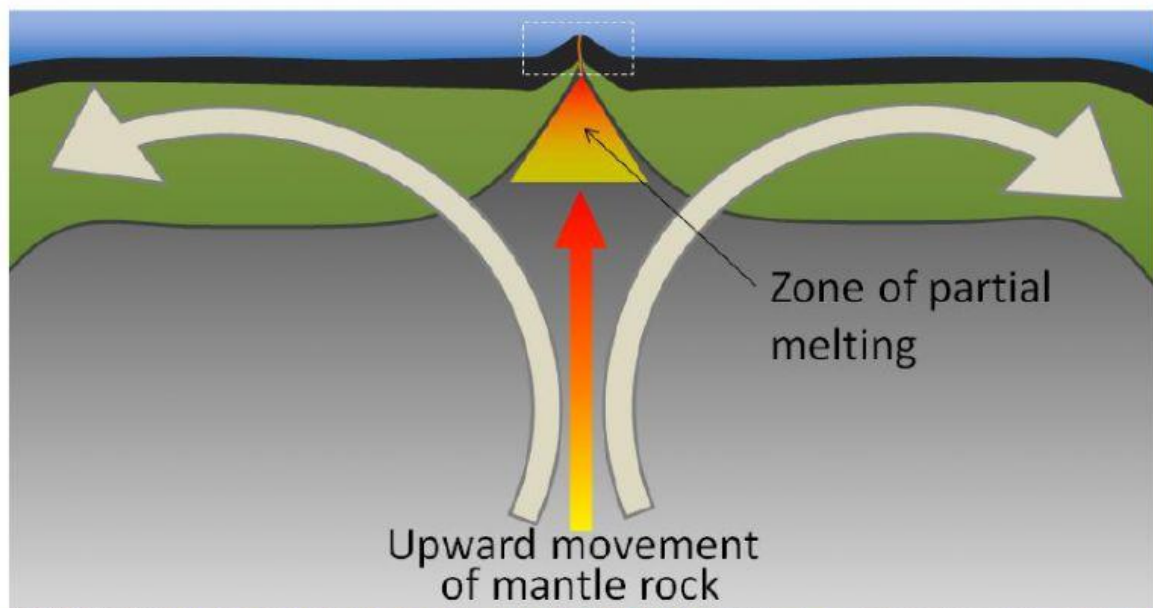


### 5.15 Continent-Continent Convergent Plate Boundaries



1. Compare and contrast these two types of convergent plate boundaries:  
(1) continent-continent, and (2) ocean-continent.

(1) continent-continent,	(2) ocean-continent.

2. What causes mountain ranges to rise at convergent plate boundaries?

3. How did the Appalachian Mountains form?

1. What two types of plates come together at continent-continent convergent plate boundaries?

2. Which plate sinks into the mantle? What is the result of this?

3. What are two examples of this type of plate boundary?

4. At what type of plate boundary are the highest peaks on Earth located?

5. Where is the continental crust thickest on Earth?