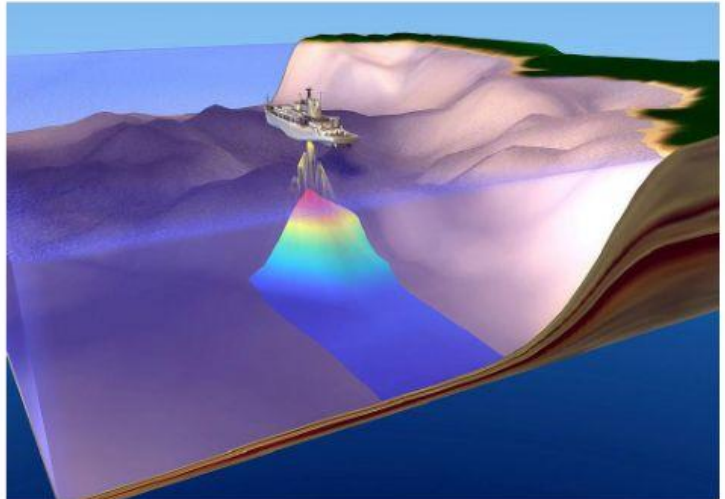
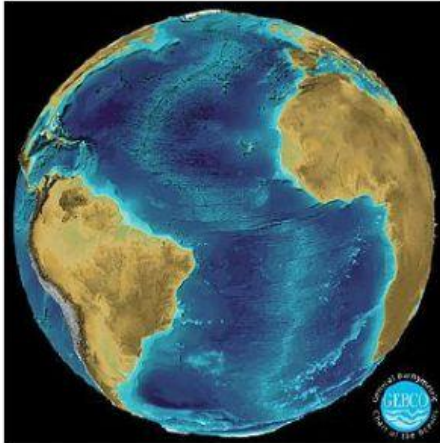
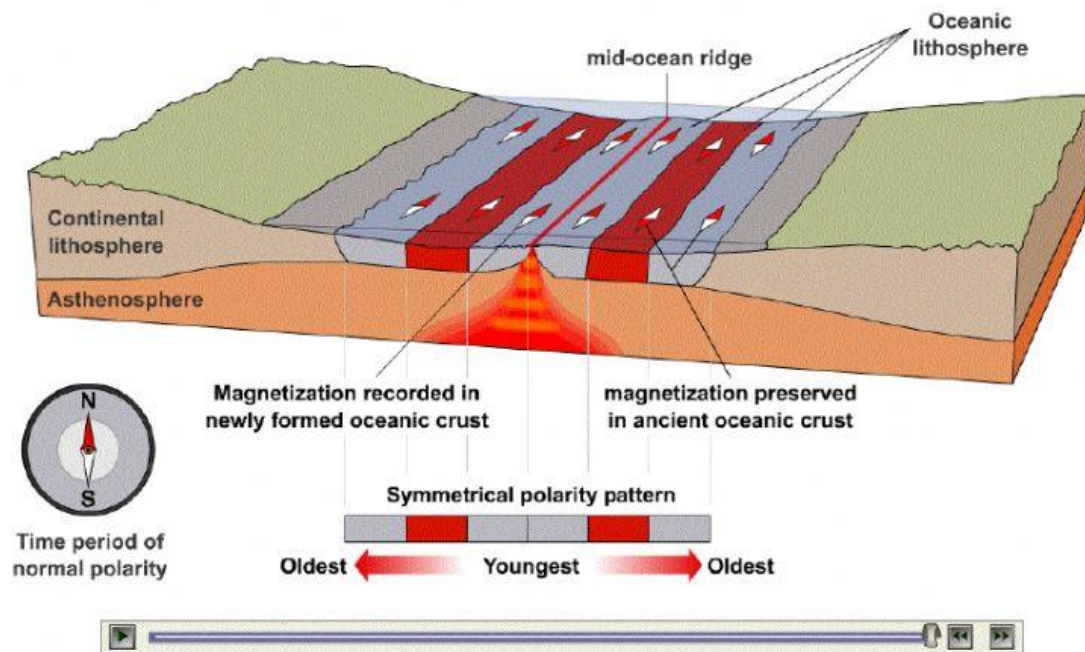


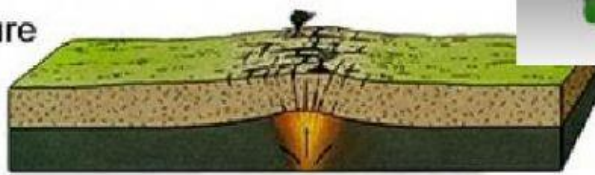
5.5 5.6 Seafloor Spreading Hypothesis



Sea-floor spreading and sea-floor magnetization



A. Rupture



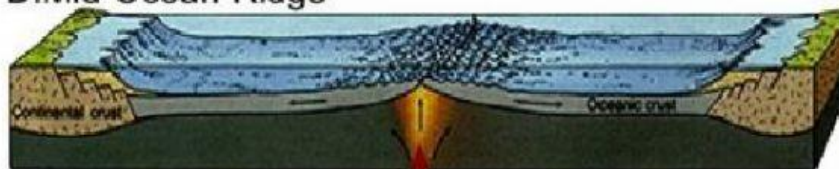
B. Rifting



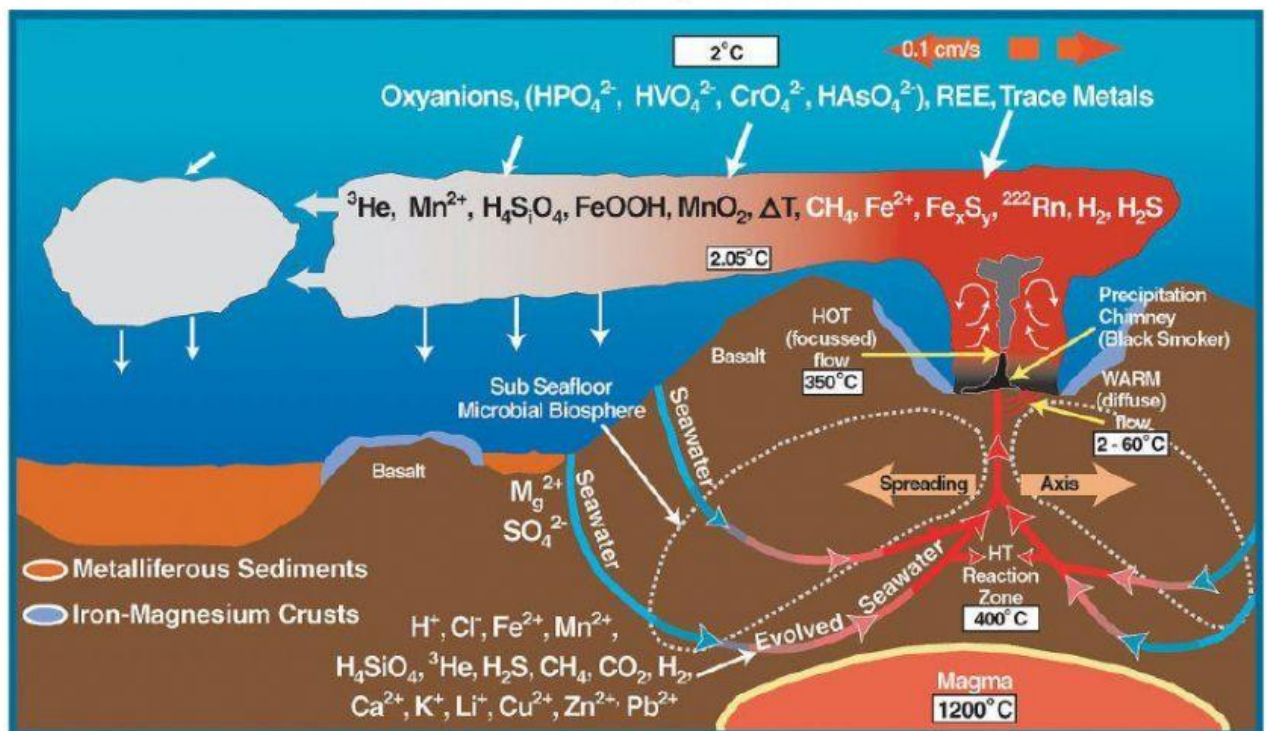
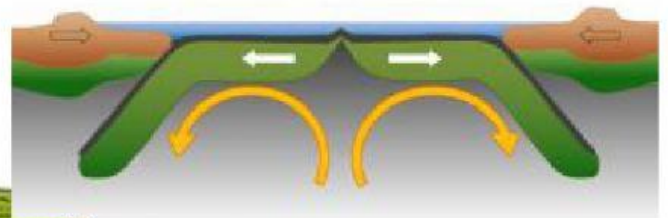
C. Spreading

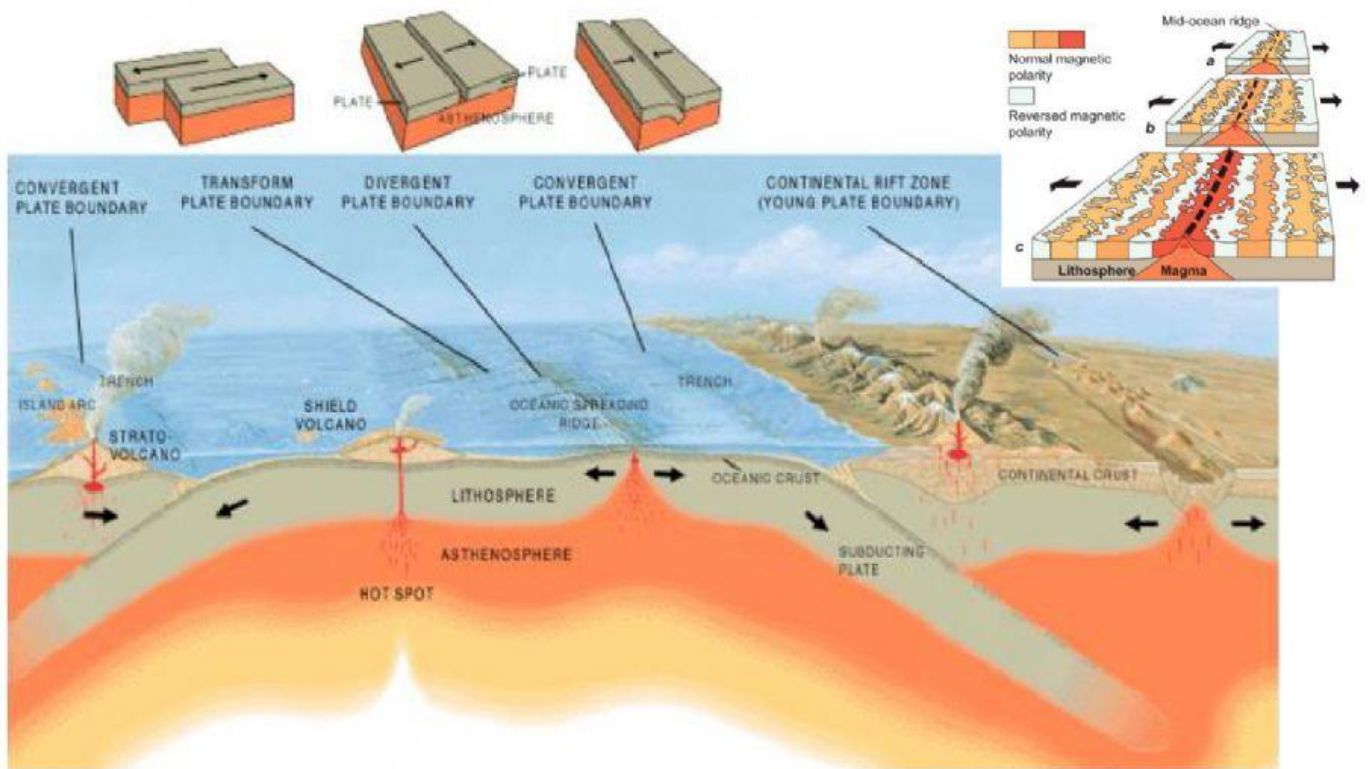


D. Mid-Ocean-Ridge



Mid-Ocean-Ridge Spreading Axis





1. How does the pattern of magnetic stripes give evidence for seafloor spreading?

2. How does the topography of the seafloor give evidence for seafloor spreading?

3. How does seafloor spreading fit into the idea that continents move about on Earth's surface?