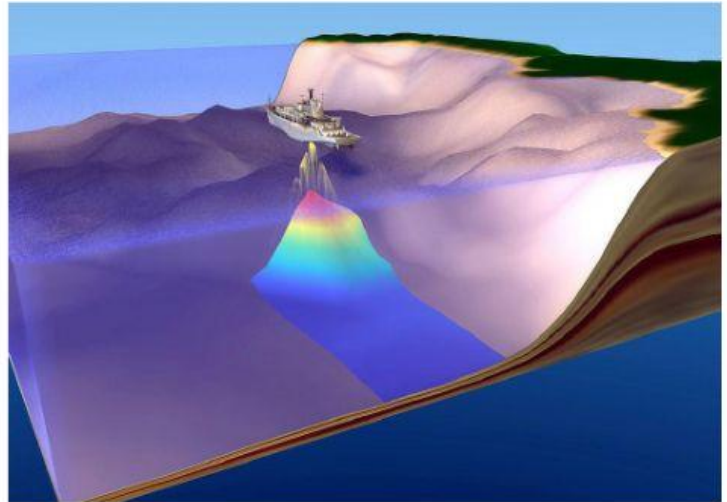
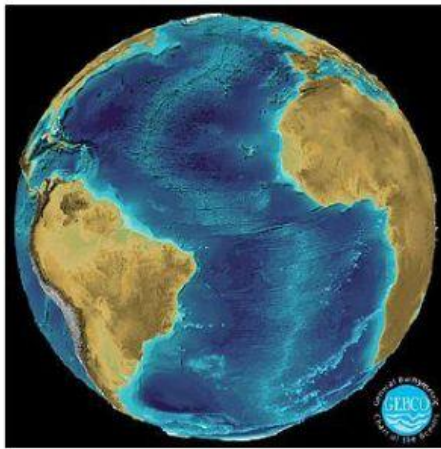
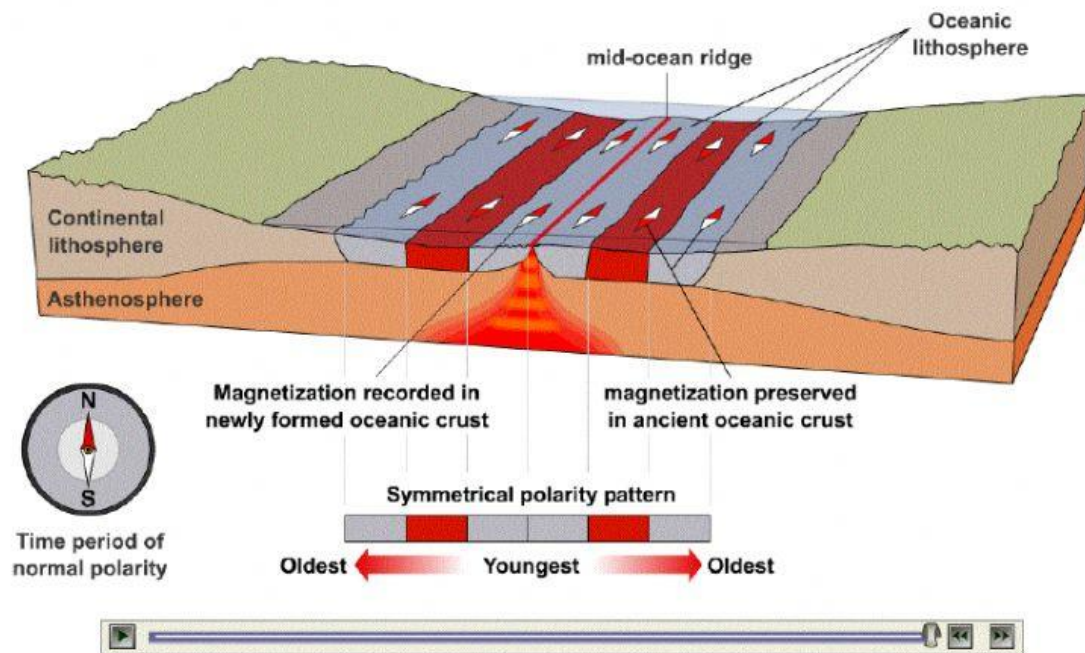


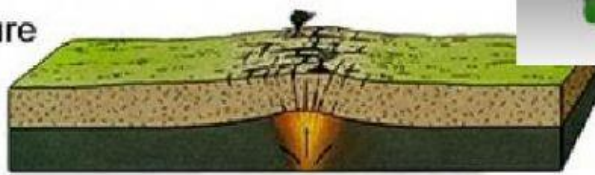
5.4 Bathymetric Evidence for Seafloor Spreading



Sea-floor spreading and sea-floor magnetization



A. Rupture



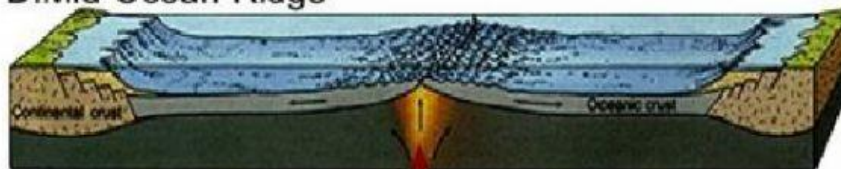
B. Rifting



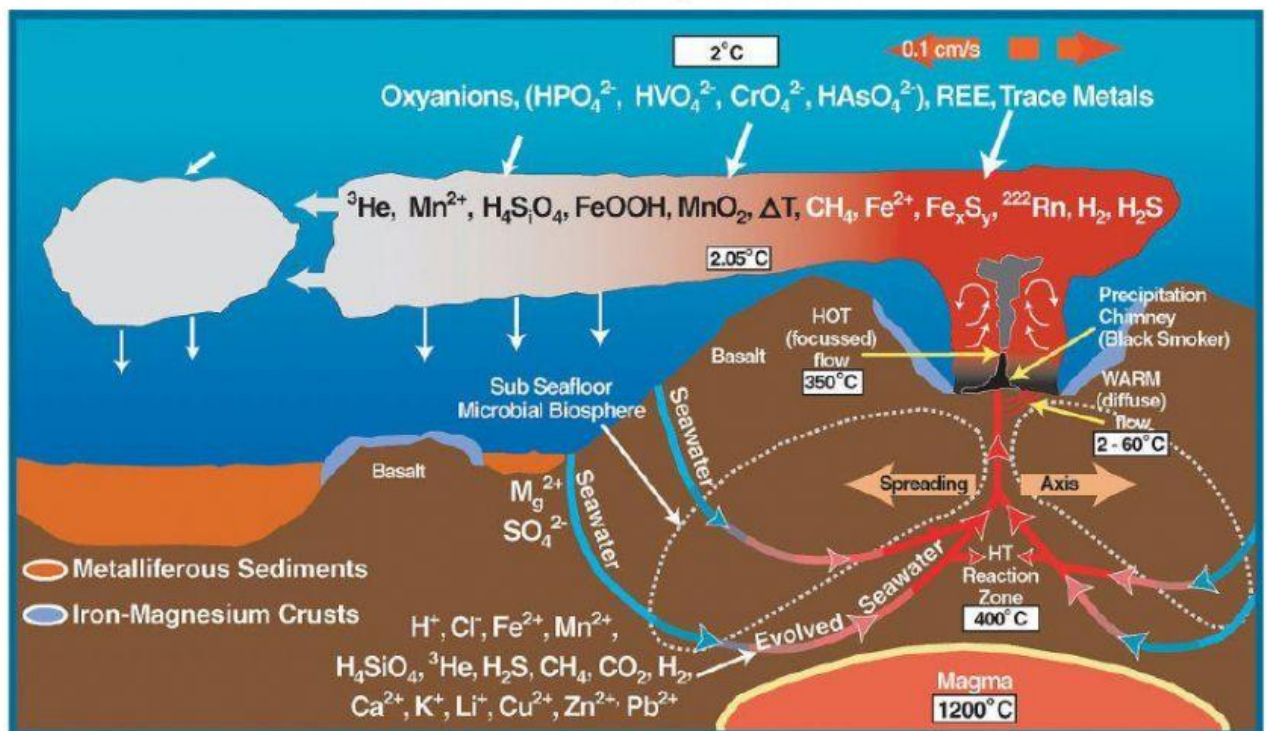
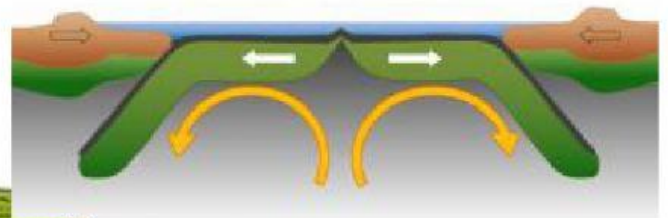
C. Spreading

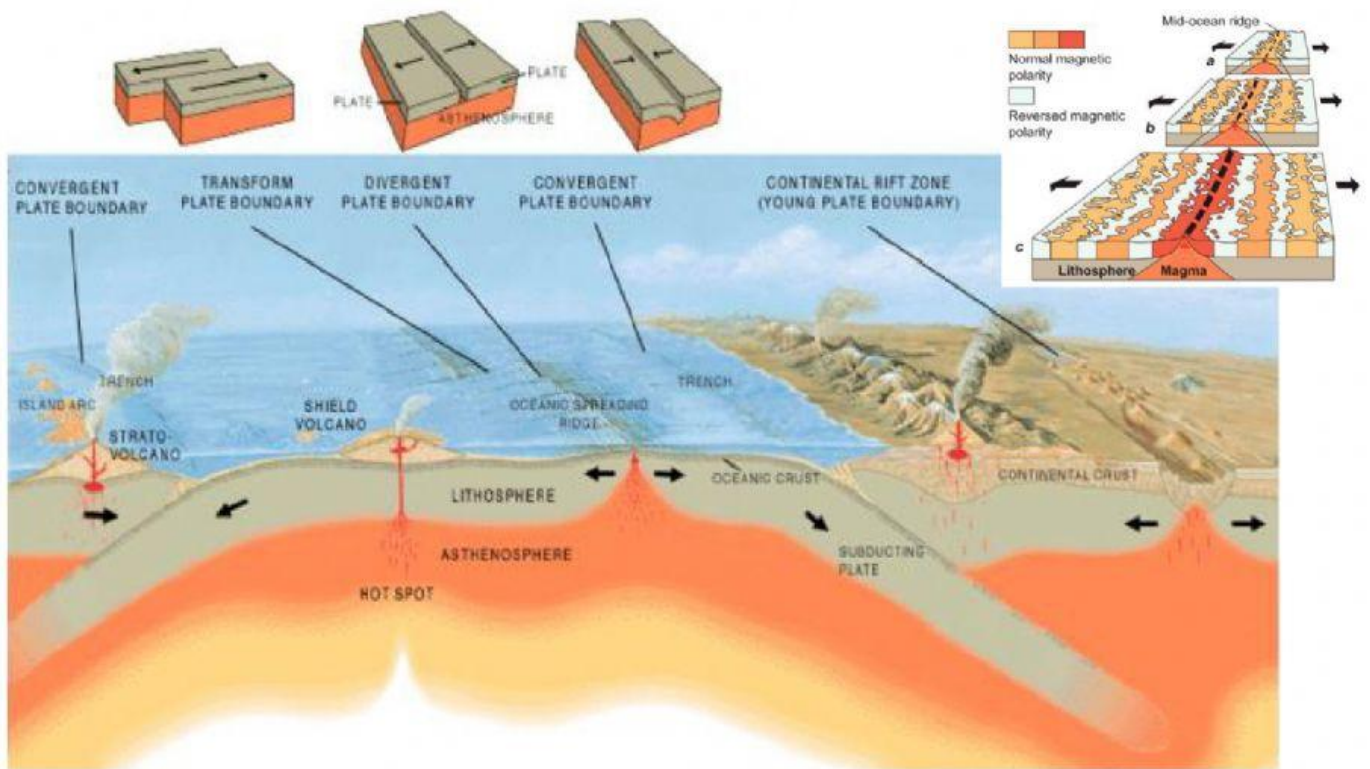


D. Mid-Ocean-Ridge



Mid-Ocean-Ridge Spreading Axis





1. How does an echo sounder create a bathymetric map?
2. What are the features of the seafloor that are elevated?
3. What are the features of the seafloor that are very deep?

1. What did Henry Hess use his sonar for?
2. What did Hess discover?
3. What was discovered in 1953?
4. What did Hess discover was occurring at the ridge?
5. What did Hess call his discovery?

6. What process recycles the crust?