

## Exam listening

## Section 2

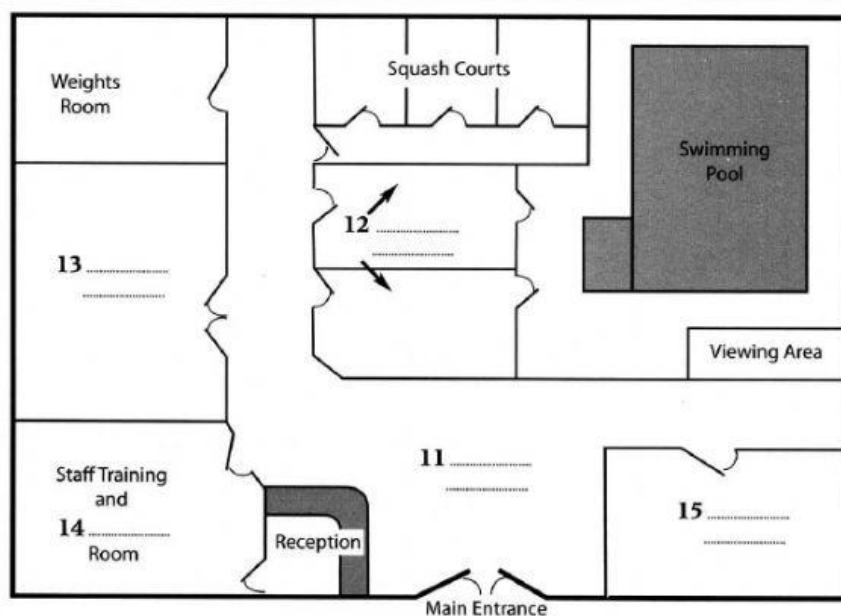
2.23

Questions 11–15

Label the plan below.

Write **NO MORE THAN TWO WORDS** for each answer.

Sport halls  
Changing rooms  
Cafe Lounge  
First Aid  
Meeting Point



2.24

Questions 16–20

Complete the table below.

Write **NO MORE THAN THREE WORDS AND/OR A NUMBER** for each answer.

Membership type	Cost	Access	Additional benefits
Anytime	16 .....	Any time between 5 a.m. and midnight	Access to 17 ..... clubs nationwide.
Freetime	£500	Between 10 a.m. and 3 p.m.	Access to 18 .....
Standard	£400	Same as Freetime, but only 19 .....	None
Children	20 ..... discount	Depends on choice of scheme	Depends on choice of scheme