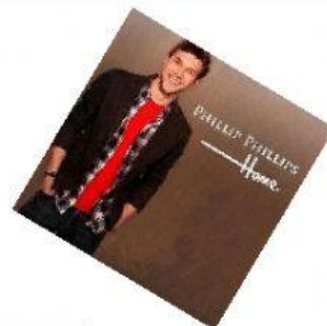


Song: "Home" by Phillip Phillips



- What's a "home" to you?

1. Complete the lyrics with the words from the box.

road	home	alone
is	we	this

Hold on, to me as _____ go
 As we roll down this unfamiliar _____
 And although this wave (wave) _____ stringing us along
 Just know you're not _____
 Cause I'm gonna make _____ place your _____

2. Circle the correct word.

Settle **down** / **up**, it'll all be clear
 Don't pay no **kind** / **mind** to the demons
 They fill you with **fear** / **cheer**
 The **double** / **trouble** it might drag you down
 If you get **lost** / **cost**, you can always be found

3. Put the verses in order. Number them from 1 to 6.

- () Don't pay no mind to the demons
- () 'Cause I'm going to make this place your home
- () They fill you with fear
- () Settle down, it'll all be clear
- () If you get lost, you can always be found
- () Just know you're not alone
- () Just know you're not alone
- () 'Cause I'm going to make this place your home
- () The trouble it might drag you down

4. Match the words with the correct definitions.

- | | |
|-------------------|--------------|
| a) Fear (noun) | () sempre |
| b) Drag (verb) | () medo |
| c) Always (adv) | () sozinho |
| d) Trouble (noun) | () problema |
| e) Alone | () arrastar |