



**I. Fill in the blanks:**

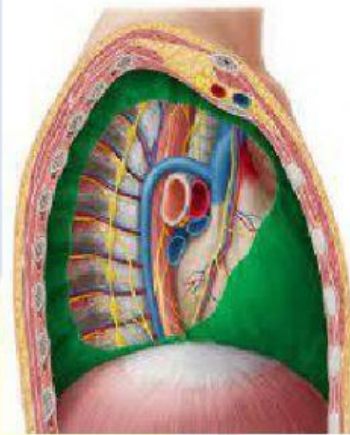
1. The process of taking in air through our nose is Called \_\_\_\_\_.

2. The ribcage reduces space for the lungs in the process of \_\_\_\_\_.

3. Lungs are located on both side of the \_\_\_\_\_.

4. \_\_\_\_\_ cells in blood collect the oxygen and carry it to the rest of the body.

5. When the \_\_\_\_\_ expands, it decreases the space in our chest cavity.



**II. Match the following:**

- |                 |  |
|-----------------|--|
| 1) Nostrills    | Has mucus which moistens the air             |
| 2) Nasal cavity | Connects nasal cavity and the trachea        |
| 3) Pharynx      | Are present in our nose.                     |
| 4) Trachea      | Are located on both side of the chest cavity |
| 5) Lungs        | Is the windpipe                              |
| 6) Alveoli      | Is the muscle which supports lungs           |
| 7) Diaphragm    | Have very thin walls                         |