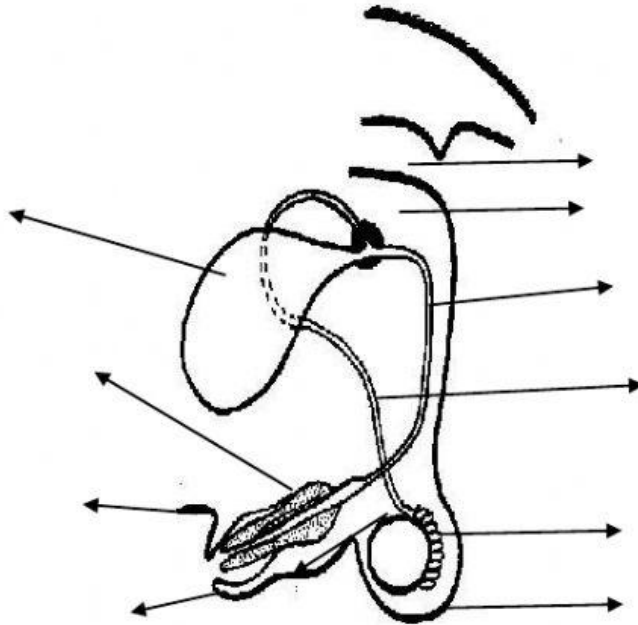


SOLVE THE NEXT ACTIVITIES ABOUT REPRODUCTIVE SYSTEM

**1. ADD THE FOLLOWING LABELS TO THE DIAGRAM OF THE REPRODUCTIVE SYSTEM OF A MALE DOG SHOWN BELOW.**

vas deferens, urethra, testes, penis, scrotal sac, bladder, epididymis, penis bone, glans penis, prostate gland.



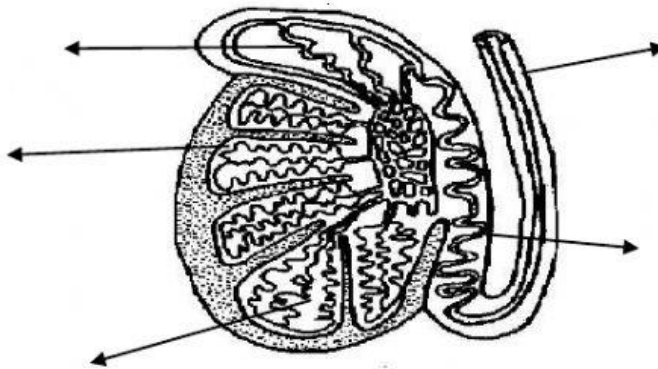
**2. MATCH WITH THE CORRESPONDING DESCRIPTION.**

A. Accessory glands; B. Epididymis; C. Vas deferens (sperm duct); D. Penis; E. Seminiferous tubules; F. Urethra

Structure	Description
.....	1. Organ that delivers semen to the female reproductive tract
.....	2. Where sperm are produced
.....	3. The tube that carries sperm from the epididymis to the urethra.
.....	4. The tube that carries both sperm and urine down the penis.
.....	5. Organs that contribute 90% of the semen.
.....	6. Tubules where sperm are stored.

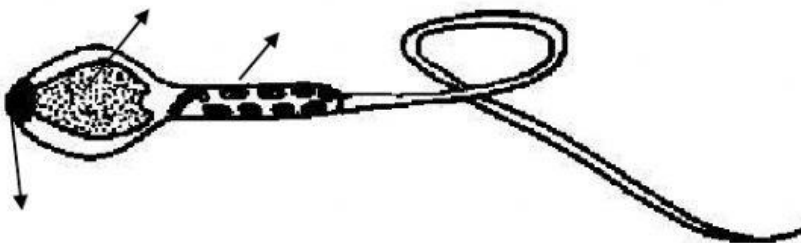
**3. MATCH EACH SECTION THROUGH A TESTIS WITH THE STRUCTURES IN THE DIAGRAM.**

1. Seminiferous tubules in which the sperm are made.
2. Collecting ducts where the sperm are stored.
3. Epididymis in which sperm mature and become motile.
4. Fibrous coat surrounding and protecting the testis.
5. Vas deferens or sperm duct.



**4. MATCH THE DIAGRAM OF THE SPERM WITH THE CORRESPONDING AREA.**

- a) The DNA-containing area.
- b) The enzyme-containing sac that aids sperm penetration of the egg.
- c) The midpiece - contains mitochondria for energy for sperm movement.
- d) The tail – propels the sperm along the female tract.



**5. MATCH EACH WORD WITH THE CORRECT DEFINITION.**

- |                 |  |
|-----------------|--|
| 1.-Sperm        | A) The inability to mate.  |
| 2.- impotence   | B) The fluid produced by the accessory glands<br>Plus the sperm carried. |
| 3.- semen       | C) The inability to conceive and have offspring                          |
| 4.- infertility | D) gametes that carry genetic material ( head,<br>midpiece and tail)     |