

PULSE 2

Listening Activity

Name: _____

Class: _____

Unit 3: Wild Weather

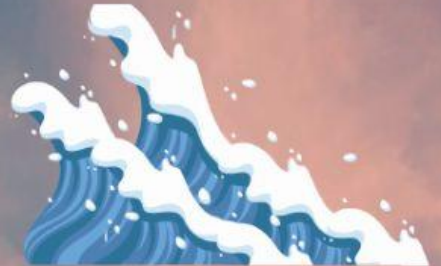


INSTRUCTION

Listen to a TV programme about natural disasters and answer the questions.

1. Which two kinds of disaster often happen near the Pacific Ocean?

- a. Volcanoes and earthquakes
- b. Volcanoes and drought
- c. Drought and earthquakes



2. Why don't we always feel earthquakes?

- a. Because they are insignificant
- b. Because they are too small
- c. Because they cause tsunamis

3. Where do some tsunamis start?

- a. In the middle of the lake
- b. In the middle of the river
- c. In the middle of the sea





4. What can stop a landslide?
- a. Development of city
 - b. Trees
 - c. Build a waterproof shelter

5. What do birds sometimes do before a disaster?

- a. They leave their nests
- b. They stop singing
- c. They search for foods



WORD POWER

- 1. **crashing down**: to fall down or collapse, often noisily
- 2. **occur**: to happen/to take place
- 3. **behave**: to act in proper manner
- 4. **special ability**: an individual's ability in a particular subject
- 5. **disaster**: a sudden incident/natural catastrophe

Natural Disasters QUIZ

What do you know about natural disasters?
Look at the quiz. Are the sentences true or false?

- 1. Most of the world's volcanoes are in Europe.
- 2. There are over 1000 volcanoes in the USA every year.
- 3. An earthquake happens somewhere in the world.
- 4. Landslides can happen because of wildfires.

TRUE / FALSE

TRUE / FALSE

TRUE / FALSE

TRUE / FALSE