

BRIDGE COURSE DIGITAL LESSONS

TOPIC: Cell,Tissues-Structure and Functions
L3(10th class) Biology Plant Tissue Worksheet-2

Student Name:

School Name:

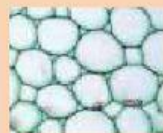
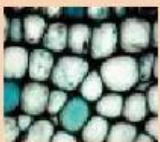
Activity-1: Read the functions given below and write the names of the parts involved in performing the respective function.

Sl.No	Functions	Name of the parts
1	Absorption of water from soil	
2	Exchange of gases (air)	
3	Photosynthesis	
4	Transpiration	
5	Reproduction	

Improve Your Learning:

- Cells in groups which are nearly similar in structure perform similar functions. Such groups of cells are called?
- Tissues that bring about overall growth and repair are called?
- Tissues that help in transport of materials are called as?

4. Choose the Right answer.



5. Join With Arrows:

- | | |
|------------------------|----------------------------------|
| A. Meristematic tissue | Protection |
| B. Xylem | Helps plant to float |
| C. Phloem | Conduction of water and minerals |
| D. Epidermis | Mesodermis |
| E. Apical Meristem | Dividing cells |
| F. Dermal tissue | Transport of food materials |
| G. Aerenchyma | Growing region |

Prepared By: Dusa Santhosh, Zphs Hanmajipet, Rajanna Sircilla.9441731723.