

BUILDINGS & PLACES

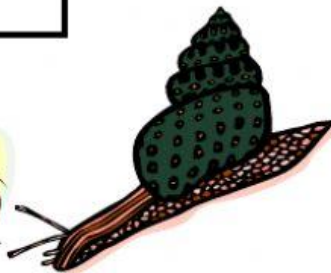
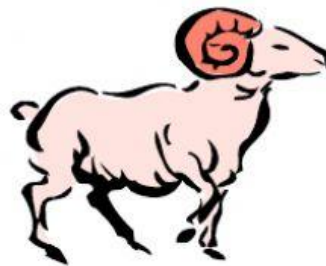
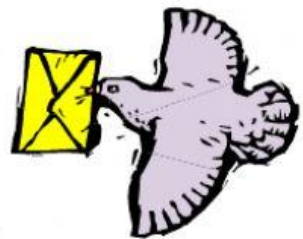
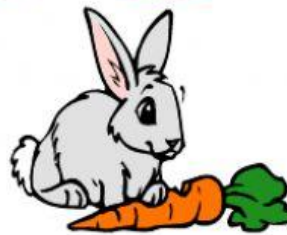
camp	A place where people live in tents or huts for a short time.
hangar	A place where aeroplanes are kept.
hostel	A place in boarding schools for pupils to stay.
parliament	A place where laws are discussed and made.
prison	A place where prisoners are locked up.
warehouse	A building where goods are stored.
abattoir	A place where animals are slaughtered.
apiary	A place where bees are kept.
aviary	A place where birds are kept.
barracks	A place where soldiers live.
cannery	A place where food is canned.
cemetery	A place where the dead are buried.
dairy	A place where milk is turned into butter and cheese.
dispensary	A place where medicine is given out.
dock	A place where ships are repaired or built
dormitory	A sleeping room in a boarding school or hostel.
gallery	A place where paintings and artworks are displayed
granary	A place where grain is stored

incinerator	A place where athletes do their exercises and practices
lighthouse	A tower to guide the ship
laundry	A place where clothes are washed and ironed.
mint	A place where coins are made.
orchard	A place where fruit trees are grown.
orphanage	A home for orphans
quay	A place where ships are loaded and unloaded.
reservoir	A place where water is collected and stored.
vineyard	A place where grape wines are grown.



HOMES OF ANIMALS

Animal	Home
bear	den
beaver	lodge
bee	hive
bird	nest
cow	byre
dog	kennel
pigeon	dovecote
eagle	eyrie
chicken	coop
hare	farm
horse	stable
lion	den, lair
mole	fortress
mouse	hole, nest
owl	barn, tree
pig	sty
tiger	den, lair
tame rabbit	hutch
wild rabbit	burrow, warren
sheep	pen
snail	shell
spider	web



EXERCISE 1 : UPSR MODEL
QUESTIONS (1 - 4)

1. Pn. Yati owns a.....She sells breads and cakes.
A. bakery B. aviary
C. garage D. apiary
2. The burglars were kept in the.....
A. coop B. cell
C. tent
3. Farhan sends his dirty clothes to the
A. dairy B. hangar
C. laundry
4. The pineapples were sent to the.....to be canned.
A. gallery B. cannery
C. granary D. cemetery

EXERCISE 2 : UPSR MODEL
QUESTIONS (1 - 4)

1. All the aeroplanes are kept and repaired in the
A. garage B. dock
C. airport D. hangar
2. The Eskimos live in an.....
A. igloo B. wigwam
C. hut
3. The.....has many fruits.
A. orchard B. factory
C. bakery
4. The cows were slaughtered in the.....
A. abattoir B dairy
C. bakery D. quarry



EXERCISE 3: Write the correct answer for the questions below

Tips : For word level, pupils can find the answer by searching for the key words.
Before you answer, find the key word in the sentences.

1. A place where birds are kept ()
2. A place where cows are kept ()
3. A house of a horse ()
4. A house of a dog ()
5. A house of a lion ()
6. A place where pigeons are kept ()
7. A house of a pig ()
8. A house of a sheep ()
9. A place where beaver is kept ()

den
pen
kennel
aviary
lodge
byre
stable
dovecote
sty

