

## UNIT 20: WHERE'S SAPA?

### I. VOCABULARY

#### 1. Fill in the blanks.

- a. no \_\_ th                      c. ne \_\_ r                      e. \_\_ ar  
b. c \_\_ ntral                      d. s \_\_ uth                      f. bea \_\_ iful

#### 2. Look at the pictures and write the places.



a. ....



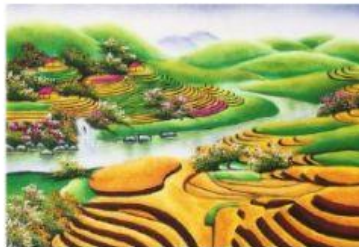
b. ....



c. ....



d. ....



e. ....



f. ....

#### 3. Circle the odd one out

- |            |          |             |            |
|------------|----------|-------------|------------|
| 1. a. near | b. far   | c. city     | d. from    |
| 2. a. is   | b. Hue   | c. Ha Noi   | d. Da Nang |
| 3. a. good | b. great | c. ok       | d. far     |
| 4. a. city | b. mouse | c. hometown | d. town    |
| 5. a. from | b. where | c. when     | d. who     |

### II. GRAMMAR

#### 1. Choose the correct answer.

1. Where is Ca Mau?                      - It's \_\_\_\_\_ central Vietnam.  
a. in                      b. on                      c. to
2. Is Hai Duong \_\_\_\_\_ Ho Chi Minh City  
a. in front of                      b. near                      c. on

3. Quyen: Is Nam Dinh near Ho Chi Minh City?

Kien: \_\_\_\_\_

- a. Yes, it is. It's far from Ho Chi Minh City.      b. No, it is. It's far from Ho Chi Minh City.  
c. No, it isn't. It's far from Ho Chi Minh City.

4. This is Da Nang. It's in \_\_\_\_\_

- a. north Viet Nam      b. central Vietnam      c. south Vietnam

5. Where \_\_\_\_\_ Can Tho?

- a. is      b. have      c. are

6. Thang Long Water Puppet Theatre is not \_\_\_\_\_ Huong pagoda.

- a. on      b. near      c. at

**2. Circle A, B or C to find the mistake in each sentence.**

1. What is Ha Long Bay?

A      B      C

2. This is a photo for Quang Tri.

A      B      C

3. Ho Chi Minh City is on south Viet Nam.

A B      C

4. Is Hai Duong and Hung Yen near Ha Noi?

A      B      C

5. Is Ha Giang far Hue?

A      B      C

**3. Choose the correct sentence A, B or C.**

1. A. My family is in Ha Noi.

B. My family is on Ha Noi.

C. My family is at Ha Noi.

2. A. Lai Chau is in north Viet Nam.

B. Lai Chau is in central Viet Nam.

C. Lai Chau is in south Viet Nam.

3. A. Where are Can Tho? - It's in south Vietnam.

B. Where's Can Tho? - It's in north Viet Nam.

C. Where's Can Tho? - It's in south Viet Nam.

4. A. Is your place near Ho Chi Minh City? - Yes, it isn't.

B. Is your place near Ho Chi Minh City? - Yes, it is.

C. Is your place near Ho Chi Minh City? - No, it is.