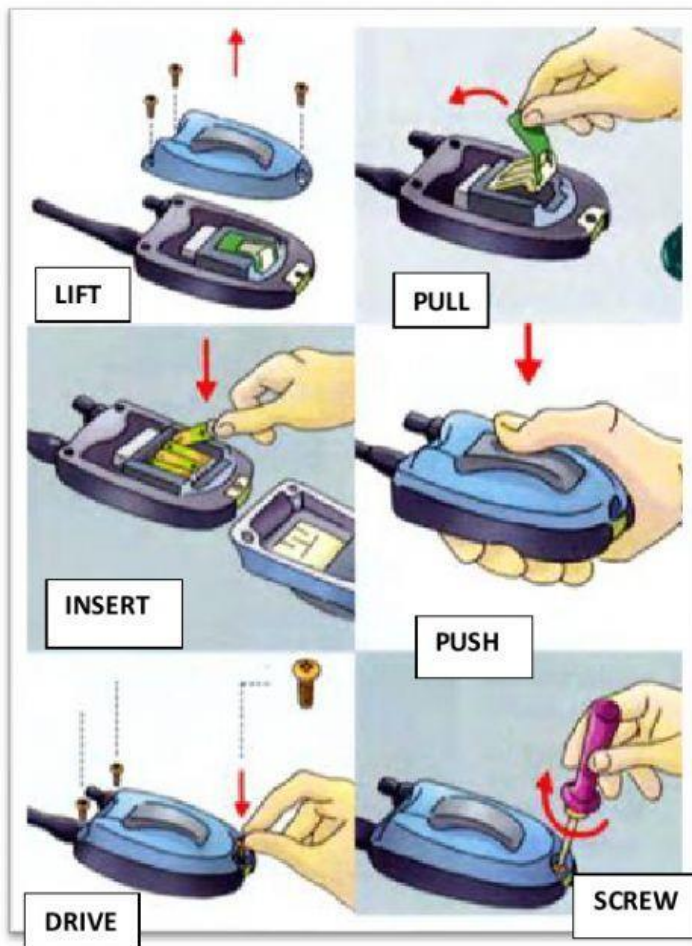


# Basic Actions



## Trucker's Transmit CB Radio Owner's Manual

### Changing the batteries on your Trucker's Transmit CB Radio.

- 1 **Grip** radio firmly in one hand.
- 2 **Unscrew** the screws from battery cover with a flathead screwdriver.
- 3 **Lift** battery cover and **pull** green tab to **remove** old batteries.
- 4 **Flip** battery cover over to see battery diagram.
- 5 Remove old batteries and **insert** new ones as shown on diagram.
- 6 Replace battery cover. **Push** cover closed.
- 7 **Drive** screws back into battery cover.
- 8 **Screw** in with screwdriver and **twist** until tight.
- 9 To avoid **stripping** the screws, do not over tighten.

Turn on radio to test batteries.

*Read the manual and choose the correct answer*

**1. What is the purpose of the manual page?**

- A. To describe how the radio works
- B. To explain how to change the batteries
- C. To compare types of CB radios
- D. To provide radio repair instructions

**2. What instruction is NOT given?**

- A. Flip the battery cover over
- B. Drive the screw into the battery cover
- C. Twist screws until tight
- D. Drive in the battery cover

**3. Which item will not be removed from the radio?**

- A. Green tab
- B. Battery cover
- C. Dead batteries
- D. Screws in cover

**Write a Word that is similar in meaning to the underlined part. Choose the words from the manual page**

1. The instructions are on the other side. Turn the paper over.
2. Put the drill bit into the chuck
3. Turn the light bulb clockwise until secure
4. Push upward on the table so I can put this mat underneath it

**FILL IN THE BLANKS WITH THE CORRECT WORDS**

**PUSH**

**DRIVE**

**PULL**






**REMOVE**

**TURN**

**GRIP**

- 1 \_\_\_\_\_ the knob clockwise to close the valve
- 2 \_\_\_\_\_ the handle toward yourself to open the door
- 3 \_\_\_\_\_ the trunk down so it closes
- 4 She used a hammer to \_\_\_\_\_ the nail
- 5 To install a new bulb, you must \_\_\_\_\_ the old one
- 6 \_\_\_\_\_ the handle firmly to avoid slippage

**LISTEN TO A CONVERSATION BETWEEN A MECHANIC AND A CUSTOMER. SELECT THE ACTIONS THAT ARE REQUIRED**

1. Locate the light bulb holder 
2. Push the metal tab 
3. Lift the hood 
4. Cut the three wires 
5. Unscrew the old bulb 
6. Remove the wire housing 