

**Exercise 1. [IELTS Listening: Short answer questions]** Read the information. Then listen to three short recordings about a bank and answer the questions. Write **NO MORE THAN TWO WORDS** for each answer.

- 1 Where was the bank previously located? \_\_\_\_\_
- 2 What is the newest available product mentioned? \_\_\_\_\_
- 3 What is only available to existing customers? \_\_\_\_\_

**Exercise 2. [IELTS Listening: Short answer questions]** Answer the questions below. Write **NO MORE THAN TWO WORDS AND/OR A NUMBER** for each answer.

1. Which other animals did the researchers study? \_\_\_\_\_
2. What term is used to categorize Dr Gray's study? \_\_\_\_\_
3. What was the approximate height above sea level of the area studied? \_\_\_\_\_
4. Which part of the animal's body makes the clearest marks in the snow? \_\_\_\_\_
5. What is a good place to look for hare droppings? \_\_\_\_\_
6. What was put inside traps to attract the hares? \_\_\_\_\_
7. What is the maximum distance for identifying individual animals with a telescope? \_\_\_\_\_
8. What was the best shift for seeing hares in breeding season? \_\_\_\_\_

**Exercise 3.** [IELTS Listening: Short answer questions] You will hear an extract from a talk given to a group who are going to stay in the UK. Answer the questions below. Write **NO MORE THAN THREE WORDS AND/OR A NUMBER** for each answer.

What TWO factors can make social contact in a foreign country difficult?

- 11 .....
- 12 .....

Which types of community group does the speaker give examples of?

- theatre
- 13 .....
- 14 .....

In which TWO places can information about community activities be found?

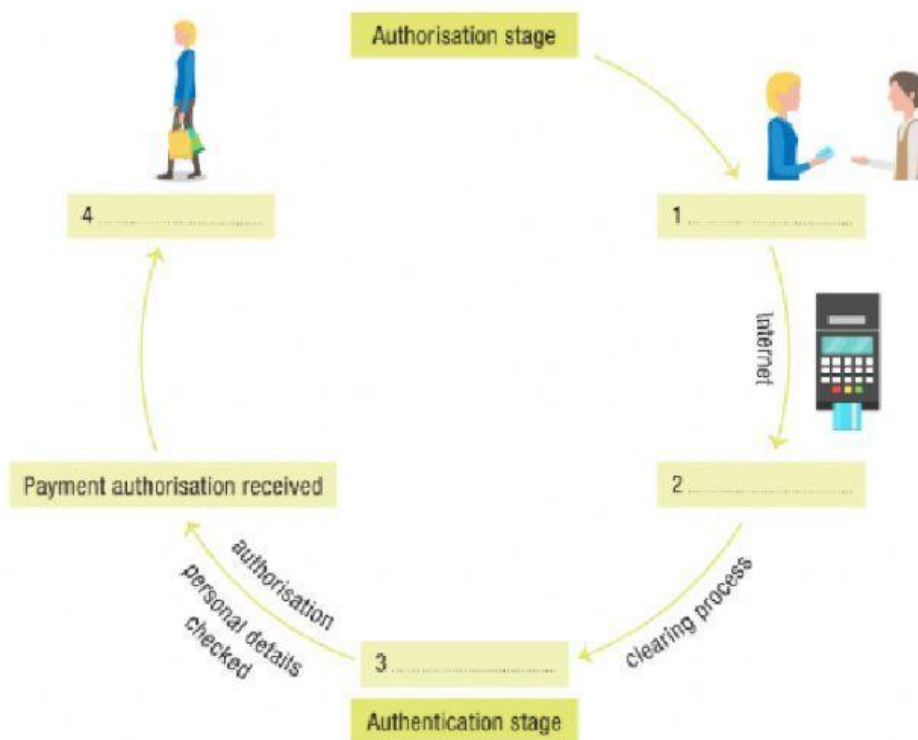
- 15 .....
- 16 .....

**Exercise 4.** [IELTS Listening: Short answer questions] Answer the questions below. Write **NO MORE THAN THREE WORDS AND/OR A NUMBER** for each answer.

1. How long has Sport Aid existed for? \_\_\_\_\_
2. Who does Sport Aid mainly benefit? \_\_\_\_\_
3. What did the money provide for one village? \_\_\_\_\_
4. What is thought to be an important part of development? \_\_\_\_\_
5. Where is the main event taking place? \_\_\_\_\_
6. What are you advised to wear to the event? \_\_\_\_\_

**Exercise 5.** [IELTS Listening: Short answer questions – Diagram labeling]

(1) Listen and complete the diagram. Write the correct letters, A–F, for answers 1–4.



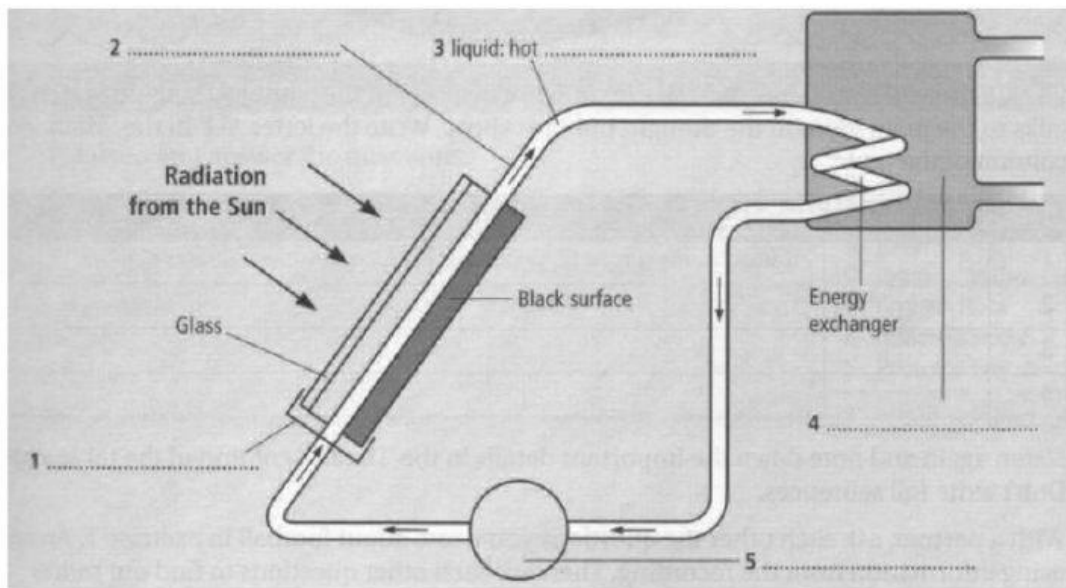
- |        |                       |
|--------|-----------------------|
| 1 ____ | A receipt             |
| 2 ____ | B retailer's bank     |
| 3 ____ | C telephone line      |
| 4 ____ | D retailer            |
|        | E issuing bank        |
|        | F credit card network |

(2) Listen and answer questions 5–7. Write **NO MORE THAN TWO WORDS** for each answer.

- 5 How should you behave if you receive an unexpected phone call? \_\_\_\_\_
- 6 What should you do if you are not sure about a caller? \_\_\_\_\_
- 7 What can you use to protect your electronic devices? \_\_\_\_\_

**Exercise 6.** [IELTS Listening: Diagram-labeling tasks] Look at the diagram of a solar heating system and see what parts you will need to label.

Listen to a talk about solar energy and complete the labels as you listen.



Write **NO MORE THAN THREE WORDS** for each answer.

1 \_\_\_\_\_

2 \_\_\_\_\_

3 \_\_\_\_\_

4 \_\_\_\_\_

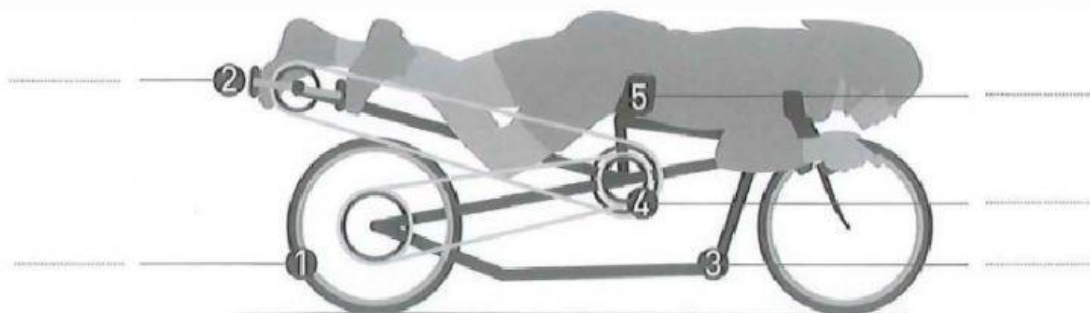
5 \_\_\_\_\_

**Exercise 7. [IELTS Listening: Diagram-labeling tasks]**

Questions 1–5

Label the diagram of the bike below.

Choose **FIVE** answers from the box and write the correct letter, **A–H**, next to each one.



- A soft material gives extra comfort
- B uses a standard design
- C special shape reduces weight
- D made from old kitchen equipment
- E relatively narrow
- F allows rider to change position
- G exceptionally light
- H recycled from old bikes