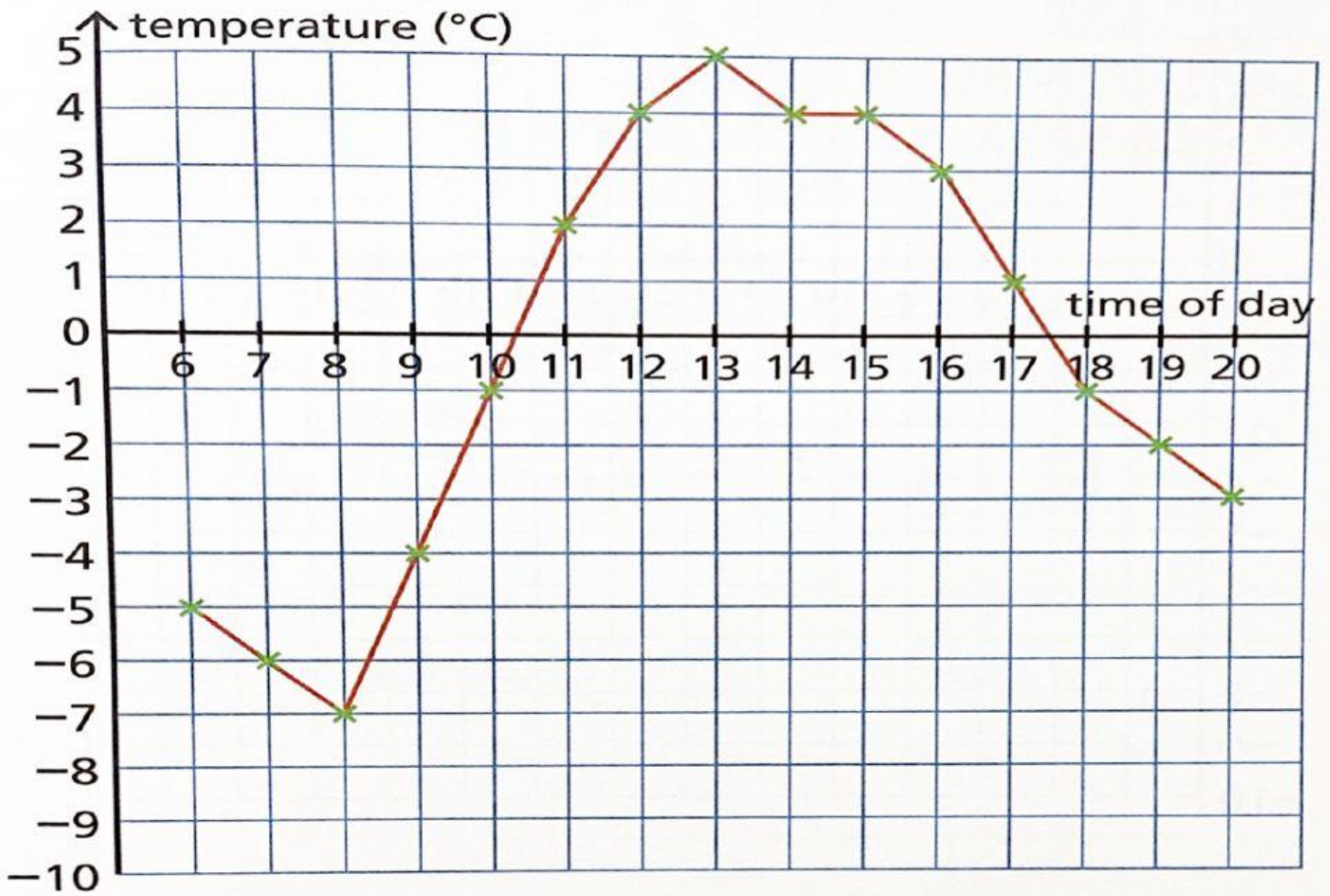


2. Study the line graph and work out.

Temperatures at 6:00–20:00.



1. What time was the coldest? _____

2. What time was the warmest? _____

3. What were the temperatures at 9:00 _____

4. What were the temperatures at 18:00 _____

5. Between which hours did the temperature rise above zero _____

6. Between which hours did the temperature drop above zero again _____

7. At which two times was the temperature -1°C _____