

JUMANJI

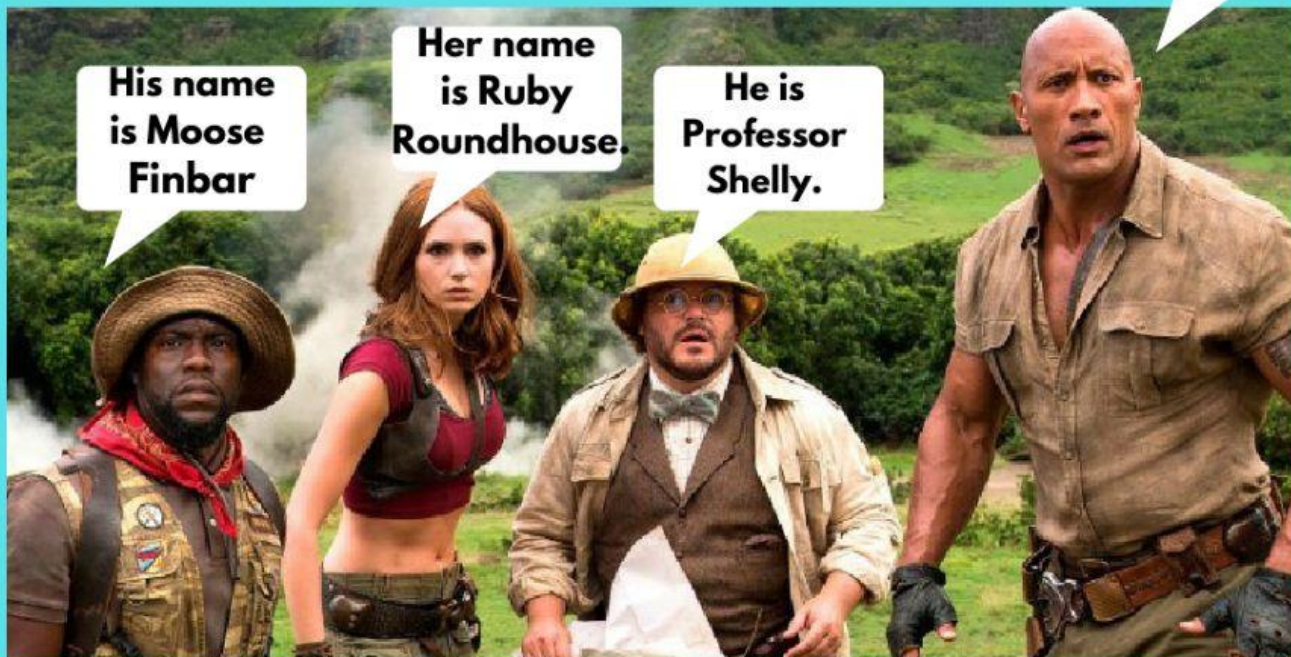
meet the players

He is Smolder Bravestone.

His name is Moose Finbar

Her name is Ruby Roundhouse.

He is Professor Shelly.



1) Associe os personagens acima com suas respectivas descrições físicas a seguir.

- A) This character has a short red hair and uses a red top.
- B) This character is short and wears a red bandana on his neck.
- C) This character is bald and he is the tallest of his group.
- D) This character wears a bow-tie and small glasses.



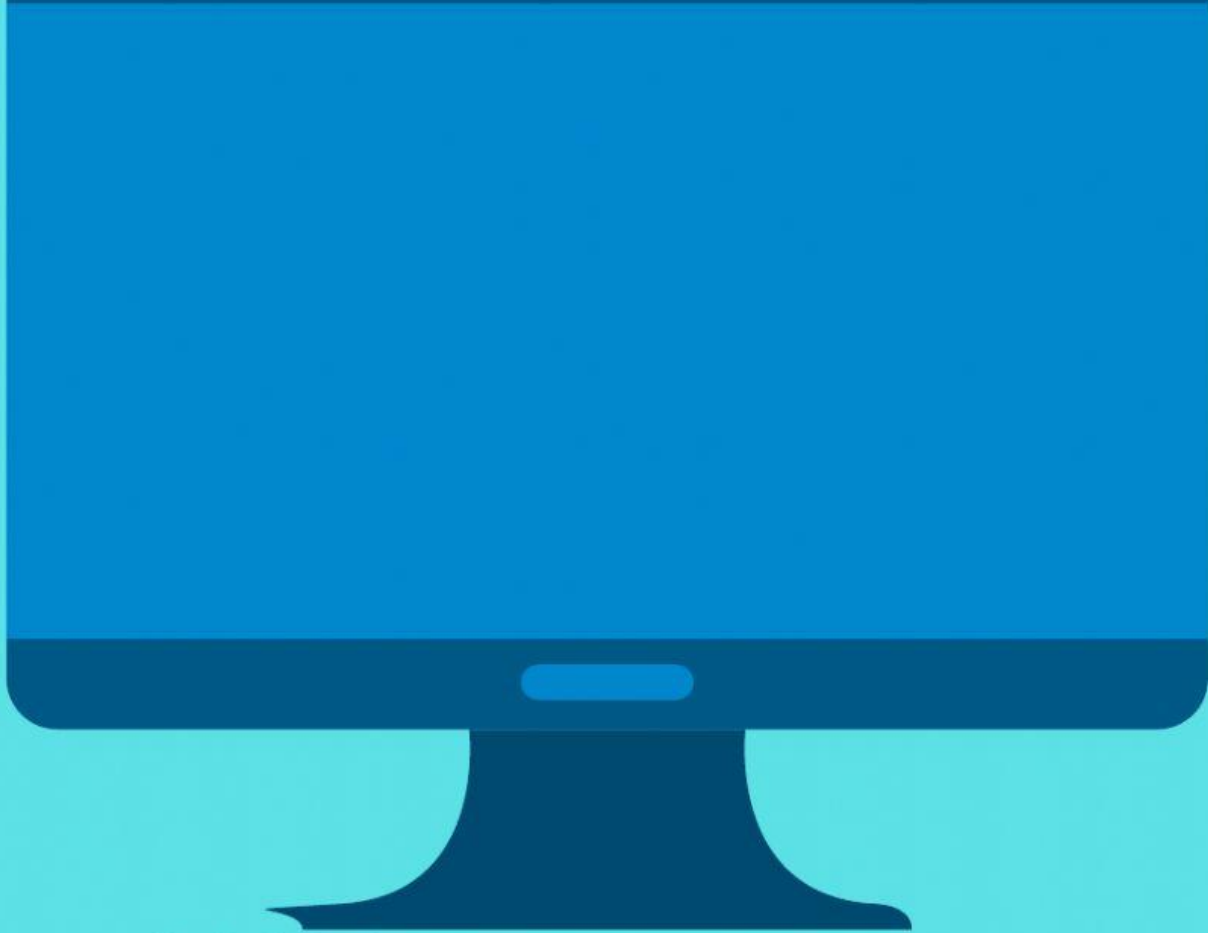
Julgue os itens em T(true) ou F(false)

1. Dwayne Johnson is Smolder Bravestone in the film.
2. There are two girls in the group.
3. Jack Black is Prof. Shelly in the film.
4. Bravestone is the weakest of the group.

ATENÇÃO: O exercício continua na próxima página.



Assista ao vídeo e responda às perguntas



Associe as habilidades aos respectivos personagens:

This character cannot eat cake.

This character can do dance fighting.

This character cannot endure.

This character can climb.

This character cannot inject venom.

This character can identify fossils.

This character can carry a lot of weapons in the backpack.

This character has no weaknesses.

This character can do karate.