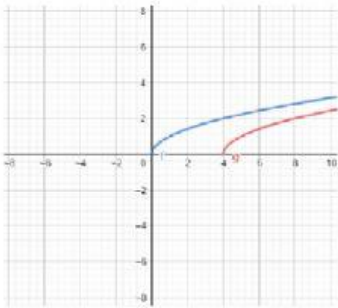


Example 2 Graph Translations

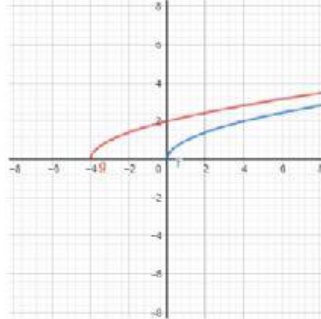
Name in English

1. Use the graph of the function $f(x) = \sqrt{x}$ to graph the function $g(x) = \sqrt{x-4}$.

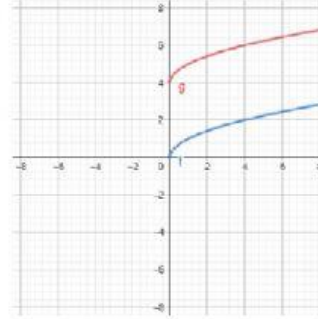
a) .



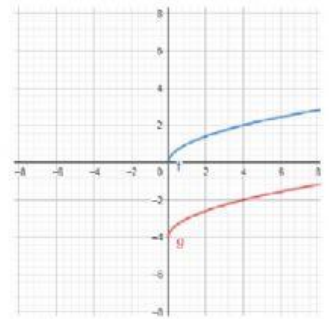
b) .



c) .

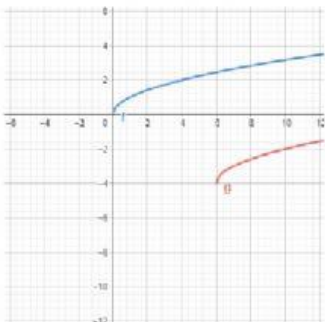


d) .

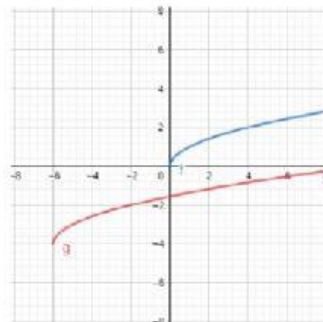


2. Use the graph of the function $f(x) = \sqrt{x}$ to graph the function $g(x) = \sqrt{x+6} - 4$.

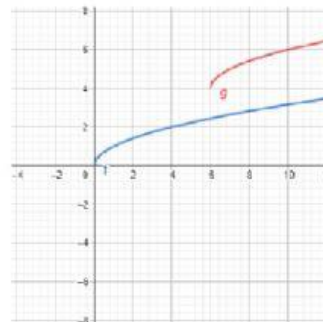
a) .



b) .

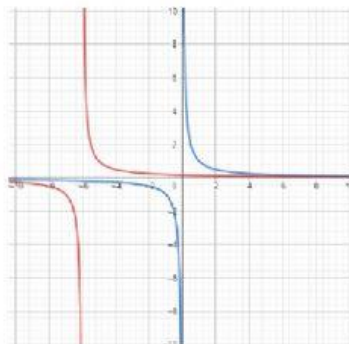


c) .

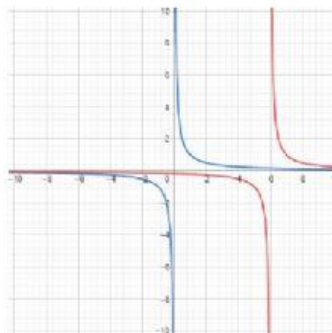


3. Use the graph of the function $f(x) = \frac{1}{x}$ to graph the function $g(x) = \frac{1}{x} - 6$.

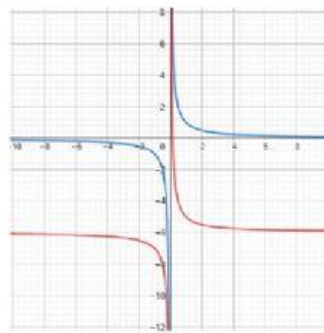
a) .



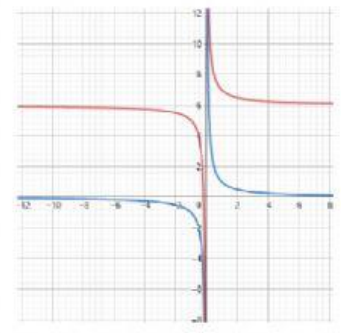
b) .



c) .

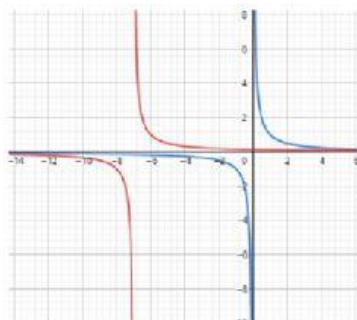


d) .

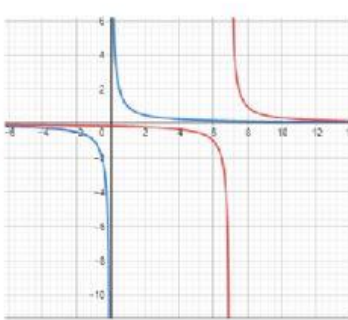


4. Use the graph of the function $f(x) = \frac{1}{x}$ to graph the function $g(x) = \frac{1}{x+7} - 4$.

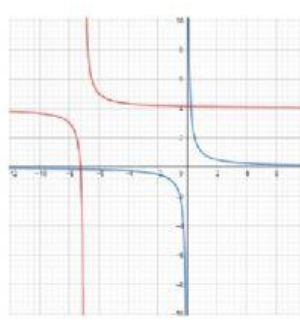
a) .



b) .



c) .



d) .

