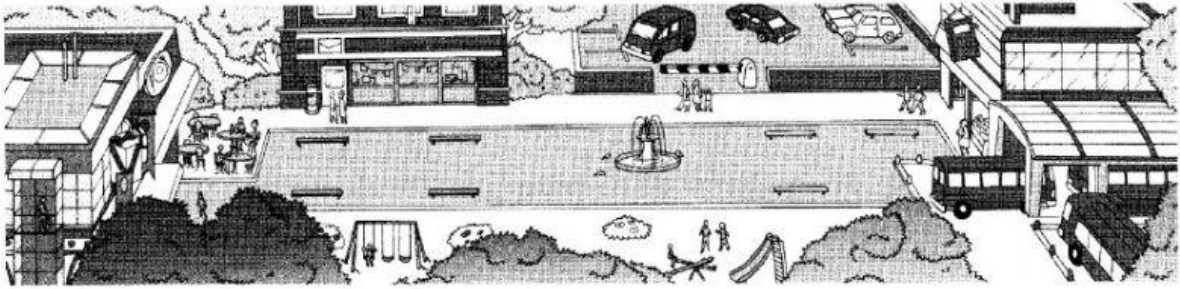


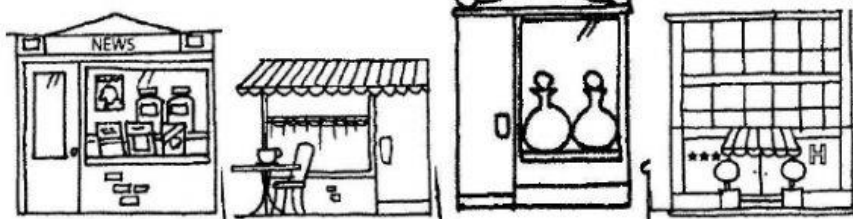
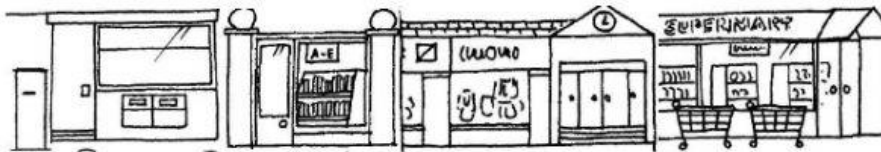
1. Read and match.



- 1 It's next to the restaurant and opposite the bus station.
- 2 It's next to the car park and opposite the park.
- 3 It's opposite the library and next to the shopping centre.
- 4 It's next to the car park and opposite the restaurant.
- 5 It's opposite the shopping centre and next to the library.
- 6 It's next to the library and opposite the park.

library
bus station
shopping centre
restaurant
car park
post office

2. Look and answer the questions.



1. Where's the café? The café is between the newsagent's and the museum
2. Where's the newsagent's? _____
3. Where's the hotel? _____
4. Where's the library? _____
5. Where's the supermarket? _____